

**ENVIRONMENTAL COMPLIANCE & AREA COMPLETION PROJECTS (EC&ACP) STANDARD
OPERATING PROCEDURES, VOL. I**
Manual: C3
Procedure: ER-IDS-019-022
Revision: 4
Effective Date: 09/09/2021
Type-Class: Checklist
Page: 1 of 5
**M-AREA HAZARDOUS WASTE MANAGEMENT FACILITY (BLDG. 904-51G) FIELD INSPECTION
CHECKLIST**
WORKING COPY

This document is a Working Copy. Prior to start of work, verify this is the latest revision per the Procedure Index.

Charles P. Carter

Verified By

02/15/2023

Date

CAUTION

The Inspector will IMMEDIATELY notify the Post-Closure Manager and Environmental Compliance Authority if there has been a breach or compromise of the institutional controls of this waste unit. This notification will be in accordance with Savannah River Site post-closure inspection procedures.

NOTE

1. Manual C3, Volume. 1, Procedure ER-SOP-019, Waste Unit and IOU Inspection and Maintenance, is required to be used as a reference for inspection details.
2. Monitoring wells associated with this waste unit are maintained in accordance with Environmental Compliance and Area Completion Projects (EC&ACP) monitoring well procedures.
3. Steps in this checklist may be completed concurrently or in any order.
4. Unsatisfactory conditions found during the inspection may be listed on the detailed map of the inspected area.

SCHEDULED

UNSCHEDULED

A = Satisfactory	A or X	Observation/Corrective Action Taken
X = Unsatisfactory (Explanation required)		
1. VERIFY roads to waste unit are accessible.	A	

M-Area Hazardous Waste Management Facility (Bldg. 904-51G) Field Inspection Checklist

Manual: C3
 Procedure: ER-IDS-019-022
 Revision: 4
 Page: 2 of 5

SCHEDULED

UNSCHEDULED

A = Satisfactory X = Unsatisfactory (Explanation required)		A or X	Observation/Corrective Action Taken
2.	VERIFY fence, posts, and gates that surround M-Area Settling Basin are intact, in good condition, and unattended gates are locked.	A	
3.	VERIFY M-Area Settling Basin signs (10) and postings are in acceptable condition, have correct information, and are legible from a distance of 25 feet.	A	
4.	CHECK integrity of drainage ditches, drainpipes, and general area (including the drainage ditch to Lost Lake) for presence of excessive erosion, vegetation, standing water, sediment buildups, or any debris restricting water flow.	A	
5.	CHECK the soil cover for signs of erosion, abnormal soil cracks, depressions (subsidence), or physical impacts.	A	
6.	VISUALLY CHECK vegetative cover of M-Area Settling Basin for grass density, with no bare spots more than 3 feet by 3 feet in area and large weeds or woody vegetation on capped area. (The height of the vegetative cover should not impair the visual inspection of the soil cover. This will be determined by the Inspector.)	A	
7.	CHECK for excessive vegetation growing over fences which may obstruct warning signs or visibility of inspected area.	A	
8.	CHECK M-Settling Basin cover for signs of burrowing animals.	X	Four small and shallow Armadillo holes on Basin Cover See Map Note:1 Reference Maintenance Register: PC-2023-00015
9.	CHECK side slopes for slumping and any observable signs of subsidence/depressions.	A	
10.	VERIFY annual Topographic/Subsidence Survey has been completed for current calendar year.	A	Completed 04/20/2022

M-Area Hazardous Waste Management Facility (Bldg. 904-51G) Field Inspection Checklist

Manual: C3
 Procedure: ER-IDS-019-022
 Revision: 4
 Page: 3 of 5

SCHEDULED UNSCHEDULED

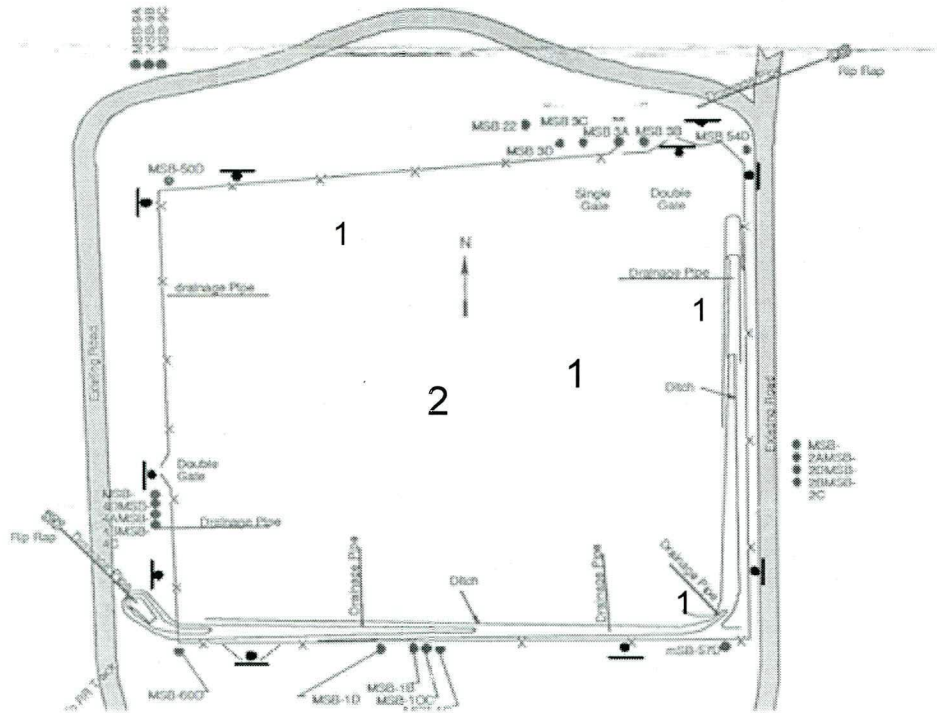
A = Satisfactory X = Unsatisfactory (Explanation required)		A or X	Observation/Corrective Action Taken
11.	VERIFY copies of survey results are in EC&ACP Document Control Center.	A	SRNS-J2000-2022-00343
12.	CHECK around Lost Lake for evidence of any unauthorized activity in immediate area.	A	
13.	ENSURE benchmark is visible and not damaged.	A	
14.	Other Active Fire Ant Mounds	X	Active Fire Ant Mounds on Soil Cover. See Map Note: 2 Reference Maintenance Register PC-2023-00016

Inspected by		
Charles P. Carter <i>(Print Name)</i>	<i>Charles P. Carter</i> <i>(Signature)</i>	02/15/2023 <i>(Date)</i>

Reviewed by Post-Closure Manager		
Brian Hanshew <i>(Print Name)</i>	<i>BHanshew</i> <i>(Signature)</i>	2/21/2023 <i>(Date)</i>

Map of M-Area Hazardous Waste Management Facility 904-51G

Coordinates - N5-W7

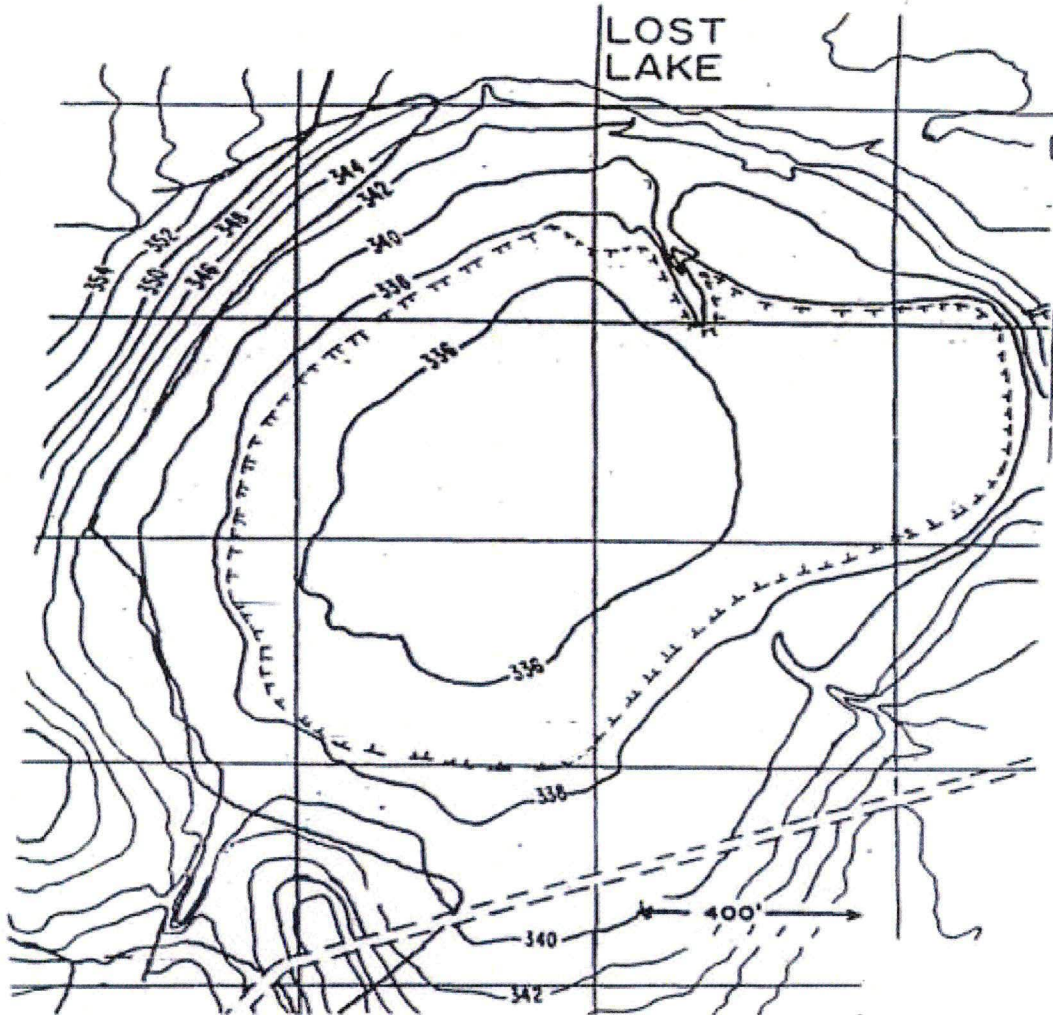


• Waste Unit Signs
- - - Access Gate

NOTES: 1=Four small and shallow Armadillo holes on Basin Cover. Post Closure Maintenance filled hole with topsoil.
2=Active Ant Mounds on soil cover. Applied 1.0 lb. of Extinguish Ant Bait.

NO FURTHER ENTRIES

Map of M-Area Hazardous Waste Management Facility (Lost Lake)



NOTES:

NO ENTRIES THIS PAGE

POST CLOSURE MAINTENANCE REGISTER

Index Number

Unit Name

13 M-AREA HAZARDOUS WASTE MANAGEMENT FACILITY (M-AREA SETTLING BASIN - 904-51G)

Watershed UPPER THREE RUNS

AHA # AHA-ER-5534
Work Order # NA
Work Group POST CLOSURE MAINTENANCE
Priority Medium
RCRA YES

Maintenance Number	PC-2023-00015	Maintenance Status	Complete
Inspection Date	2/15/2023	Chemical Type	NA
Completion Date	2/15/2023	Chemical Name	
		Amount Used	

Description Of Maintenance Item

Four small and shallow Armadillo holes on Basin Cover

Maintenance Item Corrected

Post Closure Maintenance filled the shallow holes with top soil.

Notes ER-IDS-019-022

Approved by : Brian Hanshew - ACP Post Closure Manager

Signature



Approval date : 2/21/23

POST CLOSURE MAINTENANCE REGISTER

Index Number

Unit Name

13 M-AREA HAZARDOUS WASTE MANAGEMENT FACILITY (M-AREA SETTLING BASIN - 904-51G)

Watershed UPPER THREE RUNS

AHA # AHA-ER-5534
Work Order # NA
Work Group POST CLOSURE MAINTENANCE
Priority Medium
RCRA YES

Maintenance Number	PC-2023-00016	Maintenance Status	Complete
Inspection Date	2/15/2023	Chemical Type	NA
Completion Date	2/15/2023	Chemical Name	Extinguish
		Amount Used	1.0 Pound

Description Of Maintenance Item

Active ant mounds on soil cover

Maintenance Item Corrected

Applied Extinguish ant bait.

Notes ER-IDS-019-022

Approved by : Brian Hanshew - ACP Post Closure Manager

Signature



Approval date :

2/21/2023