

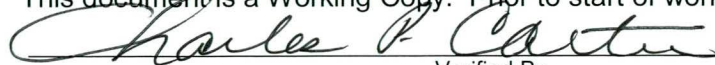
108483

**ENVIRONMENTAL COMPLIANCE & AREA COMPLETION PROJECTS (EC&ACP) STANDARD  
OPERATING PROCEDURES, VOL. I**

 Manual: C3  
 Procedure: ER-IDS-019-077  
 Revision: 0  
 Effective Date: 07/19/2017  
 Type-Class: Form  
 Page: 1 of 3

**D-AREA ASH BASIN (488-2D) AND ASH LANDFILL (488-4D) INTERIM FIELD INSPECTION  
CHECKLIST**
**WORKING COPY**

This document is a Working Copy. Prior to start of work, verify this is the latest revision per the Procedure Index.



Verified By

11-6-17

Date

**CAUTION**

The Inspector shall IMMEDIATELY notify the Post-Closure Manager and Environmental Compliance Authority if there has been a breach or compromise of the institutional controls of this waste unit. This notification shall be in accordance with Savannah River Site post closure inspection procedures.

**NOTE**

1. Manual C3, Vol. I, ER-SOP-019, Waste Unit Inspection and Maintenance, shall be referred to for inspection details.
2. Steps in this checklist may be completed concurrently or in any order.
3. Interim Inspection Frequency Requirements are defined in the SRNS-RP-2014-00459, Removal Action Design Plan for the 488-4D Ash Landfill and 488-2D Ash Basin, Section 3.8, Quality Assurance.


**SCHEDULED**

**UNSCHEDULED**

A = Satisfactory X = Unsatisfactory (Explanation required)		A or X	Observation/Corrective Action Taken
1.	Verify roads are accessible.	A	
2.	Verify there are no excavations, digging, or construction activities (excluding irrigation) on the D-Area Basin (488-2D) and Ash Landfill (488-4D) cover system.	A	
3.	Verify the integrity of drainage systems and required land grading for proper drainage is maintained and they are free of excessive erosion, sediment buildup, and any debris restricting water flow.	X	DEBRIS ON DRAINAGE GRATES. SEE MAP NOTE D. REF. MAINT. Register PC-2017-00092

Manual: C3  
 Procedure: ER-IDS-019-077  
 Revision: 0  
 Page: 2 of 3

D-Area Ash Basin (488-2D) and Ash Landfill (488-4D) Interim Field Inspection Checklist

SCHEDULED

UNSCHEDULED

A = Satisfactory		A or X	Observation/Corrective Action Taken
X = Unsatisfactory (Explanation required)			
4.	Verify no woody vegetation is growing on the D-Area Ash Basin (488-2D) and Ash Landfill (488-4D) cover system.	X	SEVERAL SMALL WOODY PLANTS ARE GROWING ON SOIL COVER AND IN DRAINAGE DITCHES. SEE MAP NOTE (2). REF. MAINT. Register PC-2017-00093
5.	Verify grass density of the vegetation cover has no bare spots more than 3 feet by 3 feet in area. The height of the vegetative cover should not impair the visual inspection of the soil cover. This verification will be determined by the inspector.	A	
6.	Verify the soil cover at D-Area Ash Basin (488-2D) and Ash Landfill (488-4D) has no signs of unacceptable erosion or depressions (subsidence).	X	SPOTS OF EROSION NOTICED ON THE SIDE SLOPES OF 488-4D. SEE MAP NOTE (3). REF. MAINT. Register PC-2017-00094
7.	Verify signs of burrowing animals on the D-Area Ash Basin (488-2D) and Ash Landfill (488-4D) are not present.	X	ACTIVE ANT MOUNDS ON SOIL COVER. SEE MAP NOTE (3) REF. MAINT Register PC-2017-00095
8.	Other		
NO FURTHER ENTRIES			CPC 11-6-17

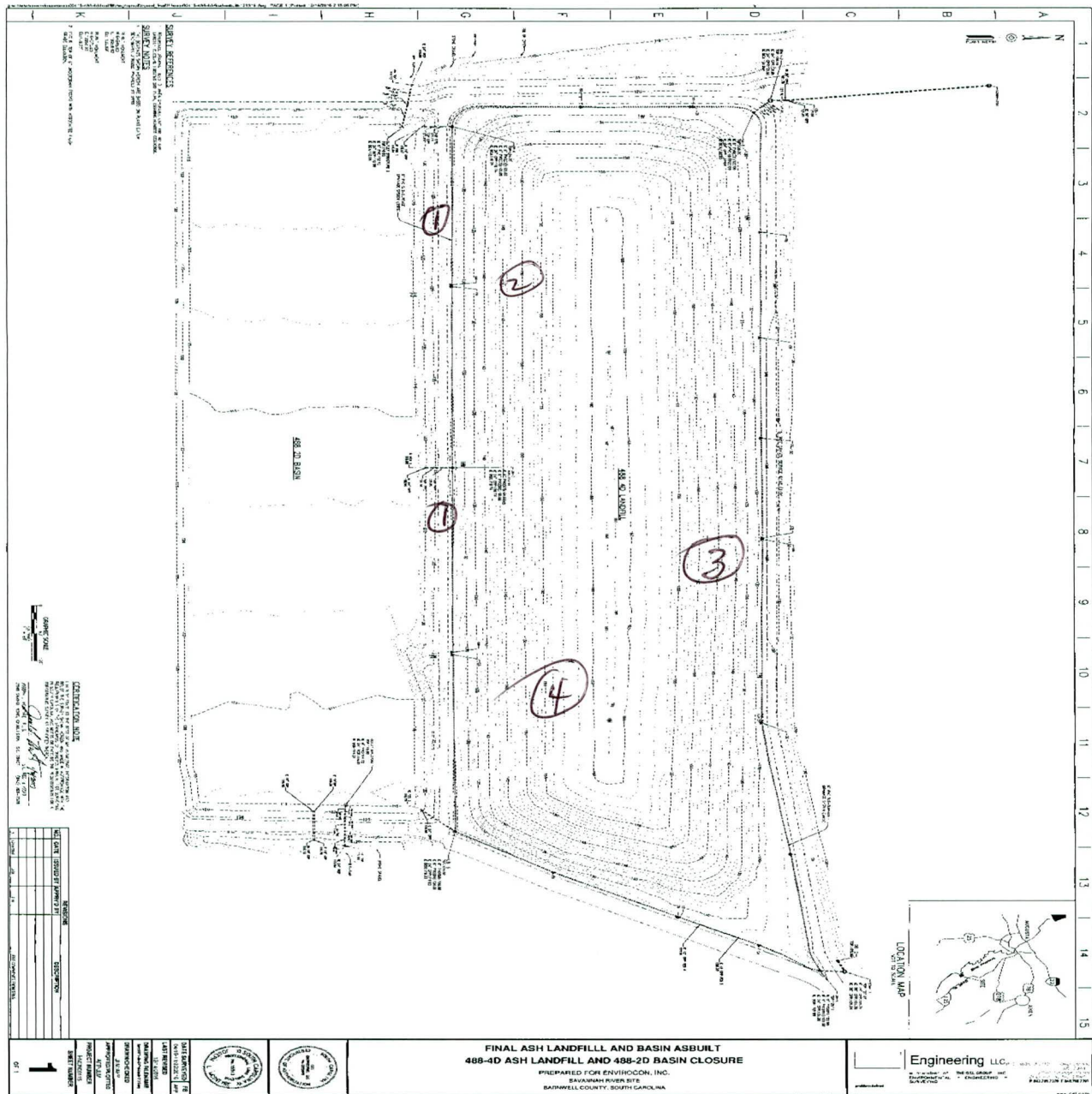
Inspected By		
Charles P. Carter	Charles P. Carter	11-6-17
Print Name	Signature	Date

Reviewed By Post Closure Manager		
George W. Joyner	[Signature]	12/20/17
Print Name	Signature	Date

D-Area Ash Basin (488-2D) and Ash Landfill (488-4D) Interim  
Field Inspection Checklist

Manual: C3  
Procedure: ER-IDS-019-077  
Revision: 0  
Page: 3 of 3

D-Area Ash Basin (488-2D) and Ash Landfill (488-4D) Map



NOTES: ① = DEBRIS ON DRAINAGE GRATES. GRATES CLEANED ON THE SPOT.

② = SEVERAL SMALL WOODY PLANTS ARE GROWING ON SOIL COVER AND IN DRAINAGE DITCHES. USES WILL REMOVE ③ SPOTS OF EROSION NOTICED ON THE SIDE SLOPES OF 488-4D. USES WILL MAKE REPAIRS. ④ = ACTIVE ANT MOUNDS ON SOIL COVER. Applied 2.0 lbs of EXTINGUISH ANT BAIT.

CPL 11-6-17



# POST CLOSURE MAINTENANCE REGISTER

**Index Number**
**Unit Name**

272 D-AREA ASH BASIN (488-2D)  
548 D-AREA ASH LANDFILL (488-4D)

**Watershed** UPPER THREE RUNS

AHA # NA  
Work Order # N/A  
Work Group POST CLOSURE MAINTENANCE  
Priority Medium  
RCRA NO

**Maintenance Number** PC-2017-00095      **Maintenance Status** Complete  
Inspection Date 11/6/2017      **Chemical Type** NA  
Completion Date 11/6/2017      **Chemical Name** Extinguish  
**Amount Used** 2      **Pounds**

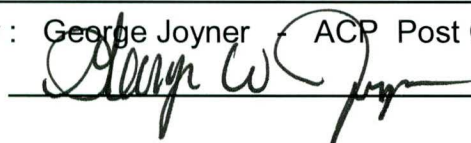
**Description Of Maintenance Item**  
Active ant mounds on soil cover

**Maintenance Item Corrected**  
Applied Extinguish pesticide

**Notes** New observation

Approved by : George Joyner ACP Post Closure Manager

Signature



Approval date :

12/20/17

# POST CLOSURE MAINTENANCE REGISTER

**Index Number****Unit Name**

272 D-AREA ASH BASIN (488-2D)

548 D-AREA ASH LANDFILL (488-4D)

**Watershed** UPPER THREE RUNS

AHA # NA  
Work Order # N/A  
Work Group USFS  
Priority Medium  
RCRA NO

**Maintenance Number** PC-2017-00094

Maintenance Status Complete

Inspection Date 11/6/2017

Chemical Type NA

Completion Date 12/19/2019

Chemical Name  
Amount Used**Description Of Maintenance Item**

Areas of erosion noticed on the side slopes.

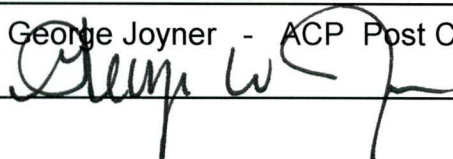
**Maintenance Item Corrected**

USFS repaired areas with topsoil, grass seed and straw

**Notes** New observation

Approved by : George Joyner - ACP Post Closure Manager

Signature



Approval date :

12/30/19