

**ENVIRONMENTAL COMPLIANCE & AREA COMPLETION PROJECTS (EC&ACP) STANDARD
OPERATING PROCEDURES, VOL. I**
Manual: C3
Procedure: ER-IDS-019-034
Revision: 3
Effective Date: 06/01/2016
Type-Class: Form
Page: 1 of 3
HEAVY WATER EQUIPMENT WASH BASIN FIELD INSPECTION CHECKLIST
WORKING COPY

This document is a Working Copy. Prior to start of work, verify this is the latest revision per the Procedure Index.

Charles P. Carter _____ 10/13/2020 _____
 Verified By Date

CAUTION

The Inspector shall IMMEDIATELY notify the Post-Closure Manager and Environmental Compliance Authority if there has been a breach or compromise of the institutional controls of this waste unit. This notification shall be in accordance with Savannah River Site post-closure inspection procedures.

NOTE

1. Manual C3, ER-SOP-019, *Waste Unit Inspection and Maintenance*, shall be referred to for inspection details.
2. Steps in this checklist may be completed concurrently or in any order.

 SCHEDULED
 UNSCHEDULED

| A = Satisfactory | | A or X | Observation/Corrective Action Taken |
|---|--|--------|-------------------------------------|
| X = Unsatisfactory (Explanation required) | | | |
| 1. | Verify roads are accessible to closed site. | A | |
| 2. | Verify waste unit signs (4) are in acceptable condition, have correct information, and are legible from a distance of 25 feet. | A | |

Heavy Water Equipment Wash Basin Field Inspection Checklist

Manual: C3
 Procedure: ER-IDS-019-034
 Revision: 3
 Page: 2 of 3

 SCHEDULED

 UNSCHEDULED

| A = Satisfactory X = Unsatisfactory (Explanation required) | | A or X | Observation/Corrective Action Taken |
|---|---|---------------------------|-------------------------------------|
| 3. | Verify monuments are in acceptable condition. | A | |
| 4. | Other | NO FURTHER ENTRIES | |

CPC 10/13/2020

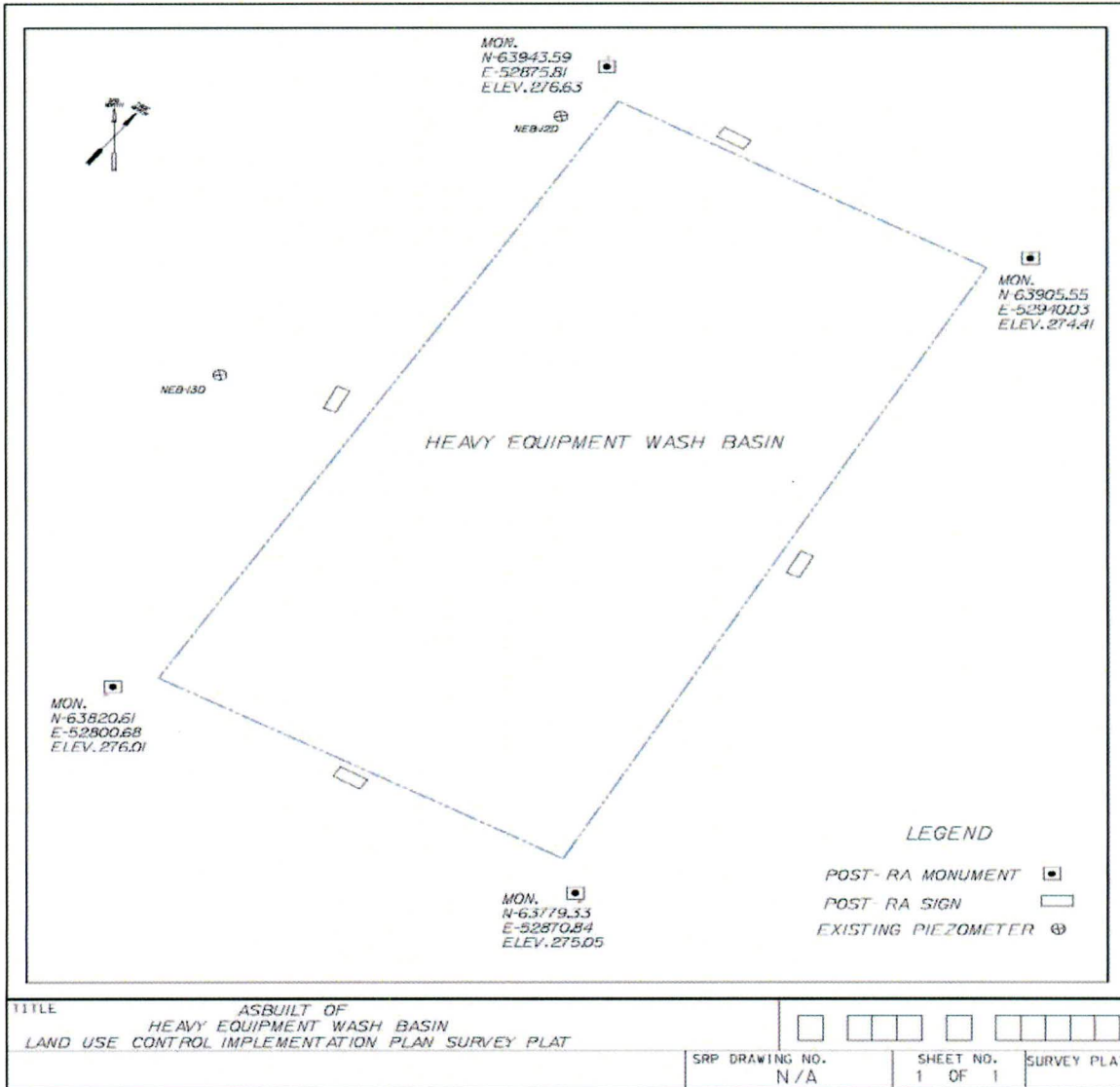
| Inspected By | | |
|-----------------------------------|---|----------------------|
| Charles P. Carter (Print Name) | <i>Charles P. Carter</i> (Signature) | 10/13/2020 (Date) |

| Review By Post-Closure Manager | | |
|----------------------------------|--|--------------------|
| George W. Joyner (Print Name) | <i>George W. Joyner</i> (Signature) | 10/14/20 (Date) |

Heavy Water Equipment Wash Basin Field Inspection Checklist

Manual: C3
Procedure: ER-IDS-019-034
Revision: 3
Page: 3 of 3

As-Built of Heavy Equipment Wash Basin Land Use Control Implementation Plan Survey Plat



NOTES: _____

NO ENTRIES THIS PAGE