

**ENVIRONMENTAL COMPLIANCE & AREA COMPLETION PROJECTS (EC&ACP) STANDARD
OPERATING PROCEDURES, VOL. I**
Manual: C3
Procedure: ER-IDS-019-062
Revision: 2
Effective Date: 06/01/2016
Type-Class: Form
Page: 1 of 3
CHEMICAL, METAL, AND PESTICIDE PITS (CMPP) FIELD INSPECTION CHECKLIST
WORKING COPY

This document is a Working Copy. Prior to start of work, verify this is the latest revision per the Procedure Index.

Charles P. Carter
 Verified By

5-29-18
 Date

CAUTION

The Inspector shall IMMEDIATELY notify the Post-Closure Manager and Environmental Compliance Authority if there has been a breach or compromise of the institutional controls of this waste unit. This notification shall be in accordance with Savannah River Site post-closure inspection procedures.

NOTE

1. Monitoring wells associated with this waste unit are maintained in accordance with EC&ACP monitoring well procedures.
2. Manual C3, ER-SOP-019, *Waste Unit Inspection and Maintenance*, shall be referred to for inspection details.
3. Steps in this checklist may be completed concurrently or in any order.

 SCHEDULED
 UNSCHEDULED

A = Satisfactory		A or X	Observation/Corrective Action Taken
X = Unsatisfactory (Explanation required)			
1.	Verify roads are accessible.	A	
2.	Verify six waste unit warning signs are in acceptable condition, have correct information, and are legible from a distance of 25 feet.	A	

Chemical, Metal, and Pesticide Pits (CMPP) Field Inspection Checklist

Manual: C3
 Procedure: ER-IDS-019-062
 Revision: 2
 Page: 2 of 3

 SCHEDULED

 UNSCHEDULED

A = Satisfactory X = Unsatisfactory (Explanation required)	A or X	Observation/Corrective Action Taken
3. Verify there are no unauthorized excavation, digging, or construction activities within land use control area.	A	
4. Verify integrity of any drainage ditches, sediment basins, and required land grading for proper drainage is maintained, are free of excessive erosion, sediment build-up, and any debris restricting water flow.	X	SEDIMENT/RETENTION BASIN NEEDS CUTTING + VEGETATION REMOVED. SEE MAP NOTE ①. REF. MAINT. REGISTER PC-2018-00055
5. Verify no woody vegetation is growing on the soil cover. Remove or identify as needed.	A	
6. Verify grass density on soil cover has no bare spots more than 3 by 3 feet in area. The height of vegetative cover should not impair visual inspection of soil cover.	A	
7. Verify soil cover has no signs of unacceptable erosion or depressions (subsidence).	A	
8. Verify signs of burrowing or mounding animals are not present at CMPP soil cover.	X	ACTIVE ANT MOUNDS ON SOIL COVER. SEE MAP NOTE ②. REF. MAINT. REGISTER PC-2018-00056

Inspected By

CHARLES P. CARTER
 (Print Name)

Charles P. CARTER
 (Signature)

5-29-18
 (Date)

Review By Post-Closure Manager

George W. Soyner
 (Print Name)

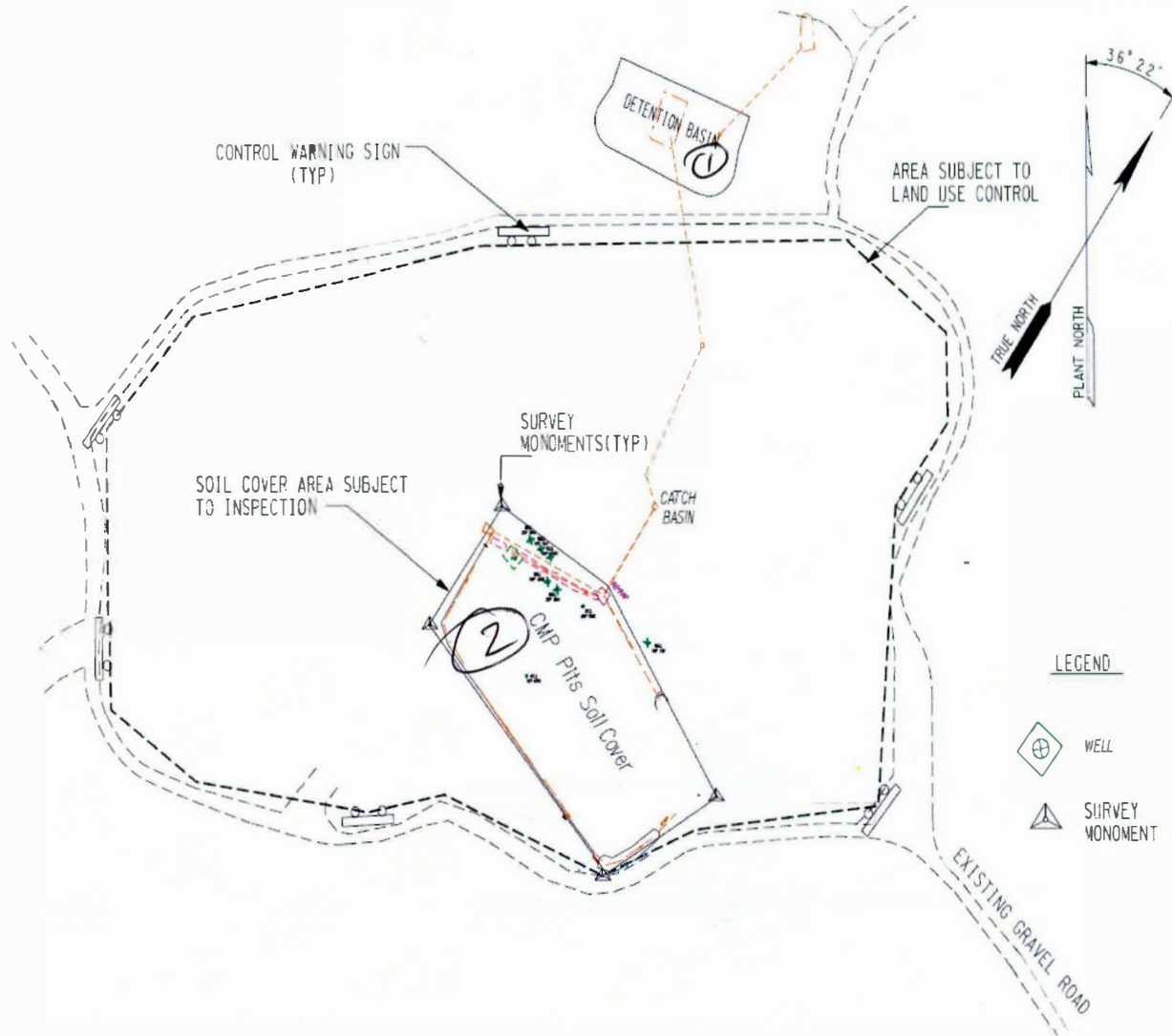
George W. Soyner
 (Signature)

6/19/18
 (Date)

Chemical, Metal, and Pesticide Pits (CMPP) Field Inspection Checklist

Manual: C3
 Procedure: ER-IDS-019-062
 Revision: 2
 Page: 3 of 3

Map of Chemical, Metal, and Pesticides Pits



NOTES: ① = SEDIMENT/RETENTION BASIN NEEDS CUTTING + VEGETATION REMOVED, USFS WILL CUT + REMOVE VEGETATION. ② ACTIVE ANT MOUNDS ON SOIL COVER. Applied 3.0 lbs OF EXTINGUISHT ANT BAIT.

~~ADD FURTHER ENTRIES~~

CPL. 5-29-18

POST CLOSURE MAINTENANCE REGISTER

Index Number	Unit Name
61	CHEMICAL, METAL AND PESTICIDES PITS (CMP)

Watershed PEN BRANCH

AHA #	NA
Work Order #	NA
Work Group	POST CLOSURE MAINTENANCE
Priority	Medium
RCRA	NO

Maintenance Number	PC-2018-00056	Maintenance Status	Complete
Inspection Date	5/29/2018	Chemical Type	Pesticide
Completion Date	5/29/2018	Chemical Name	Extinguish
		Amount Used	3.0 Pounds

Description Of Maintenance Item
Active ant mounds on waste unit

Maintenance Item Corrected
Applied Extinguish pesticide

Notes New observation.

Approved by : George Joyner - ACP Post Closure Manager

Signature George W. Joyner Approval date : 6/11/18

