

108519

ENVIRONMENTAL COMPLIANCE & AREA COMPLETION PROJECTS (EC&ACP) STANDARD
OPERATING PROCEDURES, VOL. I

Manual: C3
Procedure: ER-IDS-019-034
Revision: 3
Effective Date: 06/01/2016
Type-Class: Form
Page: 1 of 3

HEAVY WATER EQUIPMENT WASH BASIN FIELD INSPECTION CHECKLIST

WORKING COPY

This document is a Working Copy. Prior to start of work, verify this is the latest revision per the Procedure Index.

Charles P. Carter
Verified By

10-12-17
Date

CAUTION

The Inspector shall IMMEDIATELY notify the Post-Closure Manager and Environmental Compliance Authority if there has been a breach or compromise of the institutional controls of this waste unit. This notification shall be in accordance with Savannah River Site post-closure inspection procedures.

NOTE

1. Manual C3, ER-SOP-019, *Waste Unit Inspection and Maintenance*, shall be referred to for inspection details.
2. Steps in this checklist may be completed concurrently or in any order.



SCHEDULED



UNSCHEDULED

A = Satisfactory X = Unsatisfactory (Explanation required)		A or X	Observation/Corrective Action Taken
1.	Verify roads are accessible to closed site.	A	
2.	Verify waste unit signs (4) are in acceptable condition, have correct information, and are legible from a distance of 25 feet.	A	

Heavy Water Equipment Wash Basin Field Inspection Checklist

Manual: C3
 Procedure: ER-IDS-019-034
 Revision: 3
 Page: 2 of 3

SCHEDULED UNSCHEDULED

A = Satisfactory	A or X	Observation/Corrective Action Taken
X = Unsatisfactory (Explanation required)		
3. Verify monuments are in acceptable condition.	A	
4. Other <i>NO FURTHER ENTRIES</i>		<i>CPL 10-12-17</i>

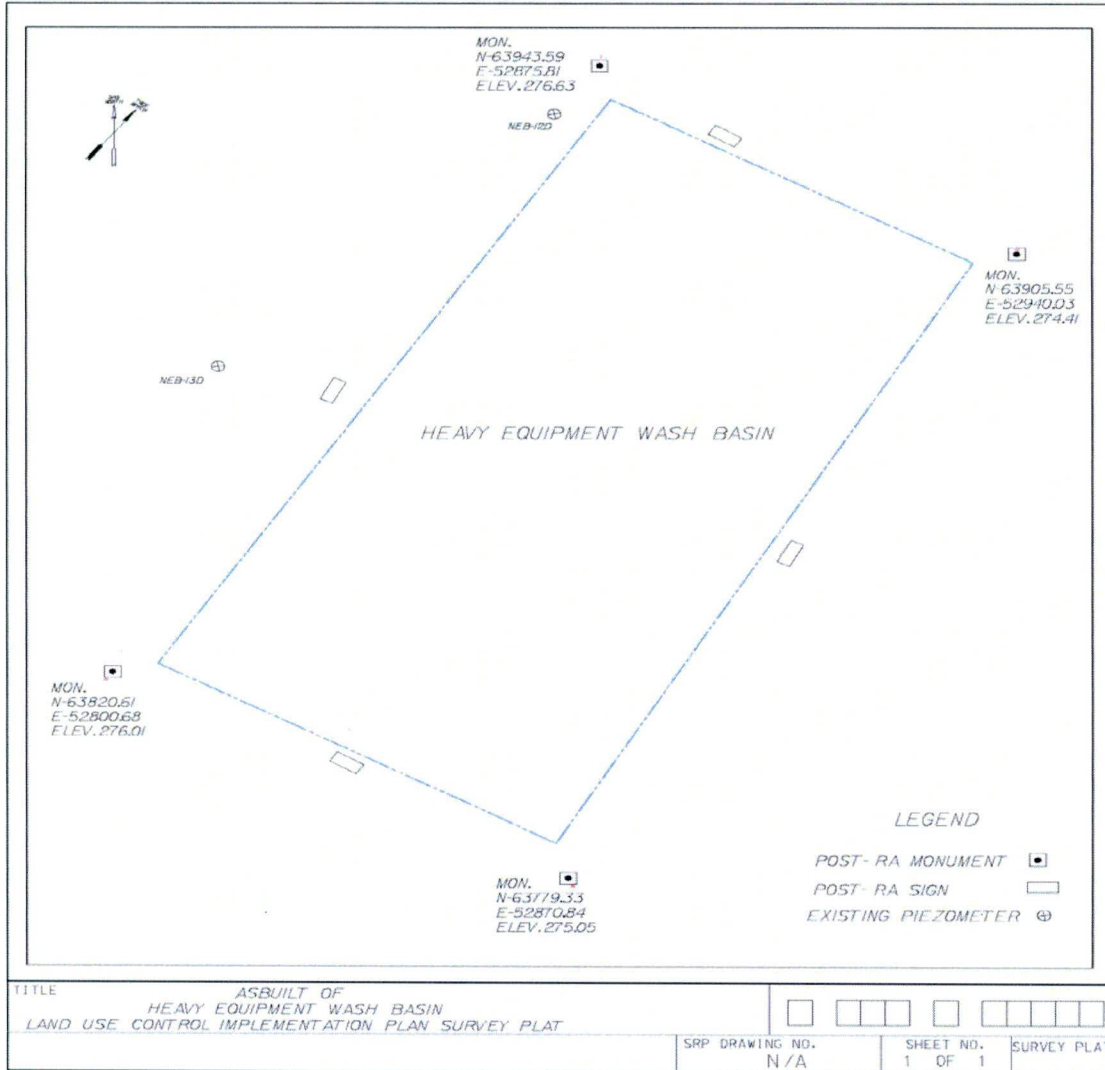
Inspected By		
<i>CHARLES P. CARTER / Richard Fazio</i> (Print Name)	<i>Charles P. Carter / R. Fazio</i> (Signature)	<i>10-12-17 / 10-12-17</i> (Date)

Review By Post-Closure Manager		
<i>George W Joyner</i> (Print Name)	<i>George W Joyner</i> (Signature)	<i>11/29/17</i> (Date)

Heavy Water Equipment Wash Basin Field Inspection Checklist

Manual: C3
Procedure: ER-IDS-019-034
Revision: 3
Page: 3 of 3

As-Built of Heavy Equipment Wash Basin Land Use Control Implementation Plan Survey Plat



NOTES:

NO ENTRIES

J.P. 10-12-17