

**ENVIRONMENTAL COMPLIANCE & AREA COMPLETION PROJECTS (EC&ACP) STANDARD
OPERATING PROCEDURES, VOL. I**
Manual: C3
Procedure: ER-IDS-019-038
Revision: 3
Effective Date: 06/01/2016
Type-Class: Form
Page: 1 of 3
D-AREA RUBBLE PIT (DRP) FIELD INSPECTION CHECKLIST
WORKING COPY

This document is a Working Copy. Prior to start of work, verify this is the latest revision per the Procedure Index.



Verified By

12-20-18

Date

CAUTION

The Inspector shall IMMEDIATELY notify the Post-Closure Manager and Environmental Compliance Authority if there has been a breach or compromise of the institutional controls of this waste unit. This notification shall be in accordance with Savannah River Site post-closure inspection procedures.

NOTE

1. Manual C3, ER-SOP-019, *Waste Unit Inspection and Maintenance*, shall be referred to for inspection details.
2. Monitoring wells associated with this waste unit are maintained in accordance with EC&ACP monitoring well procedures.
3. Steps in this checklist may be completed concurrently or in any order.


SCHEDULED

UNSCHEDULED

A = Satisfactory		A or X	Observation/Corrective Action Taken
X = Unsatisfactory (Explanation required)			
1.	Verify roads are accessible.	A	
2.	Verify unit signs (8) are in acceptable condition, have correct information, and are legible from a distance of 25 feet.	A	

D-Area Rubble Pit (DRP) Field Inspection Checklist

Manual: C3
 Procedure: ER-IDS-019-038
 Revision: 3
 Page: 2 of 3

 SCHEDULED

 UNSCHEDULED

A = Satisfactory X = Unsatisfactory (Explanation required)	A or X	Observation/Corrective Action Taken
3. Visually verify DRP area is developing self-sustain vegetation.	A	

Inspected By

CHARLES P. CARTER
 (Print Name)

Charles P. Carter
 (Signature)

12-20-18
 (Date)

Review By Post-Closure Manager

George W Joyner
 (Print Name)

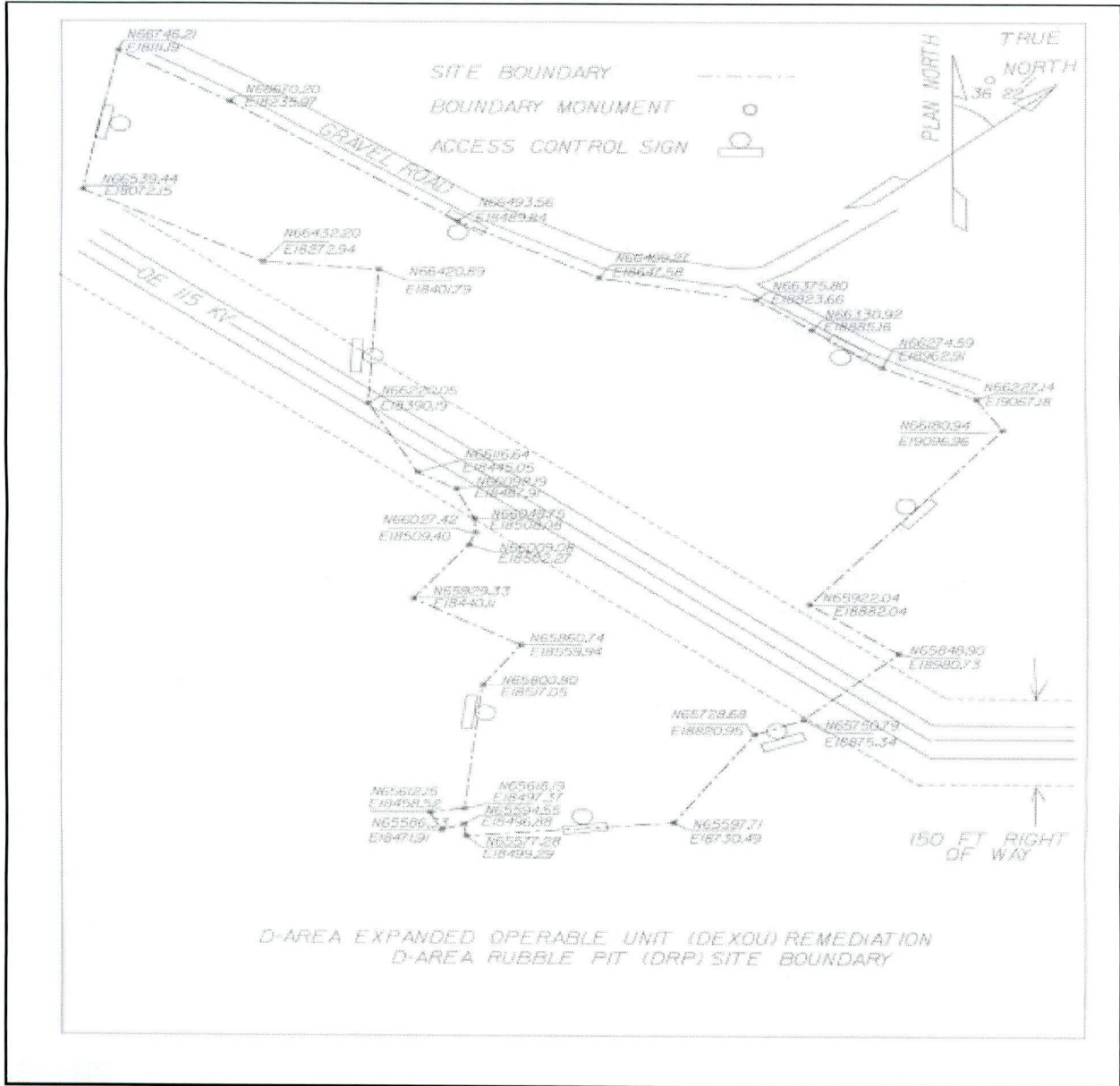
George W Joyner
 (Signature)

1/3/19
 (Date)

D-Area Rubble Pit (DRP) Field Inspection Checklist

Manual: C3
Procedure: ER-IDS-019-038
Revision: 3
Page: 3 of 3

D-Area Rubble Pit (DRP)



NOTES:

NO ENTRIES THIS PAGE

CPL 12-20-18