

ENVIRONMENTAL COMPLIANCE & AREA COMPLETION PROJECTS (EC&ACP) STANDARD OPERATING PROCEDURES, VOL. I

Manual: C3
Procedure: ER-IDS-019-030
Revision: 6
Effective Date: 12/21/2021
Type-Class: Checklist
Page: 1 of 3

P-AREA BURNING RUBBLE PIT (BLDG. 131-P) FIELD INSPECTION CHECKLIST

WORKING COPY

This document is a Working Copy. Prior to start of work, verify this is the latest revision per the Procedure Index.

Wendy Sahn _____ 06/20/2024
 Verified By Date

CAUTION

The Inspector is required to IMMEDIATELY notify the Post-Closure Manager and Environmental Compliance Authority if there has been a breach or compromise of the institutional controls of this waste unit. This notification is required to be in accordance with Savannah River Site post-closure inspection procedures.

NOTE

1. Manual C3, Volume I, Procedure ER-SOP-019, Waste Unit and IOU Inspection and Maintenance, is referenced for inspection details.
2. Monitoring wells associated with this waste unit are maintained in accordance with Environmental Compliance & Area Completion Projects monitoring well procedures.
3. Steps in this checklist may be completed concurrently or in any order.

SCHEDULED **UNSCHEDULED**

A = Satisfactory		A or X	Observation/Corrective Action Taken
X = Unsatisfactory (Explanation required)			
1.	VERIFY roads to waste unit are accessible.	A	
2.	VERIFY waste unit signs (4) are in acceptable condition, have correct information, and are legible from a distance of 25 feet.	A	

P-Area Burning Rubble Pit (Bldg. 131-P) Field Inspection Checklist

Manual: C3
 Procedure: ER-IDS-019-030
 Revision: 6
 Page: 2 of 3

SCHEDULED

UNSCHEDULED

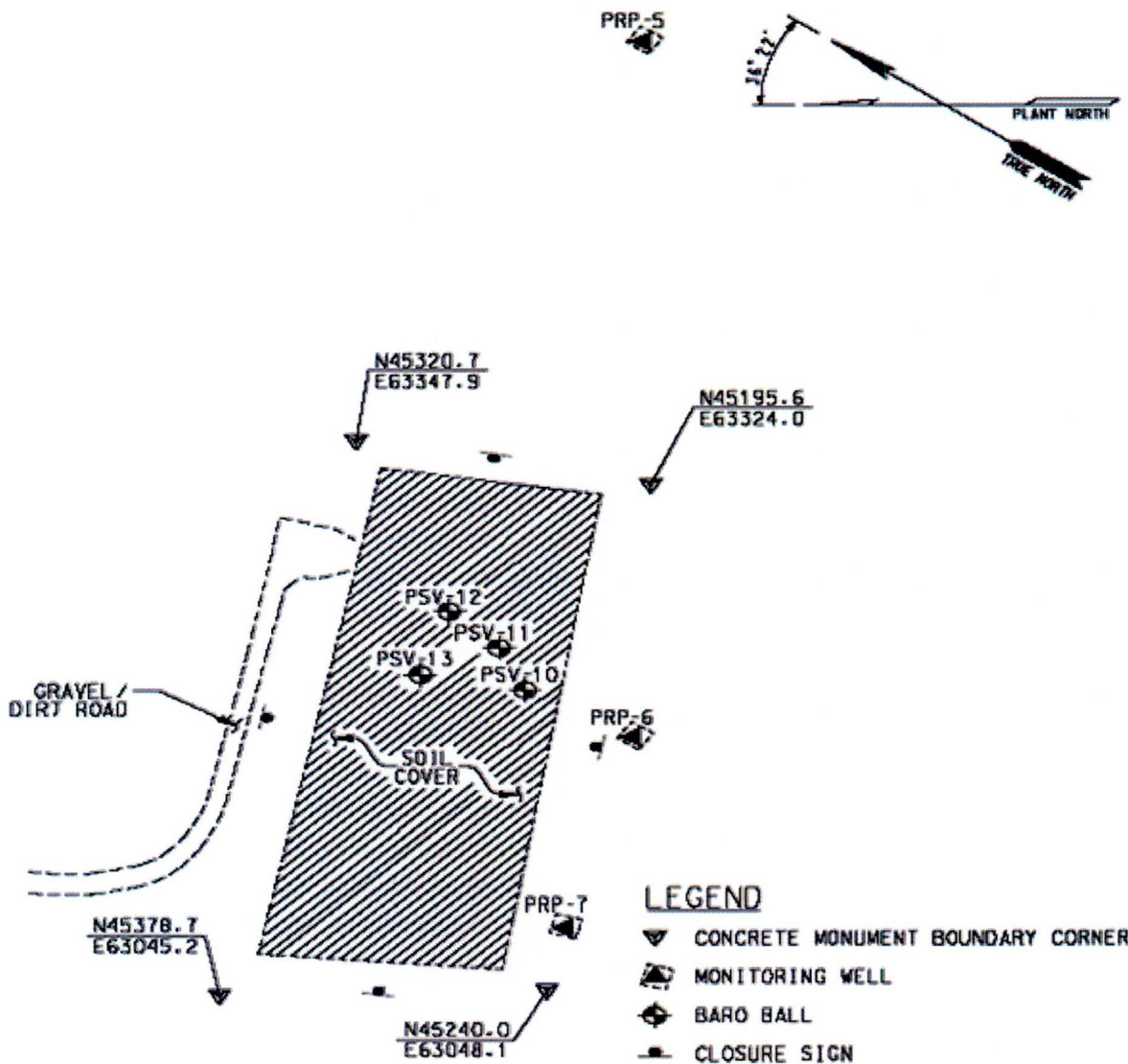
A = Satisfactory X = Unsatisfactory (Explanation required)		A or X	Observation/Corrective Action Taken
3.	VERIFY there are no unauthorized excavations, digging, or construction activities on soil cover.	A	
4.	CHECK integrity of drainage ditches for presence of excessive erosion, sediment build-up, and any debris restricting water flow.	A	
5.	VERIFY no woody vegetation is growing on soil cover, AND REMOVE OR IDENTIFY as needed.	A	
6.	VISUALLY CHECK vegetative cover for grass density with no bare spots more than 3 feet by 3 feet in area. (The height of vegetative cover should not impair visual inspection of soil cover. This will be determined by the Inspector.)	A	
7.	CHECK soil cover for signs of erosion or depressions (subsidence).	A	
8.	CHECK for evidence of burrowing animals.	A	
9.	Other. None	A	

Inspected By		
Donald A. Sahm <i>(Print Name)</i>	<i>Donald A Sahm</i> <i>(Signature)</i>	06/20/2024 <i>(Date)</i>
Reviewed By Post-Closure Manager		
Brian Hanshew <i>(Print Name)</i>	<i>BHanshew</i> <i>(Signature)</i>	6/26/2024 <i>(Date)</i>

P-Area Burning Rubble Pit (Bldg. 131-P) Field Inspection Checklist

Manual: C3
Procedure: ER-IDS-019-030
Revision: 6
Page: 3 of 3

Map of P-Area Burning Rubble Pit



NOTES: None
