

ENVIRONMENTAL COMPLIANCE & AREA COMPLETION PROJECTS (EC&ACP) STANDARD OPERATING PROCEDURES, VOL. I

Manual: C3
 Procedure: ER-IDS-019-014
 Revision: 5
 Effective Date: 06/02/2016
 Type-Class: Form
 Page: 1 of 5

MISCELLANEOUS CHEMICAL BASIN/METAL BURNING PIT (BLDGS. 731-4A AND 731-5A) FIELD INSPECTION CHECKLIST

WORKING COPY

This document is a Working Copy. Prior to start of work, verify this is the latest revision per the Procedure Index.

Charles P. Carter

Verified By

6-22-18

Date

CAUTION

The Inspector shall IMMEDIATELY notify the Post-Closure Manager and Environmental Compliance Authority if there has been a breach or compromise of the institutional controls of this waste unit. This notification shall be in accordance with Savannah River Site post-closure inspection procedures.

NOTE

1. Manual C3, ER-SOP-019, *Waste Unit Inspection and Maintenance*, shall be referred to for inspection details.
2. Monitoring wells associated with this waste unit are maintained in accordance with EC&ACP Monitoring Well Procedures.
3. Steps in this checklist may be completed concurrently or in any order.

SCHEDULED

UNSCHEDULED

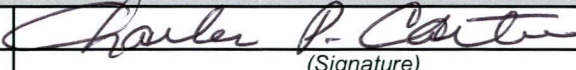
A = Satisfactory X = Unsatisfactory (Explanation required)		A or X	Observation/Corrective Action Taken
1.	Verify roads to waste unit are accessible.	A	
2.	Verify that the waste unit signs (6) are in acceptable condition, have correct information and are legible from a distance of 25 feet.	X	WASTE UNIT SIGNS AT THE METAL BURNING PIT NEED REPLACING. SEE MAP NOTE ① REF. MGMT Register PL-2018-00064


Miscellaneous Chemical Basin/Metal Burning Pit (Bldgs. 731-4A And 731-5A) Field Inspection Checklist

Manual: C3
 Procedure: ER-IDS-019-014
 Revision: 5
 Page: 2 of 5

SCHEDULED UNSCHEDULED

A = Satisfactory X = Unsatisfactory (Explanation required)	A or X	Observation/Corrective Action Taken
3. Verify that there is no excavating, digging or construction activity on the soil cover.	A	
4. Verify that no woody vegetation is growing on the soil cover. Remove or identify as needed.	A	
5. Visually check vegetative cover for grass density with no bare spots more than 3 feet by 3 feet in area. The height of the vegetation should not impair the visual inspection of the soil cover. This will be determined by the Inspector.	A	
6. Check the soil cover for signs of erosion or depressions (subsidence).	X	MINOR DEPRESSIONS CAUSED BY TRACTOR + BUSHES DURING GRASS MOWING. SEE MAP NOTE ②. REF. MAINT REGISTER PL-2018-00065
7. Check for signs of burrowing animals.	X	ACTIVE ANT MOUNDS ON SOIL COVER. SEE MAP NOTE ③. REF. MAINT. REGISTER PL-2018-00066
8. Other	NO FURTHER ENTRIES	CPL 6-22-18

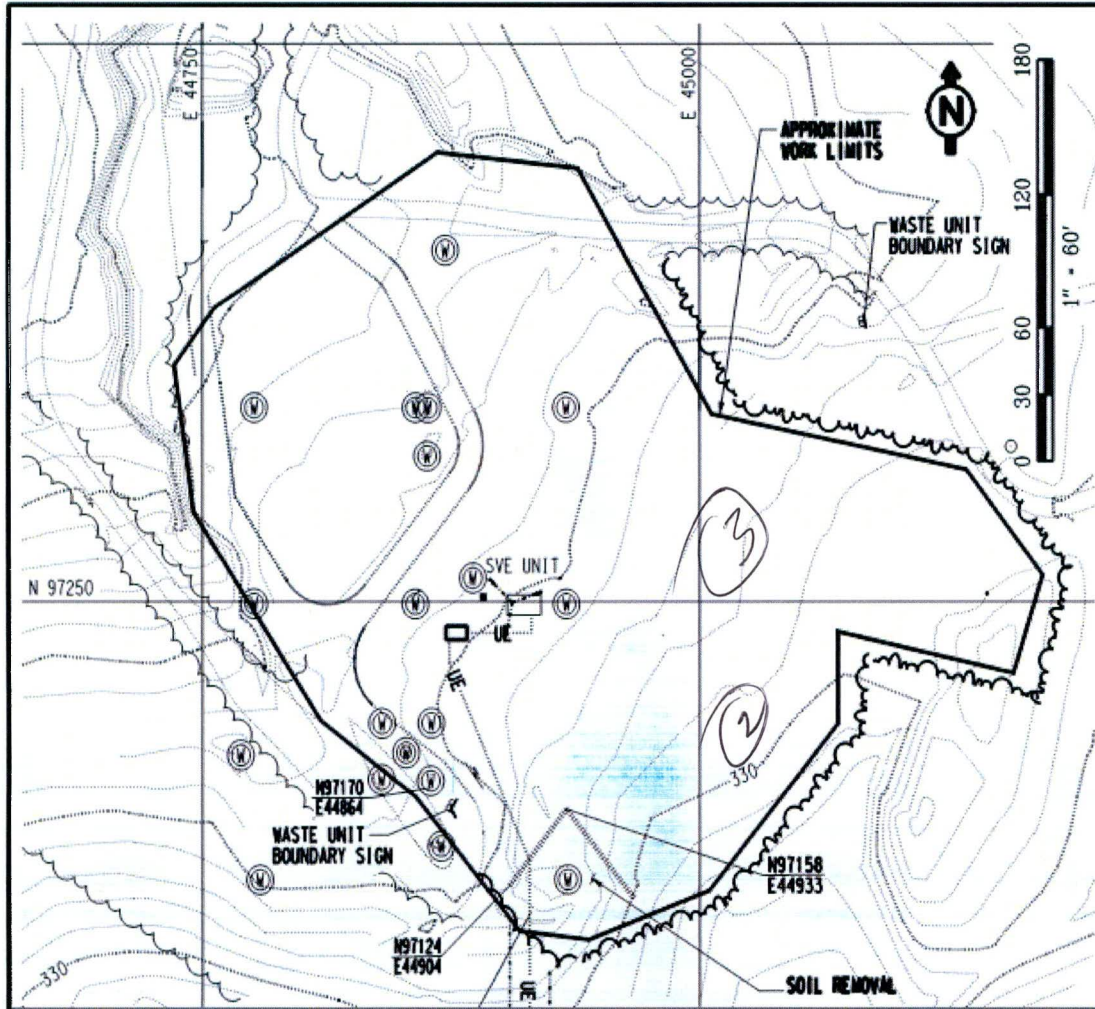
Inspected By		
CHARLES P. CARTER (Print Name)	 (Signature)	6-22-18 (Date)

Review By Post-Closure Manager		
George W Joyner (Print Name)	 (Signature)	7/2/18 (Date)

Miscellaneous Chemical Basin/Metal Burning Pit (Bldgs. 731-4A And 731-5A) Field Inspection Checklist

Manual: C3
 Procedure: ER-IDS-019-014
 Revision: 5
 Page: 3 of 5

MAP MISCELLANEOUS CHEMICAL BASIN (BLDG. 731-4A)



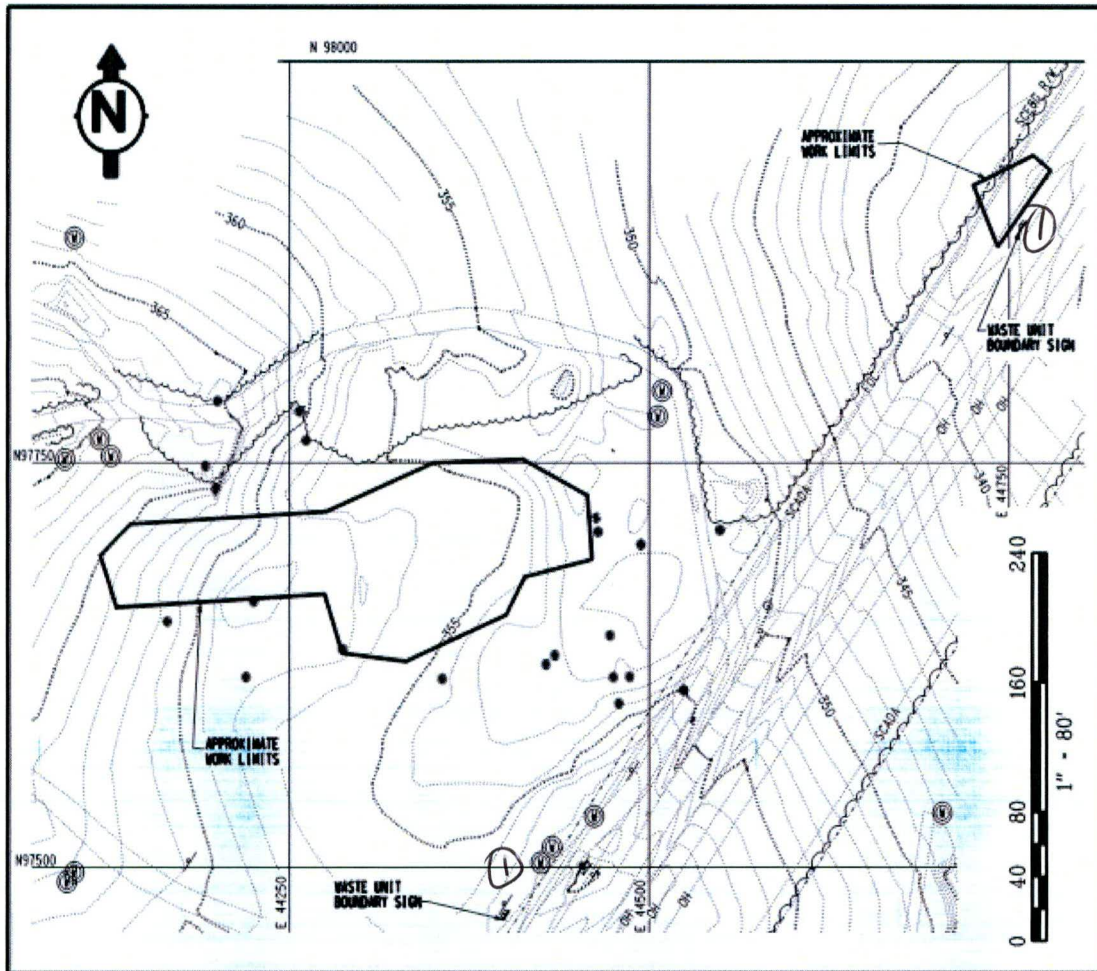
MISC CHEM UNIT

NOTES: (2) = MINOR DEPRESSIONS CAUSED BY TRACTOR +
 BUSH HOG. USFS WILL FILL WITH TOP SOIL AND TOPPED
 WITH GRASS SEED + STRAW. (3) = ACTIVE ANT MOUNDS
 ON SOIL COVER. APPLIED 2.0 lbs OF EXTINGUISH ANT
 BAIT. CRL 6-22-18

Miscellaneous Chemical Basin/Metal Burning Pit (Bldgs. 731-4A And 731-5A) Field Inspection Checklist

Manual: C3
 Procedure: ER-IDS-019-014
 Revision: 5
 Page: 4 of 5

MAP METALS BURNING PIT (BLDG. 731-5A)



METALS BURNING PIT

NOTES: (1) = WASTE UNIT SIGNS AT THE METALS BURNING PIT NEEDS REPLACEMENT. SIGN SHOP WILL FABRICATE SIGN + POST CLOSURE MAINT. WILL INSTALL.

~~NO FURTHER ENTRIES~~

CPL.

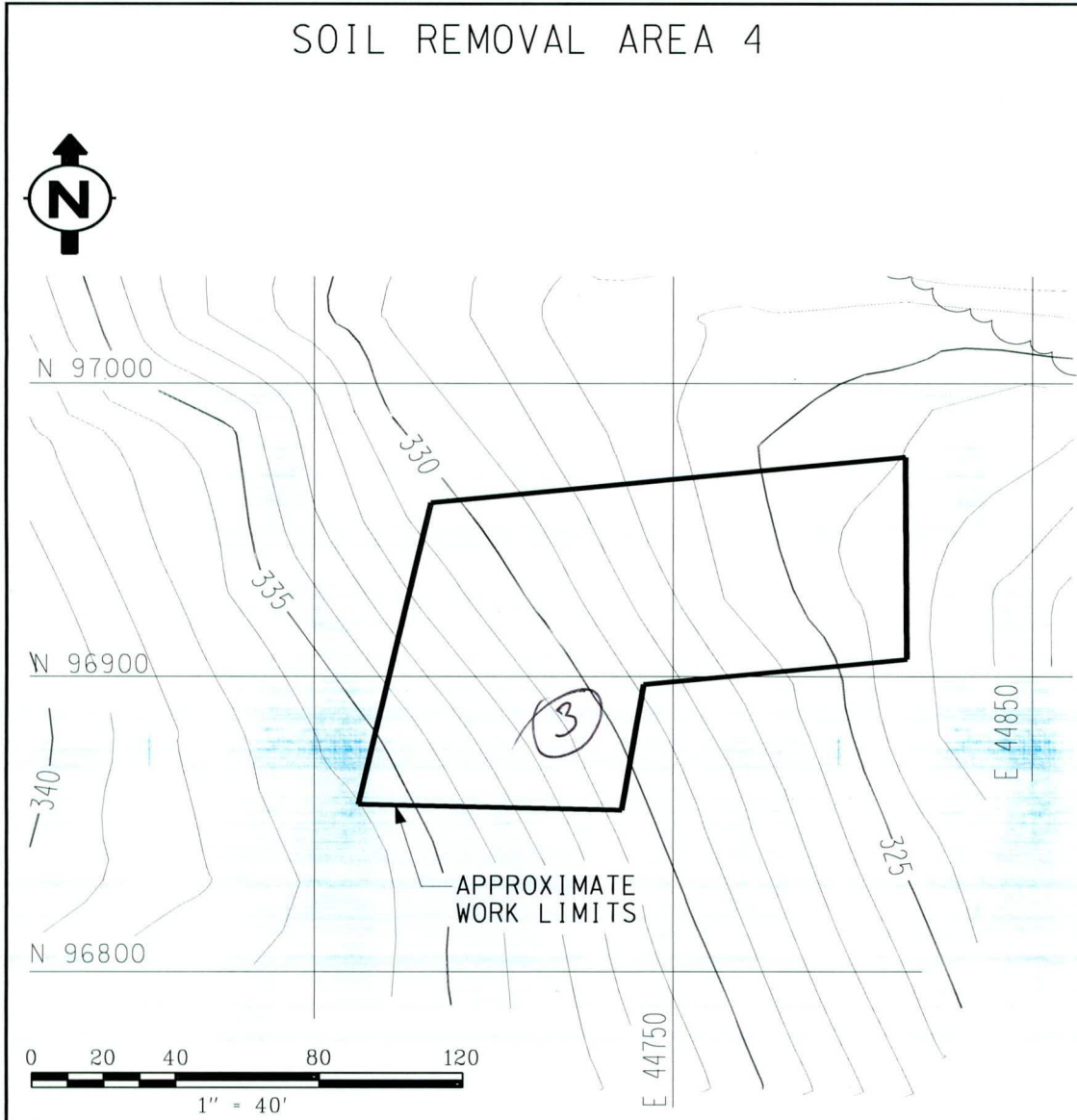
6-22-18

Miscellaneous Chemical Basin/Metal Burning Pit (Bldgs. 731-4A And 731-5A) Field Inspection Checklist

Manual:
Procedure:
Revision:
Page:

C3
ER-IDS-019-014
5
5 of 5

MAP SOIL REMOVAL AREA 4



NOTES: (3) = ACTIVE ANT MOUNDS ON SOIL COVER.
APPLIED EXTINGUISH ANT BAIT. THE TOTAL AMOUNT
OF ANT BAIT APPLIED IS RECORDED ON PAGE 3 OF 5.
OF THIS PROCEDURE.

CPH 6-22-18

POST CLOSURE MAINTENANCE REGISTER

Index Number	Unit Name
101	MISCELLANEOUS CHEMICAL BASIN - 731-4A
102	METALS BURNING PITS - 731-5A

Watershed UPPER THREE RUNS

AHA # NA
 Work Order # N/A
 Work Group POST CLOSURE MAINTENANCE
 Priority Medium
 RCRA YES

Maintenance Number	PC-2018-00064	Maintenance Status	Complete
Inspection Date	6/22/2018	Chemical Type	NA
Completion Date	8-3-2018	Chemical Name	
		Amount Used	

Description Of Maintenance Item

Waste Unit Signs at the Metals Burning Pit need replacing.

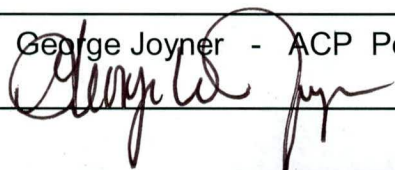
Maintenance Item Corrected

Post Closure Miantenance replaced signs

Notes New observation.

Approved by : George Joyner - ACP Post Closure Manager

Signature



Approval date :

8/7/18

POST CLOSURE MAINTENANCE REGISTER

Index Number	Unit Name
101	MISCELLANEOUS CHEMICAL BASIN - 731-4A
102	METALS BURNING PITS - 731-5A

Watershed UPPER THREE RUNS

AHA #	NA
Work Order #	N/A
Work Group	POST CLOSURE MAINTENANCE
Priority	Medium
RCRA	YES

Maintenance Number	PC-2018-00066	Maintenance Status	Complete
Inspection Date	6/22/2018	Chemical Type	Pesticide
Completion Date	6/22/2018	Chemical Name	Extinguish
		Amount Used	2.0 Pounds

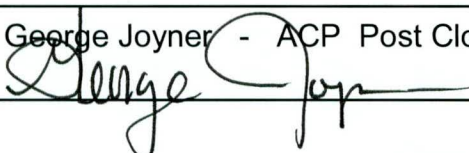
Description Of Maintenance Item
Active ant mounds on waste unit

Maintenance Item Corrected
Applied Extinguish pesticide

Notes New observation.

Approved by : George Joyner - ACP Post Closure Manager

Signature



Approval date :

7/2/18

POST CLOSURE MAINTENANCE REGISTER

Index Number	Unit Name
101	MISCELLANEOUS CHEMICAL BASIN - 731-4A
102	METALS BURNING PITS - 731-5A

Watershed UPPER THREE RUNS

AHA # NA
 Work Order # N/A
 Work Group USFS
 Priority Medium
 RCRA YES

Maintenance Number	PC-2018-00065	Maintenance Status	Complete
Inspection Date	6/22/2018	Chemical Type	NA
Completion Date	3/4/2019	Chemical Name	
		Amount Used	

Description Of Maintenance Item

Minor depressions caused by the tractor and bush hog during grass mowing at the Miscellaneous Chemical Basin.

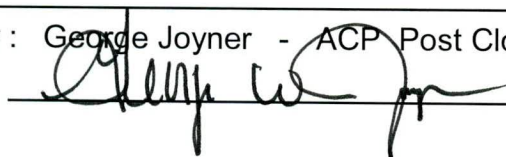
Maintenance Item Corrected

USFS filled depressions with top soil then topped with grass seed and straw

Notes New Observation

Approved by : George Joyner - ACP Post Closure Manager

Signature



Approval date :

3/11/19