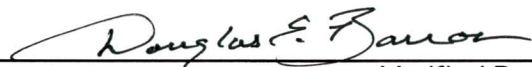


**ENVIRONMENTAL COMPLIANCE & AREA COMPLETION PROJECTS (EC&ACP) STANDARD
OPERATING PROCEDURES, VOL. I**
Manual: C3
Procedure: ER-IDS-019-027
Revision: 6
Effective Date: 09/02/2021
Type-Class: Checklist
Page: 1 of 4
OLD RADIOACTIVE WASTE BURIAL GROUND (BLDG. 643-E) FIELD INSPECTION CHECKLIST
WORKING COPY

This document is a Working Copy. Prior to start of work, verify this is the latest revision per the Procedure Index.



Verified By

11/17/2022

Date

CAUTION

The Inspector will IMMEDIATELY notify the Post-Closure Manager and Environmental Compliance Authority if there has been a breach or compromise of the institutional controls of this waste unit. This notification will be in accordance with Savannah River Site post-closure inspection procedures.

NOTE

1. Manual C3, Volume 1, Procedure ER-SOP-019, Waste Unit and IOU Inspection and Maintenance, will be used as a reference for inspection details.
2. Monitoring wells associated with this waste unit are maintained in accordance with Environmental Compliance and Area Completion Projects Monitoring Well Procedures.
3. Steps in this checklist may be completed concurrently or in any order.

 SCHEDULED
 UNSCHEDULED

A = Satisfactory		A or X	Observation/Corrective Action Taken
X = Unsatisfactory (Explanation required)			
1.	VERIFY roads to waste unit are accessible.	A	
2.	VERIFY that the waste unit signs (24) are in acceptable condition, have the correct information, and are legible from a distance of 25 feet.	A	

Old Radioactive Waste Burial Ground (Bldg. 643-E) Field Inspection Checklist

Manual: C3
 Procedure: ER-IDS-019-027
 Revision: 6
 Page: 2 of 4

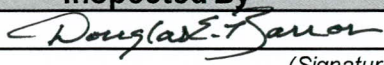
SCHEDULED

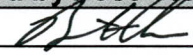
UNSCHEDULED

A = Satisfactory X = Unsatisfactory (Explanation required)		A or X	Observation/Corrective Action Taken
3.	VERIFY that fence is in good condition and that unattended gates are locked.	X	Carry Over Item: North fence line needs overhanging limbs and vegetation removed See Map Note: 1 Reference Maintenance Register: PC-2021-00110
4.	VERIFY there is no unauthorized digging, excavation, or construction activities on the soil cover.	A	
5.	CHECK the integrity of drainage ditches for the presence of excessive erosion, sediment buildup, and any debris restricting water flow.	A	
6.	VISUALLY INSPECT the concrete monuments to ensure they are visible and not damaged.	A	
7.	VERIFY that no woody vegetation is growing on the soil cover, AND REMOVE OR IDENTIFY as needed.	A	
8.	VISUALLY CHECK vegetative cover for grass density with no bare spots more than 3 feet by 3 feet in area. (The height of the vegetation should not impair the visual inspection of the soil cover. This will be determined by the Inspector.)	A	
9.	CHECK the soil cover for signs of erosion, depression (subsidence), and exposed waste.	A	
10.	CHECK for signs of burrowing animals.	A	
11.	Other	NO FURTHER ENTRIES	

Old Radioactive Waste Burial Ground (Bldg. 643-E) Field Inspection Checklist

Manual: C3
Procedure: ER-IDS-019-027
Revision: 6
Page: 3 of 4

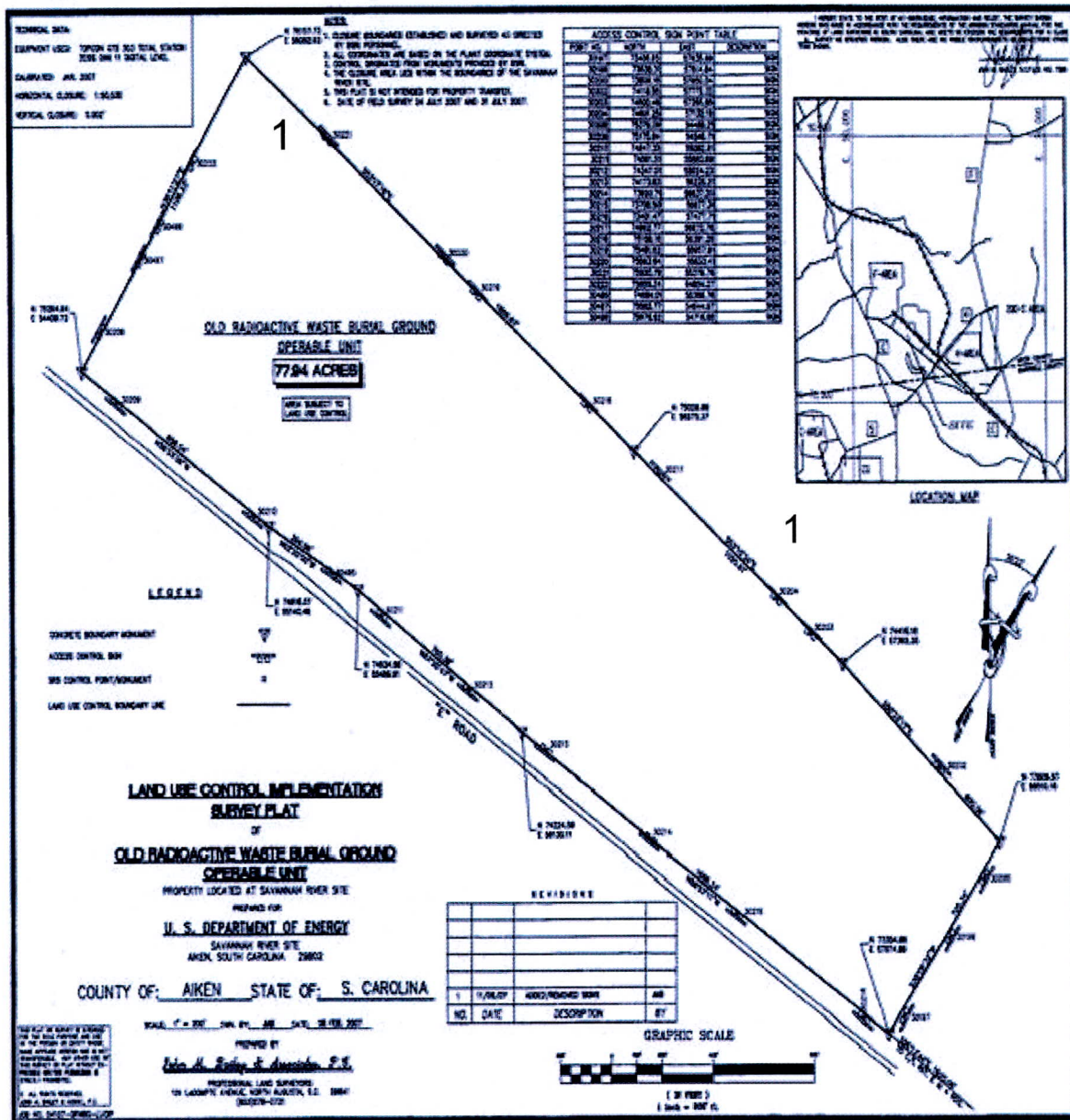
Inspected By		
Douglas E. Barron <i>(Print Name)</i>	 <i>(Signature)</i>	11/17/2022 <i>(Date)</i>

Reviewed by Post-Closure Manager		
Brian Hanshew <i>(Print Name)</i>	 <i>(Signature)</i>	12-1-2022 <i>(Date)</i>

Old Radioactive Waste Burial Ground (Bldg. 643-E) Field Inspection Checklist

Manual: C3
 Procedure: ER-IDS-019-027
 Revision: 6
 Page: 4 of 4

MAP OLD RADIOACTIVE WASTE BURIAL GROUND (Bldg. 643-E)



NOTES: 1=Carry over Item: North fence line needs overhanging limbs and vegetation removed. USFS will cut/remove over-hanging limbs and vegetation.

NO FURTHER ENTRIES

DEB 11/17/2022