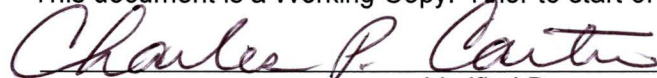


**ENVIRONMENTAL COMPLIANCE & AREA COMPLETION PROJECTS (EC&ACP) STANDARD
OPERATING PROCEDURES, VOL. I**
Manual: C3
Procedure: ER-IDS-019-008
Revision: 5
Effective Date: 06/01/2016
Type-Class: Form
Page: 1 of 3
OLD F-AREA SEEPAGE BASIN (BLDG. 904-49G) FIELD INSPECTION CHECKLIST
WORKING COPY

This document is a Working Copy. Prior to start of work, verify this is the latest revision per the Procedure Index.



Verified By

8-17-18

Date

CAUTION

The Inspector shall IMMEDIATELY notify the Post-Closure Manager and Environmental Compliance Authority if there has been a breach or compromise of the institutional controls of this waste unit. This notification shall be in accordance with Savannah River Site post-closure inspection procedures.

NOTE

1. Manual C3, ER-SOP-019, *Waste Unit Inspection and Maintenance*, shall be referred to for inspection details.
2. Monitoring wells associated with this waste unit are maintained in accordance with EC&ACP monitoring well procedures.
3. Steps in this checklist may be completed concurrently or in any order.


SCHEDULED

UNSCHEDULED

A = Satisfactory X = Unsatisfactory (Explanation required)	A or X	Observation/Corrective Action Taken
1.	Verify roads are accessible.	A
2.	Verify waste unit signs (4) and underground piping signs (10) are in acceptable condition, have the correct information and are legible from a distance of 25 feet.	A

Manual: C3
 Procedure: ER-IDS-019-008
 Revision: 5
 Page: 2 of 3

Old F-Area Seepage Basin (Bldg. 904-49G) Field Inspection Checklist

SCHEDULED UNSCHEDULED

A = Satisfactory X = Unsatisfactory (Explanation required)	A or X	Observation/Corrective Action Taken
3. Verify there is no excavating, digging or construction activity on the soil cover or over the subsurface process piping (identified by signs).	A	
4. Verify no woody vegetation is growing on the soil cover. Remove or identify as needed.	A	
5. Visually check vegetative cover for grass density with no bare spots more than 3 feet by 3 feet in area. The height of the vegetation should not impair the visual inspection of the soil cover. This will be determined by the Inspector.	A	
6. Check soil cover for signs of erosion or depressions (subsidence).	A	
7. Check for signs of burrowing animals.	A	
8. Visually inspect the concrete markers (bench marks) to ensure they are visible and not damaged.	A	
9. Check integrity of the ditch for presence of excessive erosion, sediment buildup and any debris restricting water flow.	A	
10. Other		NO FURTHER ENTRIES CPL 8-17-18

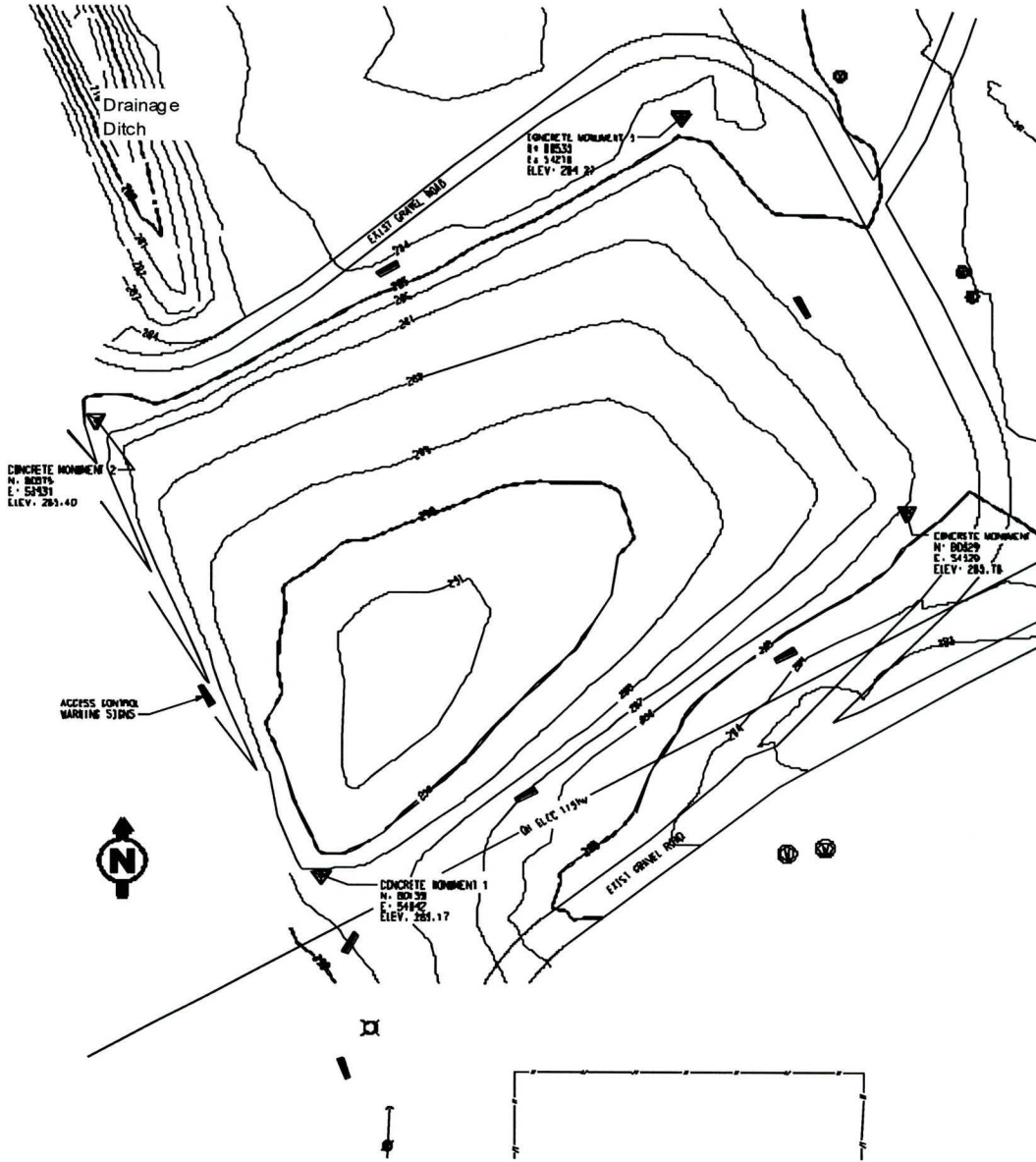
Inspected By		
<i>Charles P. Carter</i> <small>(Print Name)</small>	<i>Charles P. Carter</i> <small>(Signature)</small>	8-17-18 <small>(Date)</small>

Review By Post-Closure Manager		
<i>George W. Joyner</i> <small>(Print Name)</small>	<i>George W. Joyner</i> <small>(Signature)</small>	9/6/18 <small>(Date)</small>

Old F-Area Seepage Basin (Bldg. 904-49G) Field Inspection Checklist

Manual: C3
Procedure: ER-IDS-019-008
Revision: 5
Page: 3 of 3

Map of Old F-Area Seepage Basin (Bldg. 904-49G)



NOTES:

NO ENTRIES

CPL 8-17-18