

**ENVIRONMENTAL COMPLIANCE & AREA COMPLETION PROJECTS (EC&ACP) STANDARD
OPERATING PROCEDURES, VOL. I**
Manual: C3
Procedure: ER-IDS-019-012
Revision: 6
Effective Date: 06/01/2016
Type-Class: Form
Page: 1 of 3
K-AREA REACTOR SEEPAGE BASIN (BLDG. 904-65G) FIELD INSPECTION CHECKLIST
WORKING COPY

This document is a Working Copy. Prior to start of work, verify this is the latest revision per the Procedure Index.

Charles P. Carter
Verified By

04/06/2021
Date

CAUTION

The Inspector shall IMMEDIATELY notify the Post-Closure Manager and Environmental Compliance Authority if there has been a breach or compromise of the institutional controls of this waste unit. This notification shall be in accordance with Savannah River Site post-closure inspection procedures.

NOTE

1. Manual C3, ER-SOP-019, *Waste Unit Inspection and Maintenance*, shall be referred to for inspection details.
2. Monitoring wells associated with this waste unit are maintained in accordance with EC&ACP monitoring well procedures.
3. Steps in this checklist may be completed concurrently or in any order.

 SCHEDULED
 UNSCHEDULED

A = Satisfactory X = Unsatisfactory (Explanation required)		A or X	Observation/Corrective Action Taken
1.	Verify roads are accessible.	A	
2.	Verify waste unit signs (4) and subsurface process piping signs (5) are in acceptable condition, have correct information, and are legible from a distance of 25 feet.	A	

K-Area Reactor Seepage Basin (Bldg. 904-65G) Field Inspection Checklist

Manual: C3
Procedure: ER-IDS-019-012
Revision: 6
Page: 2 of 3

SCHEDULED **UNSCHEDULED**

A = Satisfactory		A or X	Observation/Corrective Action Taken
X = Unsatisfactory (Explanation required)			
3.	Verify there is no excavating, digging or construction activity on soil cover or over the subsurface process piping (identified by signs).	X	Carry over item: Hogs rooting on side slopes of cap. See map note:1. Ref maint. register: PC-2018-00036
4.	Verify no woody vegetation is growing on the soil cover. Remove or identify as needed.	A	
5.	Visually check vegetative cover for grass density with no bare spots more than 3 feet by 3 feet in area. The height of vegetation should not impair visual inspection of soil cover. This will be determined by the Inspector.	A	
6.	Check soil cover for signs of erosion or depressions (subsidence).	A	
7.	Check for signs of burrowing animals.	X	Active Ant Mounds on Soil Cover See Map Note: 2 Reference Maintenance Register: PC-2021-00023
8.	Visually inspect concrete markers at four corners of basin to ensure their integrity. The markers should be visible and free of damage.	A	
9.	Other	NO FURTHER ENTRIES	

CPC 04/06/2021

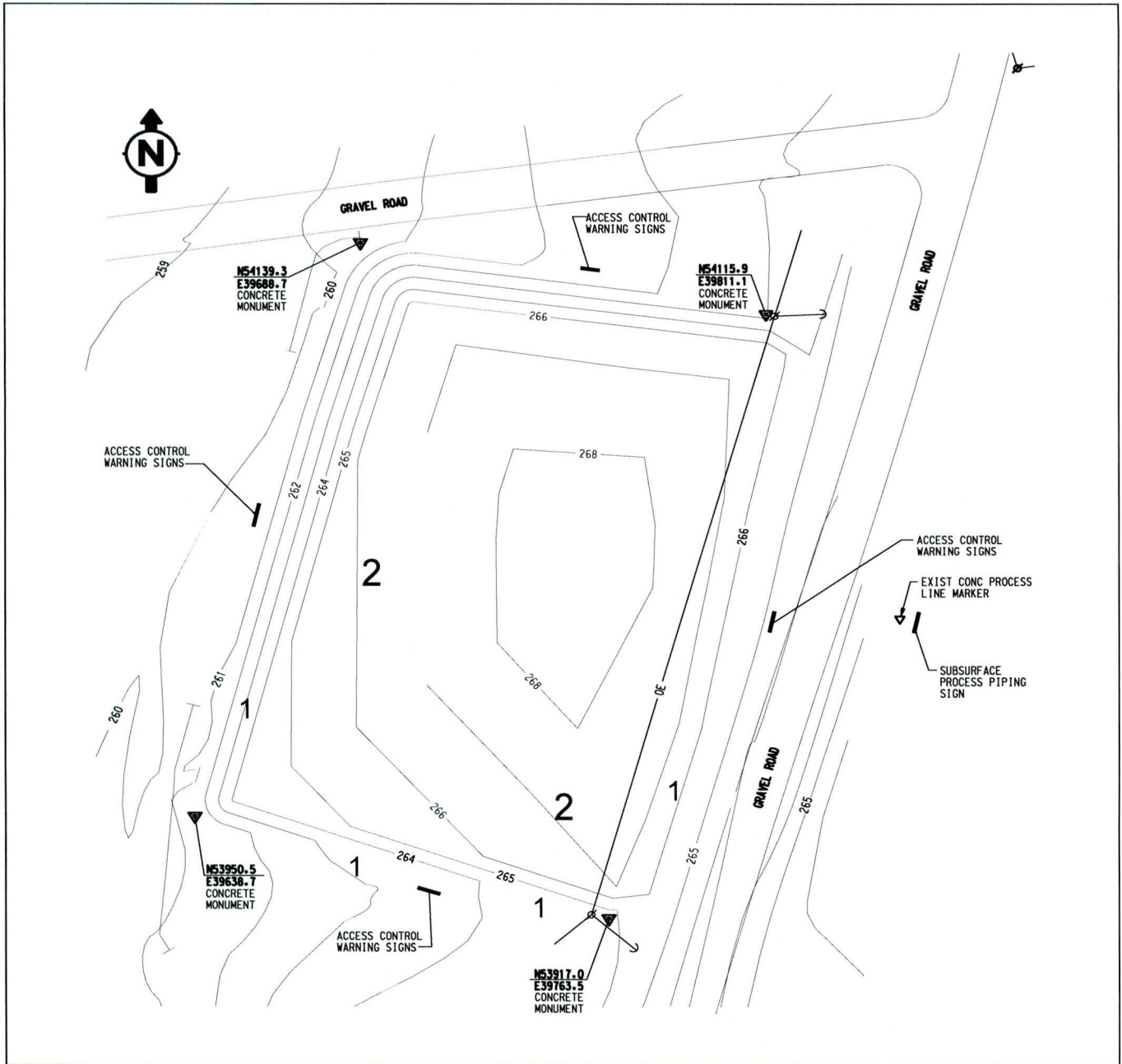
Inspected By

Charles P. Carter <i>(Print Name)</i>	<i>Charles P. Carter</i> <i>(Signature)</i>	04/06/2021 <i>(Date)</i>
--	--	-----------------------------

Review By Post-Closure Manager

George W Joyner <i>(Print Name)</i>	<i>George W. Joyner</i> <i>(Signature)</i>	4/7/2021 4/7/21 <i>(Date)</i> <i>GWJ 4/7/21</i>
--	---	---

Map of K-Area Reactor Seepage Basin (Bldg. 904-65G)



NOTES: 1= Carry over item: Hogs rooting on side slopes of cap. USFS will repair with topsoil, grass seed and straw. 2=Active ant mounds on soil cover. Applied 0.5 lb. of Extinguish ant bait

NO FURTHER ENTRIES

POST CLOSURE MAINTENANCE REGISTER

Index Number

Unit Name

87 K -AREA REACTOR SEEPAGE BASIN - 904-65G

Watershed PEN BRANCH

AHA # AHA-ER-5534
Work Order # NA
Work Group POST CLOSURE MAINTENANCE
Priority Medium
RCRA NO

Maintenance Number	PC-2021-00023	Maintenance Status	Complete
Inspection Date	4/6/2021	Chemical Type	Pesticide
Completion Date	4/6/2021	Chemical Name	Extinguish
		Amount Used	0.5 Pounds

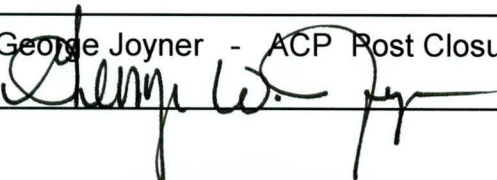
Description Of Maintenance Item
Active ant mounds on waste unit

Maintenance Item Corrected
Applied Extinguish pesticide

Notes New observation.

Approved by : George Joyner - ACP Post Closure Manager

Signature



Approval date :

4/7/21