

**ENVIRONMENTAL COMPLIANCE & AREA COMPLETION PROJECTS (EC&ACP) STANDARD
OPERATING PROCEDURES, VOL. I**

Manual: C3
Procedure: ER-IDS-019-030
Revision: 5
Effective Date: 06/01/2016
Type-Class: Form
Page: 1 of 3

P-AREA BURNING RUBBLE PIT (BLDG. 131-P) FIELD INSPECTION CHECKLIST

WORKING COPY

This document is a Working Copy. Prior to start of work, verify this is the latest revision per the Procedure Index.

Charles P. Carter

Verified By

06/17/2020

Date

CAUTION

The Inspector shall IMMEDIATELY notify the Post-Closure Manager and Environmental Compliance Authority if there has been a breach or compromise of the institutional controls of this waste unit. This notification shall be in accordance with Savannah River Site post-closure inspection procedures.

NOTE

1. Manual C3, ER-SOP-019, *Waste Unit Inspection and Maintenance*, shall be referred to for inspection details.
2. Monitoring wells associated with this waste unit are maintained in accordance with EC&ACP monitoring well procedures.
3. Steps in this checklist may be completed concurrently or in any order.

SCHEDULED

UNSCHEDULED

A = Satisfactory X = Unsatisfactory (Explanation required)		A or X	Observation/Corrective Action Taken
1.	Verify roads to waste unit are accessible.	A	
2.	Verify waste unit signs (4) are in acceptable condition, have correct information and are legible from a distance of 25 feet. REFER TO Manual C1, ER-AP-127, <i>ACP Waste Unit Field Inspection and Maintenance</i> .	A	

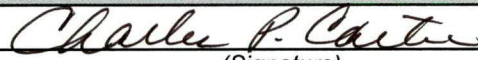
P-Area Burning Rubble Pit (Bldg. 131-P) Field Inspection Checklist

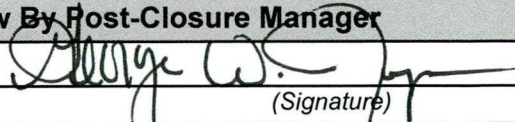
Manual: C3
 Procedure: ER-IDS-019-030
 Revision: 5
 Page: 2 of 3

SCHEDULED UNSCHEDULED

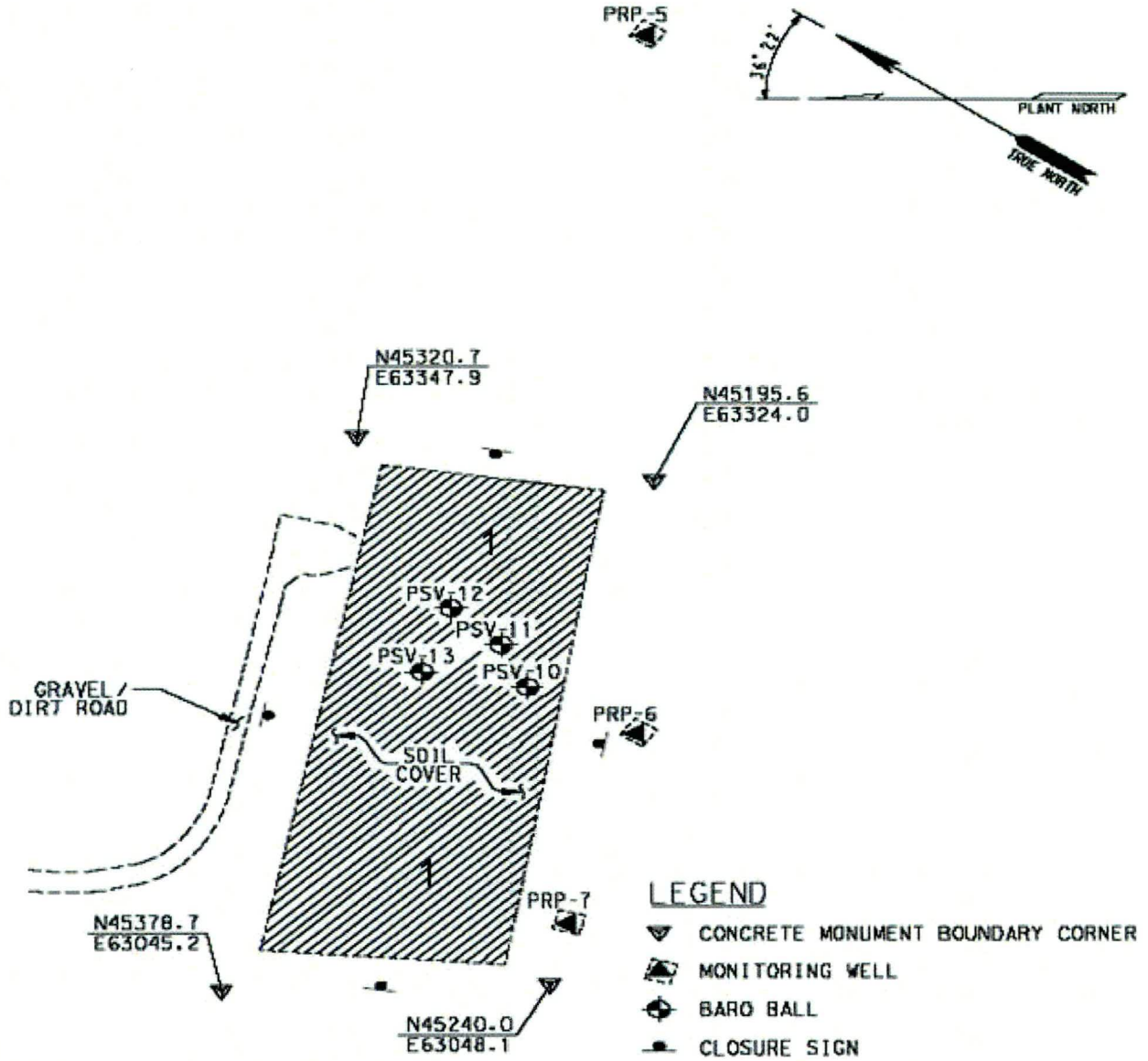
A = Satisfactory X = Unsatisfactory (Explanation required)		A or X	Observation/Corrective Action Taken
3.	Verify there are no unauthorized excavations, digging, or construction activities on soil cover.	A	
4.	Check integrity of drainage ditches for presence of excessive erosion, sediment build-up, and any debris restricting water flow.	A	
5.	Verify no woody vegetation is growing on soil cover. Remove or identify as needed.	A	
6.	Visually check vegetative cover for grass density with no bare spots more than 3 feet by 3 feet in area. The height of vegetative cover should not impair visual inspection of soil cover. This will be determined by the Inspector.	A	
7.	Check soil cover for signs of erosion or depressions (subsidence).	A	
8.	Check for evidence of burrowing animals.	X	Active ant mounds on soil cover. See map note:1 Ref. Maint. Register: PC-2020-00037
9.	Other	NO FURTHER ENTRIES	

CPC 06/17/2020

Inspected By		
Charles P. Carter <i>(Print Name)</i>	 <i>(Signature)</i>	06/17/2020 <i>(Date)</i>

Review By Post-Closure Manager		
George W. Joyner <i>(Print Name)</i>	 <i>(Signature)</i>	6/22/2020 <i>(Date)</i>

Map of P-Area Burning Rubble Pit



NOTES: 1=Active ant mounds on soil cover. Applied 0.25 lb. of extinguish ant bait.

NO FURTHER ENTRIES

POST CLOSURE MAINTENANCE REGISTER

Index Number

Unit Name

108 P-AREA BURNING/RUBBLE PIT - 131-P

Watershed STEEL CREEK

AHA # AHA-ER-5534
Work Order # N/A
Work Group POST CLOSURE MAINTENANCE
Priority Medium
RCRA NO

Maintenance Number	PC-2020-00037	Maintenance Status	Complete
Inspection Date	6/17/2020	Chemical Type	Pesticide
Completion Date	6/17/2020	Chemical Name	Extinguish
		Amount Used	0.25 Pounds

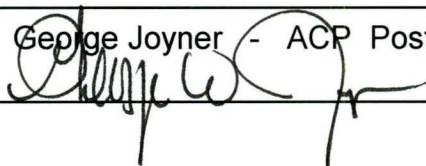
Description Of Maintenance Item
Active ant mounds on waste unit

Maintenance Item Corrected
Applied Extinguish pesticide

Notes New observation.

Approved by : George Joyner - ACP Post Closure Manager

Signature



Approval date :

6/22/2020