

**ENVIRONMENTAL COMPLIANCE & AREA COMPLETION PROJECTS (EC&ACP) STANDARD OPERATING PROCEDURES, VOL. I**

Manual: C3  
 Procedure: ER-IDS-019-076  
 Revision: 1  
 Effective Date: 03/20/2017  
 Type-Class: Form  
 Page: 1 of 3

**OUTFALL C-03 C-AREA OPERABLE UNIT FIELD INSPECTION CHECKLIST**

**WORKING COPY**

This document is a Working Copy. Prior to start of work, verify this is the latest revision per the Procedure Index.

*Charles P. Carter* \_\_\_\_\_ 3-6-18  
 Verified By Date

**CAUTION**

The Inspector shall IMMEDIATELY notify the Post-Closure Manager and Environmental Compliance Authority if there has been a breach or compromise of the institutional controls of this waste unit. This notification shall be in accordance with Savannah River Site post-closure inspection procedures.

**NOTE**

- Manual C3, Vol. 1, ER-SOP-019, Waste Unit Inspection and Maintenance, shall be referred to for inspection details.
- Monitoring wells associated with this waste unit are maintained in accordance with EC&ACP monitoring well procedures.
- Steps in this checklist may be completed concurrently or in any order.

**SCHEDULED**                       **UNSCHEDULED**

A = Satisfactory X = Unsatisfactory (Explanation required)	A or X	Observation/Corrective Action Taken
1. Verify roads are accessible.	X	ROADS AND LAND-USE BOUNDARIES NEED CUTTING. SEE MAP NOTE D. REF. MAINT. REGISTER PC-2018-00021
2. Verify land-use control boundary signs (5) are in acceptable condition, have the correct information, and are legible from a distance of 25 feet.	A	

Outfall C-03 C-Area Operable Unit Field Inspection Checklist

Manual: C3  
 Procedure: ER-IDS-019-076  
 Revision: 1  
 Page: 2 of 3

SCHEDULED

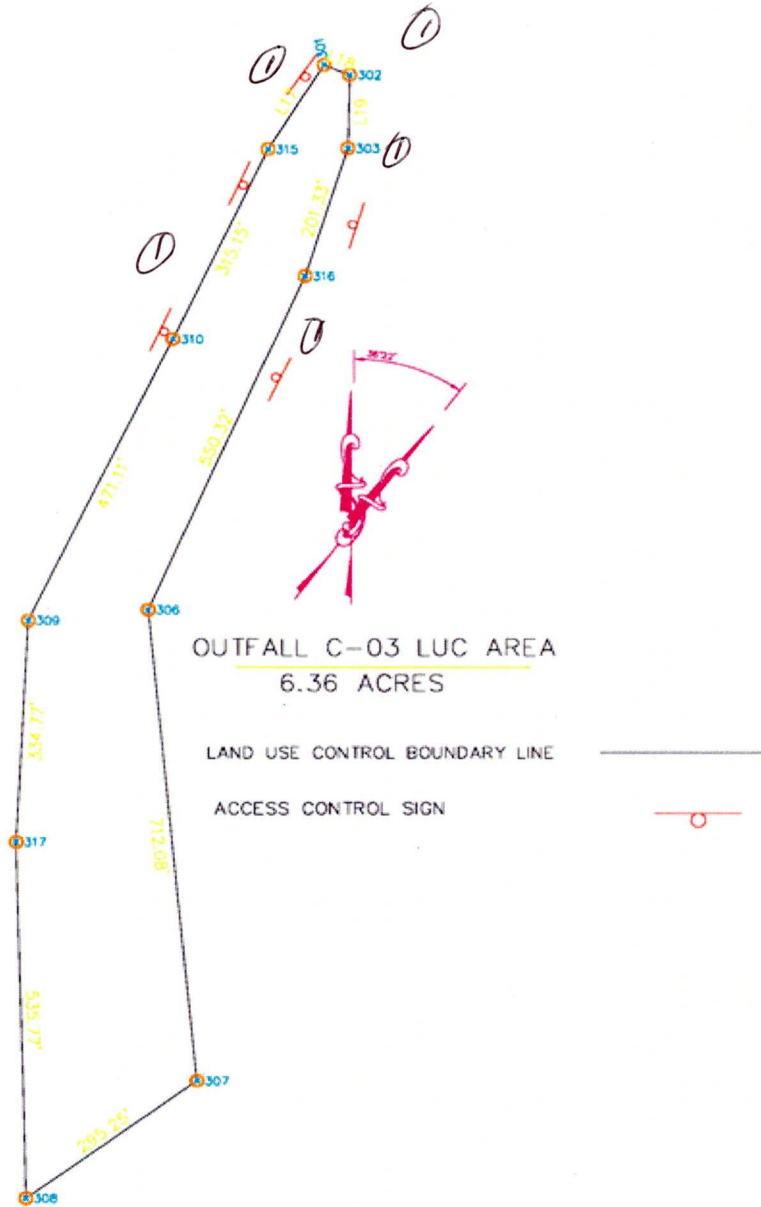
UNSCHEDULED

A = Satisfactory X = Unsatisfactory (Explanation required)	A or X	Observation/Corrective Action Taken
3. Verify there are no unauthorized excavation, digging, or construction activities within the land-use control boundaries.	A	
4. Other		<p style="text-align: center;"><del>NO FURTHER ENTRIES</del></p> <p style="text-align: right;">CPL 3-6-18</p>

Inspected By		
<p>CHARLES P. CARTER <small>(Print Name)</small></p>	<p><i>Charles P. Carter</i> <small>(Signature)</small></p>	<p>3-6-18 <small>(Date)</small></p>

Reviewed By Post-Closure Manager		
<p>George W Joyner <small>(Print Name)</small></p>	<p><i>George W Joyner</i> <small>(Signature)</small></p>	<p>3/14/18 <small>(Date)</small></p>

C-Area Operable Unit Outfall C-03



NOTES: ① = ROADS AND LAND USE BOUNDARIES NEED CUTTING. USES WILL CUT AND CLEAR ROADS AND LAND-USE BOUNDARIES.

~~NO FURTHER ENTRIES~~

CAC - 3-6-18

# POST CLOSURE MAINTENANCE REGISTER

**Index Number**
**Unit Name**

577      OUTFALL C-03 C-AREA OPERABLE UNIT

**Watershed**      FOURMILE BRANCH

AHA #                      AHA-ER-5534

Work Order #              N/A

Work Group                USFS

Priority                      Medium

RCRA                        NO

**Maintenance Number**      PC-2018-00021

Maintenance Status      Complete

Inspection Date              3/6/2018

Chemical Type              NA

Completion Date              3/20/2018

Chemical Name

Amount Used

**Description Of Maintenance Item**

Roads and Land-Use Boundaries need cutting

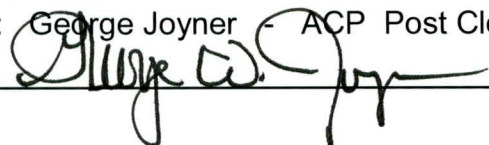
**Maintenance Item Corrected**

USFS cut and cleared roads and land-use boundaries

**Notes**      New observation

Approved by : George Joyner - ACP Post Closure Manager

Signature



Approval date :

5/8/18