

**ENVIRONMENTAL COMPLIANCE & AREA COMPLETION PROJECTS (EC&ACP) STANDARD
OPERATING PROCEDURES, VOL. I**

Manual: C3
 Procedure: ER-IDS-019-012
 Revision: 7
 Effective Date: 09/14/2021
 Type-Class: Checklist
 Page: 1 of 4

K-AREA REACTOR SEEPAGE BASIN (BLDG. 904-65G) FIELD INSPECTION CHECKLIST

WORKING COPY

This document is a Working Copy. Prior to start of work, verify this is the latest revision per the Procedure Index.

Dylon Price _____ 04/18/2024 _____
 Verified By Date

CAUTION

The Inspector will IMMEDIATELY notify the Post-Closure Manager and Environmental Compliance Authority if there has been a breach or compromise of the institutional controls of this waste unit. This notification will be in accordance with Savannah River Site post-closure inspection procedures.

NOTE

1. Manual C3, Volume 1, Procedure ER-SOP-019, Waste Unit and IOU Inspection and Maintenance, is used as a reference for inspection details.
2. Monitoring wells associated with this waste unit are maintained in accordance with Environmental Compliance and Area Completion Projects monitoring well procedures.
3. Steps in this checklist may be completed concurrently or in any order.

SCHEDULED

UNSCHEDULED

A = Satisfactory X = Unsatisfactory (Explanation required)		A or X	Observation/Corrective Action Taken
1.	VERIFY roads are accessible.	A	
2.	VERIFY waste unit signs (4) and subsurface process piping signs (5) are in acceptable condition, have correct information, and are legible from a distance of 25 feet.	A	

K-Area Reactor Seepage Basin (Bldg. 904-65G) Field Inspection Checklist


Manual: C3
 Procedure: ER-IDS-019-012
 Revision: 7
 Page: 2 of 4

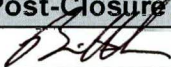
SCHEDULED UNSCHEDULED

A = Satisfactory		A or X	Observation/Corrective Action Taken
X = Unsatisfactory (Explanation required)			
3.	VERIFY there is no excavating, digging, or construction activity on soil cover or over the subsurface process piping (identified by signs).	A	
4.	VERIFY no woody vegetation is growing on the soil cover, AND REMOVE OR IDENTIFY as needed.	A	
5.	VISUALLY CHECK vegetative cover for grass density with no bare spots more than 3 feet by 3 feet in area. (The height of vegetation should not impair visual inspection of soil cover. This will be determined by the Inspector.)	A	
6.	CHECK soil cover for signs of erosion or depressions (subsidence).	A	
7.	CHECK for signs of burrowing animals.	X	Carry over item: Hogs rooting on side slopes of cap. See map note:1. Ref maint. register: PC-2018-00036
8.	VISUALLY INSPECT concrete markers at four corners of basin to ensure their integrity. The markers should be visible and free of damage.	A	
9.	Other NONE	A	

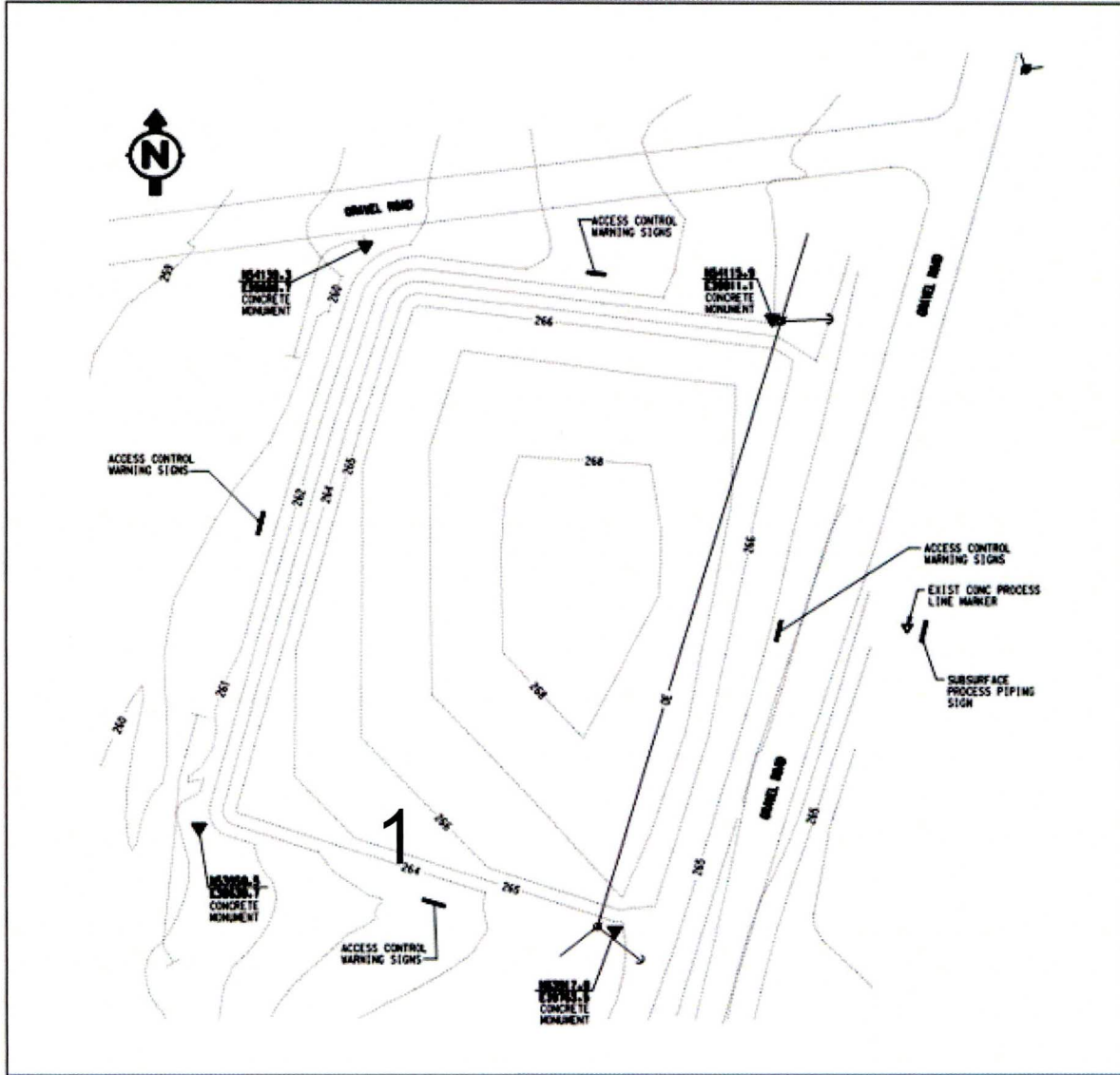
K-Area Reactor Seepage Basin (Bldg. 904-65G) Field Inspection Checklist

Manual: C3
Procedure: ER-IDS-019-012
Revision: 7
Page: 3 of 4

Inspected by		
Dylan Price <i>(Print Name)</i>	 <i>(Signature)</i>	04/18/2024 <i>(Date)</i>

Reviewed by Post-Closure Manager		
Brian Hanshew <i>(Print Name)</i>	 <i>(Signature)</i>	4-22-2024 <i>(Date)</i>

Map of K-Area Reactor Seepage Basin (Bldg. 904-65G)



NOTES: 1= Carry over item: Hogs rooting on side slopes of cap. USFS will repair with topsoil, grass seed and straw.

No further entries

JDP 4-18-24