

**ENVIRONMENTAL COMPLIANCE & AREA COMPLETION PROJECTS (EC&ACP) STANDARD  
OPERATING PROCEDURES, VOL. I**

**Manual:** C3  
**Procedure:** ER-IDS-019-034  
**Revision:** 3  
**Effective Date:** 06/01/2016  
**Type-Class:** Form  
**Page:** 1 of 3

**HEAVY WATER EQUIPMENT WASH BASIN FIELD INSPECTION CHECKLIST**

**WORKING COPY**

This document is a Working Copy. Prior to start of work, verify this is the latest revision per the Procedure Index.

*Charles P. Carter*  
 Verified By

*10-19-18*  
 Date

**CAUTION**

The Inspector shall IMMEDIATELY notify the Post-Closure Manager and Environmental Compliance Authority if there has been a breach or compromise of the institutional controls of this waste unit. This notification shall be in accordance with Savannah River Site post-closure inspection procedures.

**NOTE**

1. Manual C3, ER-SOP-019, *Waste Unit Inspection and Maintenance*, shall be referred to for inspection details.
2. Steps in this checklist may be completed concurrently or in any order.

**SCHEDULED**

**UNSCHEDULED**

A = Satisfactory X = Unsatisfactory (Explanation required)		A or X	Observation/Corrective Action Taken
1.	Verify roads are accessible to closed site.	A	
2.	Verify waste unit signs (4) are in acceptable condition, have correct information, and are legible from a distance of 25 feet.	A	

## Heavy Water Equipment Wash Basin Field Inspection Checklist

Manual: C3  
 Procedure: ER-IDS-019-034  
 Revision: 3  
 Page: 2 of 3

SCHEDULED

UNSCHEDULED

A = Satisfactory X = Unsatisfactory (Explanation required)		A or X	Observation/Corrective Action Taken
3.	Verify monuments are in acceptable condition.	X	NORTH MONUMENT HAS DIRT ERODED FROM AROUND IT. SEE MAP NOTED. REF MAINT REGISTER PL-2018-00113
4.	Other <u>NO FURTHER ENTRIES</u>		CPL 10-19-18

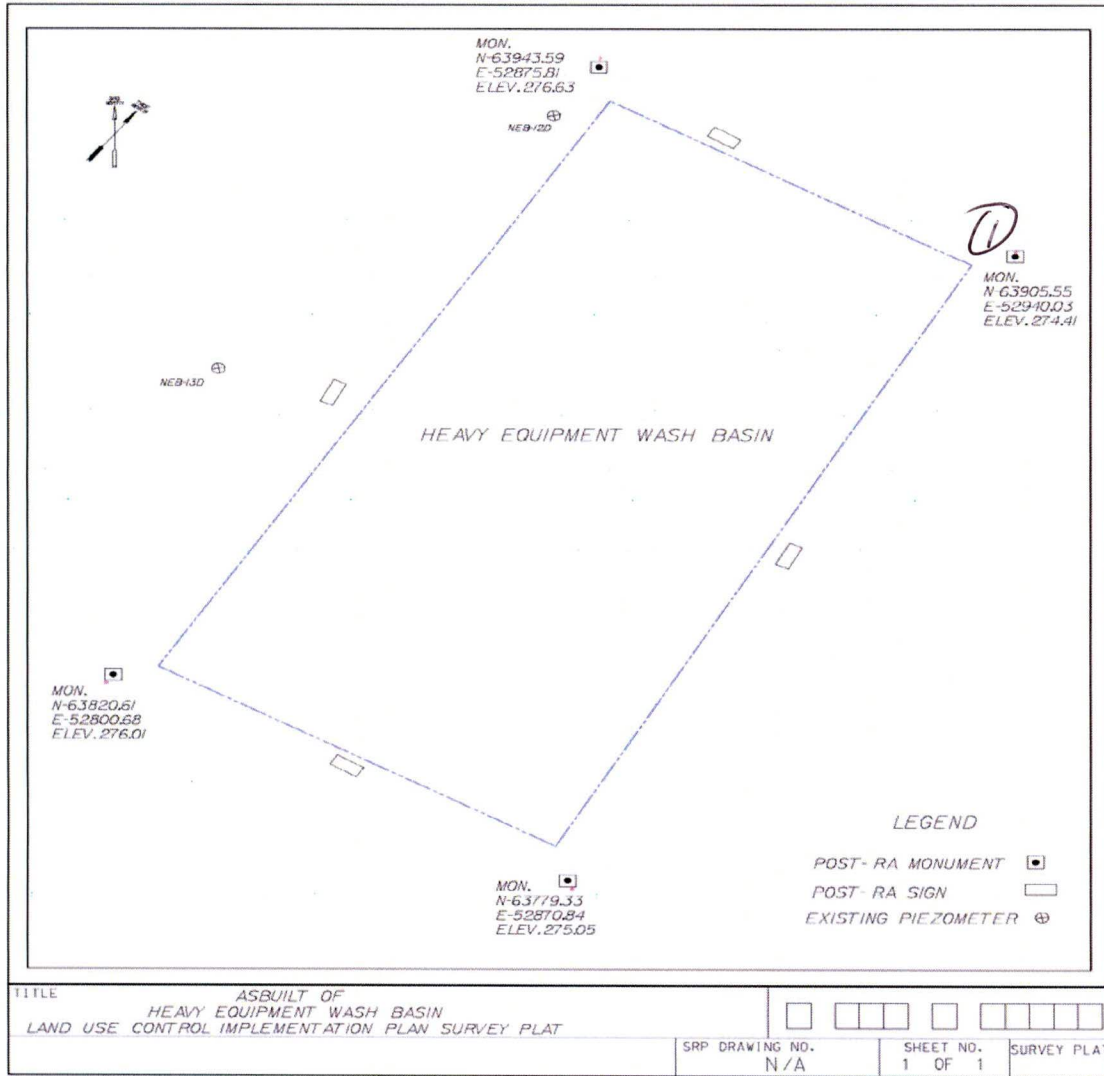
Inspected By		
CHARLES P. CARTER (Print Name)	Charles P. Carter (Signature)	10-19-18 (Date)

Review By Post-Closure Manager		
George Joyner (Print Name)	George Joyner (Signature)	11/1/18 (Date)

Heavy Water Equipment Wash Basin Field Inspection Checklist

Manual: C3  
 Procedure: ER-IDS-019-034  
 Revision: 3  
 Page: 3 of 3

As-Built of Heavy Equipment Wash Basin Land Use Control Implementation Plan Survey Plat



NOTES: NORTH MONUMENT HAS DIRT ERODED FROM AROUND IT. THE MONUMENT IS SOLID AND DOESN'T APPEAR TO HAVE STEPPED. USFS WILL ADD DIRT BAK AROUND THE MONUMENT.

CPL 10-19-18

# POST CLOSURE MAINTENANCE REGISTER

**Index Number**
**Unit Name**

502 HEAVY EQUIPMENT WASH BASIN

**Watershed** FOURMILE BRANCH

AHA #	NA
Work Order #	N/A
Work Group	USFS
Priority	Medium
RCRA	NO

<b>Maintenance Number</b>	PC-2018-00113	<b>Maintenance Status</b>	Complete
Inspection Date	10/19/2018	<b>Chemical Type</b>	NA
Completion Date	12/5/2018	<b>Chemical Name</b>	
		<b>Amount Used</b>	

**Description Of Maintenance Item**

The North survey monument has dirt eroded from around it.

**Maintenance Item Corrected**

US Forest Service will add dirt and gravel around monument.

**Notes** New observation

Approved by : George Joyner - ACP Post Closure Manager

Signature



Approval date :

1/3/19