

**ENVIRONMENTAL COMPLIANCE & AREA COMPLETION PROJECTS (EC&ACP) STANDARD OPERATING PROCEDURES, VOL. I**

Manual: C3  
 Procedure: ER-IDS-019-077  
 Revision: 1  
 Effective Date: 03/27/2018  
 Type-Class: Checklist  
 Page: 1 of 3

**D-AREA ASH BASIN (488-2D) AND ASH LANDFILL (488-4D) INTERIM FIELD INSPECTION CHECKLIST**

**WORKING COPY**

This document is a Working Copy. Prior to start of work, verify this is the latest revision per the Procedure Index.

*CHARLES P. CARTER*

Verified By

*8-7-18*

Date

**CAUTION**

The Inspector shall IMMEDIATELY notify the Post-Closure Manager and Environmental Compliance Authority if there has been a breach or compromise of the institutional controls of this waste unit. This notification shall be in accordance with Savannah River Site post closure inspection procedures.

**NOTE**

1. Manual C3, Vol. I, ER-SOP-019, Waste Unit Inspection and Maintenance, shall be referred to for inspection details.
2. Steps in this checklist may be completed concurrently or in any order.
3. Monitoring wells associated with this waste unit are maintained in accordance with EC&ACP monitoring well procedures.

**SCHEDULED**

**UNSCHEDULED**

| A = Satisfactory | X = Unsatisfactory (Explanation required)   | A or X | Observation/Corrective Action Taken |
|------------------|---|--------|-------------------------------------|
| 1.               | Verify roads are accessible.  | A      |                                     |
| 2.               | Verify there are no excavations, digging, or construction activities (excluding irrigation) on the D-Area Basin (488-2D) and Ash Landfill (488-4D) cover system.                                      | A      |                                     |
| 3.               | Verify the integrity of drainage systems and required land grading for proper drainage is maintained and they are free of excessive erosion, sediment buildup, and any debris restricting water flow. | A      |                                     |

D-Area Ash Basin (488-2D) and Ash Landfill (488-4D) Interim Field Inspection Checklist

Manual: C3  
 Procedure: ER-IDS-019-077  
 Revision: 1  
 Page: 2 of 3

SCHEDULED

UNSCHEDULED

| A = Satisfactory                          |   | A or X | Observation/Corrective Action Taken  |
|---|---|--------|--|
| X = Unsatisfactory (Explanation required) |   |        |  |
| 4.  | Verify no woody vegetation is growing on the D-Area Ash Basin (488-2D) and Ash Landfill (488-4D) cover system.  | A      |  |
| 5.  | Verify grass density of the vegetation cover has no bare spots more than 3 feet by 3 feet in area. The height of the vegetative cover should not impair the visual inspection of the soil cover. This verification will be determined by the inspector. | A      |  |
| 6.  | Verify the soil cover at D-Area Ash Basin (488-2D) and Ash Landfill (488-4D) has no signs of unacceptable erosion or depressions (subsidence).  | X      | CARRY OVER ITEM: SPOTS OF EROSION ON THE SIDE SLOPES OF 488-4D. SEE MAP NOTE: (1). REF. MAINT. REGISTER PL-2017-00094                                    |
| 7.  | Verify signs of burrowing animals on the D-Area Ash Basin (488-2D) and Ash Landfill (488-4D) are not present.   | X      | HOGS ROOTING ON THE SIDE SLOPES + DRAINAGE DITCH OF 488-4D. MINOR HOE DAMAGE ON THE FLOOR OF 488-2D. SEE MAP NOTE (2). REF. MAINT REGISTER PL-2018-00091 |
| 8.  | Other   |        |  |
| <i>NO FURTHER ENTRIES</i>                 |   |        | <i>CPC 8-7-18</i>  |

Inspected By:

|  |                                 |                       |
|--|---------------------------------|-----------------------|
| <i>CHARLES P. CARTER</i><br>Print Name | <i>[Signature]</i><br>Signature | <i>8-7-18</i><br>Date |
|--|---------------------------------|-----------------------|

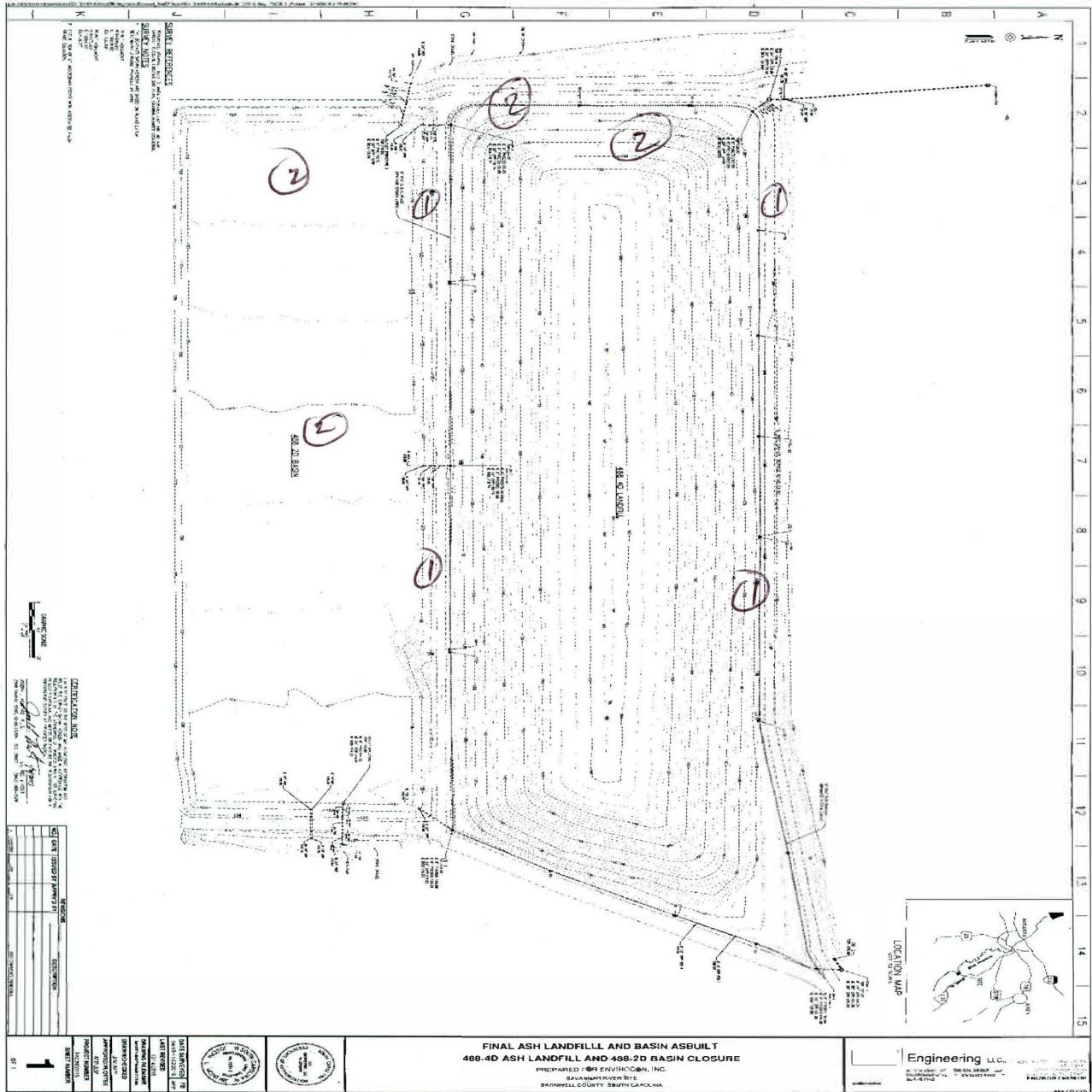
Reviewed By Post Closure Manager:

|                                      |                                 |                       |
|--------------------------------------|---------------------------------|-----------------------|
| <i>George W Joyner</i><br>Print Name | <i>[Signature]</i><br>Signature | <i>9/6/18</i><br>Date |
|--------------------------------------|---------------------------------|-----------------------|

D-Area Ash Basin (488-2D) and Ash Landfill (488-4D) Interim Field Inspection Checklist

Manual: C3  
 Procedure: ER-IDS-019-077  
 Revision: 1  
 Page: 3 of 3

D-Area Ash Basin (488-2D) and Ash Landfill (488-4D) Map



NOTE: (1) = CARRY OVER ITEM: SPOTS OF EROSION ON THE SIDE SLOPES OF 488-4D. USFS WILL MAKE REPAIRS.  
 (2) = HOGS ROOTING ON THE SIDE SLOPES + DRAINAGE DITCH OF 488-4D. MINOR HOG DAMAGE ON THE FLOOR OF 488-2D. USFS WILL MAKE REPAIRS. CPL 8-7-18