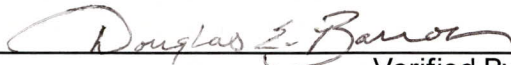


**ENVIRONMENTAL COMPLIANCE & AREA COMPLETION PROJECTS (EC&ACP) STANDARD
OPERATING PROCEDURES, VOL. I**
Manual: C3
Procedure: ER-IDS-019-034
Revision: 4
Effective Date: 12/21/2021
Type-Class: Checklist
Page: 1 of 3
HEAVY WATER EQUIPMENT WASH BASIN FIELD INSPECTION CHECKLIST
WORKING COPY

This document is a Working Copy. Prior to start of work, verify this is the latest revision per the Procedure Index.



 Verified By

10/16/2023

 Date

CAUTION

The Inspector is required to IMMEDIATELY notify the Post-Closure Manager and Environmental Compliance Authority if there has been a breach or compromise of the institutional controls of this waste unit. This notification is required to be in accordance with Savannah River Site post-closure inspection procedures.

NOTE

1. Manual C3, Volume I, Procedure ER-SOP-019, Waste Unit and IOU Inspection and Maintenance, is referenced for inspection details.
2. Steps in this checklist may be completed concurrently or in any order.

 SCHEDULED
 UNSCHEDULED

A = Satisfactory		A or X	Observation/Corrective Action Taken
X = Unsatisfactory (Explanation required)			
1.	VERIFY roads are accessible to closed site.	A	
2.	VERIFY waste unit signs (4) are in acceptable condition, have correct information, and are legible from a distance of 25 feet.	A	

Heavy Water Equipment Wash Basin Field Inspection Checklist

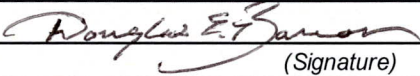
Manual: C3
 Procedure: ER-IDS-019-034
 Revision: 4
 Page: 2 of 3

 SCHEDULED

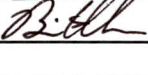
 UNSCHEDULED

A = Satisfactory	A or X	Observation/Corrective Action Taken
X = Unsatisfactory (Explanation required)		
3. VERIFY monuments are visible and in acceptable condition.	A	
4. Other. NO FURTHER ENTRIES		DEB 10/16/2023

Inspected By

Douglas E. Barron (Print Name)	 (Signature)	10/16/2023 (Date)
-----------------------------------	---	----------------------

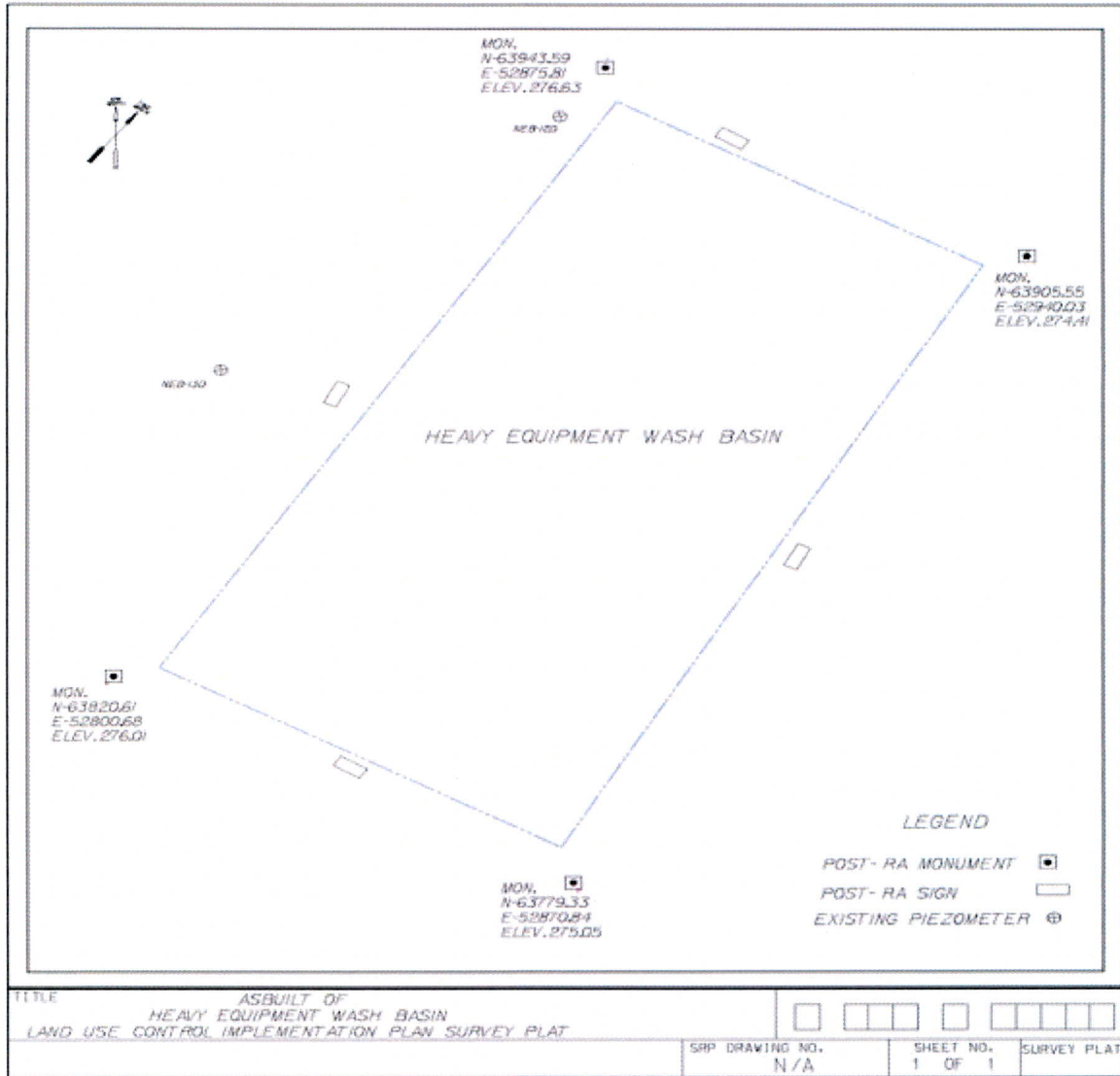
Reviewed By Post-Closure Manager

Brian Hanshew (Print Name)	 (Signature)	10/30/2023 (Date)
-------------------------------	--	----------------------

Heavy Water Equipment Wash Basin Field Inspection Checklist

Manual: C3
Procedure: ER-IDS-019-034
Revision: 4
Page: 3 of 3

As-Built of Heavy Equipment Wash Basin Land Use Control Implementation Plan Survey Plat



NOTES:

NO ENTRIES THIS PAGE