

**ENVIRONMENTAL COMPLIANCE & AREA COMPLETION PROJECTS (EC&ACP) STANDARD
OPERATING PROCEDURES, VOL. I**
Manual: C3
Procedure: ER-IDS-019-072
Revision: 3
Effective Date: 11/15/2017
Type-Class: Checklist
Page: 1 of 3

EARLY ACTION D-AREA OPERABLE UNIT (EADAOU) FIELD INSPECTION CHECKLIST
WORKING COPY

This document is a Working Copy. Prior to start of work, verify this is the latest revision per the Procedure Index.

Charles P. Carter
 Verified By

6-19-18
 Date

CAUTION

The Inspector shall IMMEDIATELY notify the Post-Closure Manager and Environmental Compliance Authority if there has been a breach or compromise of the institutional controls of this waste unit. This notification shall be in accordance with Savannah River Site post closure inspection procedures.

NOTE

1. Manual C3, ER-SOP-019, Waste Unit Inspection and Maintenance, shall be referred to for inspection details.
2. Steps in this checklist may be completed concurrently or in any order.


SCHEDULED

UNSCHEDULED

A = Satisfactory X = Unsatisfactory (Explanation required)		A or X	Observation/Corrective Action Taken
1.	Verify roads are accessible.	A	
2.	Verify waste units warning signs (8) are in acceptable condition, have correct information, and are legible from a distance of 25 feet.	X	WASTE UNIT WARNING SIGNS NEED CUTTING AROUND. SEE MAP NOTE (D). REF. MAINT. REGISTER PC-2018-00059

Early Action D-Area Operable Unit (EADAOU) Field Inspection Checklist

Manual: C3
 Procedure: ER-IDS-019-072
 Revision: 3
 Page: 2 of 3

SCHEDULED

UNSCHEDULED

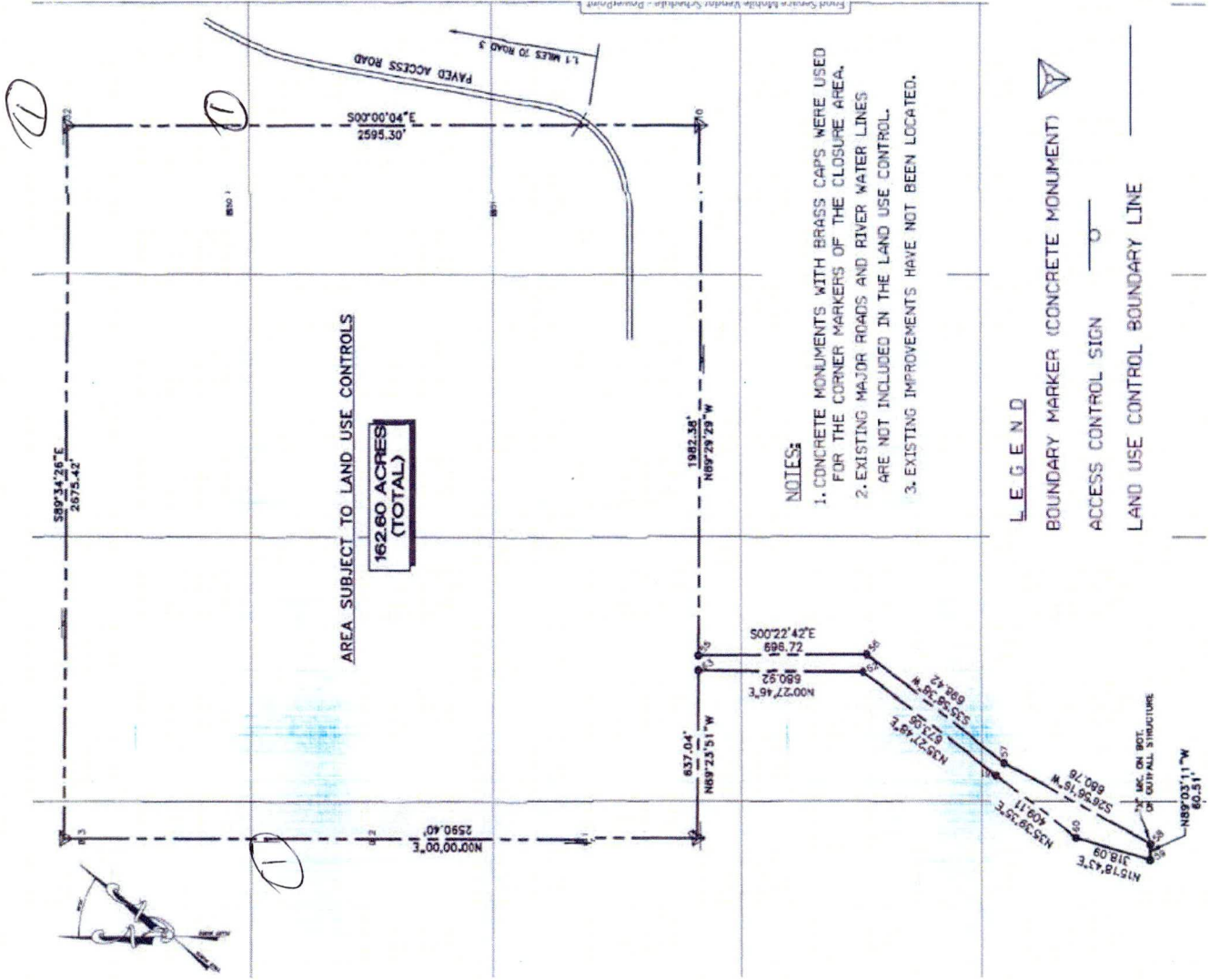
A = Satisfactory X = Unsatisfactory (Explanation required)	A or X	Observation/Corrective Action Taken
3. Verify there are no unauthorized excavation, digging, or construction activities within land use control boundaries.	A	
4. Other		CPC 6-19-18

NO FURTHER ENTRIES

Inspected By		
<i>Charles P. Carter</i> <small>Print Name</small>	<i>Charles P. Carter</i> <small>Signature</small>	6-19-18 <small>Date</small>

Reviewed By Post Closure Manager		
<i>George W. Joyner</i> <small>Print Name</small>	<i>George W. Joyner</i> <small>Signature</small>	6/25/18 <small>Date</small>

Map of Early Action D-Area Operable Unit (EADAOU)



NOTES:
 1. CONCRETE MONUMENTS WITH BRASS CAPS WERE USED FOR THE CORNER MARKERS OF THE CLOSURE AREA.
 2. EXISTING MAJOR ROADS AND RIVER WATER LINES ARE NOT INCLUDED IN THE LAND USE CONTROL.
 3. EXISTING IMPROVEMENTS HAVE NOT BEEN LOCATED.

LEGEND
 BOUNDARY MARKER (CONCRETE MONUMENT)
 ACCESS CONTROL SIGN
 LAND USE CONTROL BOUNDARY LINE

NOTES: ① = WASTE UNIT WARNING SIGNS NEEDS CUTTING AROUND. USFS WILL CUT AROUND SIGNS.

~~NO FURTHER ENTRIES~~

CPL 6-19-18

POST CLOSURE MAINTENANCE REGISTER

Index Number**Unit Name**

1212 EARLY ACTION D-AREA OPERABLE UNIT (EADAOU) FIELD INSPECTION CHECKLIST

1214

1215

1218 1250

Watershed SAVANNAH RIVER FLOOD PLAIN

AHA # NA
Work Order # N/A
Work Group USFS
Priority Medium
RCRA NO

Maintenance Number PC-2018-00059 **Maintenance Status** Complete
Inspection Date 6/19/2018 **Chemical Type**
Completion Date 12/29/2018 **Chemical Name**
Amount Used

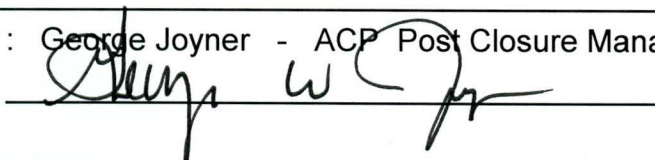
Description Of Maintenance Item
Cut around waste unit signs

Maintenance Item Corrected
US Forest service will cut around signs

Notes New observation.

Approved by : George Joyner - ACP Post Closure Manager

Signature



Approval date :

1/28/19