

**ENVIRONMENTAL COMPLIANCE & AREA COMPLETION PROJECTS (EC&ACP) STANDARD
OPERATING PROCEDURES, VOL. I**
Manual: C3
Procedure: ER-IDS-019-030
Revision: 5
Effective Date: 06/01/2016
Type-Class: Form
Page: 1 of 3
P-AREA BURNING RUBBLE PIT (BLDG. 131-P) FIELD INSPECTION CHECKLIST
WORKING COPY

This document is a Working Copy. Prior to start of work, verify this is the latest revision per the Procedure Index.



Verified By

06/14/2019

Date

CAUTION

The Inspector shall IMMEDIATELY notify the Post-Closure Manager and Environmental Compliance Authority if there has been a breach or compromise of the institutional controls of this waste unit. This notification shall be in accordance with Savannah River Site post-closure inspection procedures.

NOTE

1. Manual C3, ER-SOP-019, *Waste Unit Inspection and Maintenance*, shall be referred to for inspection details.
2. Monitoring wells associated with this waste unit are maintained in accordance with EC&ACP monitoring well procedures.
3. Steps in this checklist may be completed concurrently or in any order.

 SCHEDULED
 UNSCHEDULED

A = Satisfactory X = Unsatisfactory (Explanation required)		A or X	Observation/Corrective Action Taken
1.	Verify roads to waste unit are accessible.	A	
2.	Verify waste unit signs (4) are in acceptable condition, have correct information and are legible from a distance of 25 feet. REFER TO Manual C1, ER-AP-127, <i>ACP Waste Unit Field Inspection and Maintenance</i> .	A	

P-Area Burning Rubble Pit (Bldg. 131-P) Field Inspection Checklist

Manual: C3
 Procedure: ER-IDS-019-030
 Revision: 5
 Page: 2 of 3

SCHEDULED UNSCHEDULED

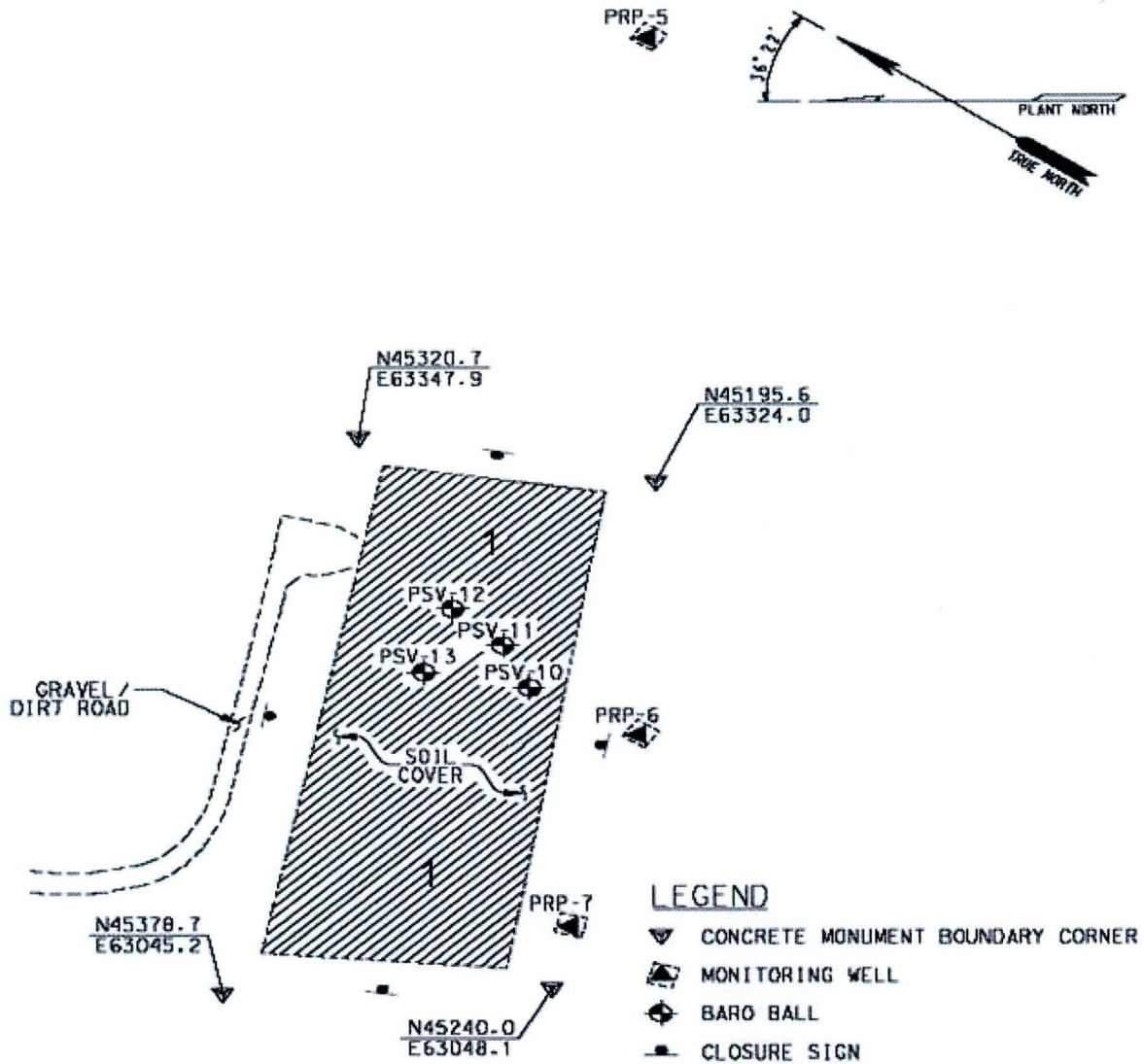
A = Satisfactory X = Unsatisfactory (Explanation required)		A or X	Observation/Corrective Action Taken
3.	Verify there are no unauthorized excavations, digging, or construction activities on soil cover.	A	
4.	Check integrity of drainage ditches for presence of excessive erosion, sediment build-up, and any debris restricting water flow.	A	
5.	Verify no woody vegetation is growing on soil cover. Remove or identify as needed.	A	
6.	Visually check vegetative cover for grass density with no bare spots more than 3 feet by 3 feet in area. The height of vegetative cover should not impair visual inspection of soil cover. This will be determined by the Inspector.	A	
7.	Check soil cover for signs of erosion or depressions (subsidence).	A	
8.	Check for evidence of burrowing animals.	X	Active ant mounds on soil cover. See map note:1 Ref. Maint. Register: PC-2019-00059
9.	Other	NO FURTHER ENTRIES	

CPC 06/14/2019

Inspected By		
Charles P. Carter <i>(Print Name)</i>	<i>Charles P. Carter</i> <i>(Signature)</i>	06/14/2019 <i>(Date)</i>

Review By Post-Closure Manager		
Brian D. Hanshew <i>(Print Name)</i>	<i>B. D. Hanshew</i> <i>(Signature)</i>	06/17/2019 <i>(Date)</i>

Map of P-Area Burning Rubble Pit



NOTES: 1=Active ant mounds on soil cover. Applied 1 lb. of extinguish ant bait.

NO FURTHER ENTRIES

POST CLOSURE MAINTENANCE REGISTER

Index Number

Unit Name

108 P-AREA BURNING/RUBBLE PIT - 131-P

Watershed STEEL CREEK

AHA # NA
Work Order # N/A
Work Group POST CLOSURE MAINTENANCE
Priority Medium
RCRA NO

Maintenance Number PC-2019-00059

Maintenance Status Complete

Inspection Date 6/14/2019

Chemical Type Pesticide

Completion Date 6/14/2019

Chemical Name Extinguish
Amount Used 1.0 Pounds

Description Of Maintenance Item

Active ant mounds on waste unit

Maintenance Item Corrected

Applied Extinguish pesticide

Notes New observation.

Approved by : George Joyner - ACP Post Closure Manager

Signature *Brian Hanshew* For George Joyner per TDA
BRIAN HANSHEW

Approval date : 6-17-19

