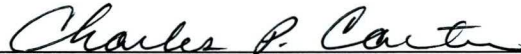


**ENVIRONMENTAL COMPLIANCE & AREA COMPLETION PROJECTS (EC&ACP) STANDARD
OPERATING PROCEDURES, VOL. I**
Manual: C3
Procedure: ER-IDS-019-029
Revision: 4
Effective Date: 06/02/2016
Type-Class: Form
Page: 1 of 3
**A-AREA MISCELLANEOUS RUBBLE PILE OPERABLE UNIT (731-6A) FIELD INSPECTION
CHECKLIST**
WORKING COPY

This document is a Working Copy. Prior to start of work, verify this is the latest revision per the Procedure Index.



Verified By

01/02/2020

Date

CAUTION

The Inspector shall IMMEDIATELY notify the Post-Closure Manager and Environmental Compliance Authority if there has been a breach or compromise of the institutional controls of this waste unit. This notification shall be in accordance with Savannah River Site post-closure inspection procedures.

NOTE

1. Manual C3, ER-SOP-019, *Waste Unit Inspection and Maintenance*, shall be referred to for inspection details.
2. Monitoring wells associated with this waste unit are maintained in accordance with EC&ACP Monitoring Well Procedures.
3. Steps in this checklist may be completed concurrently or in any order.

 SCHEDULED
 UNSCHEDULED

A = Satisfactory X = Unsatisfactory (Explanation required)		A or X	Observation/Corrective Action Taken
1.	Verify roads to waste unit are accessible.	A	
2.	Verify that the waste unit signs (12) are in acceptable condition, have the correct information* and are legible from a distance of 25 feet.	A	

A-Area Miscellaneous Rubble Pile Operable Unit (731-6A) Field Inspection Checklist

Manual: C3
 Procedure: ER-IDS-019-029
 Revision: 4
 Page: 2 of 3

SCHEDULED UNSCHEDULED

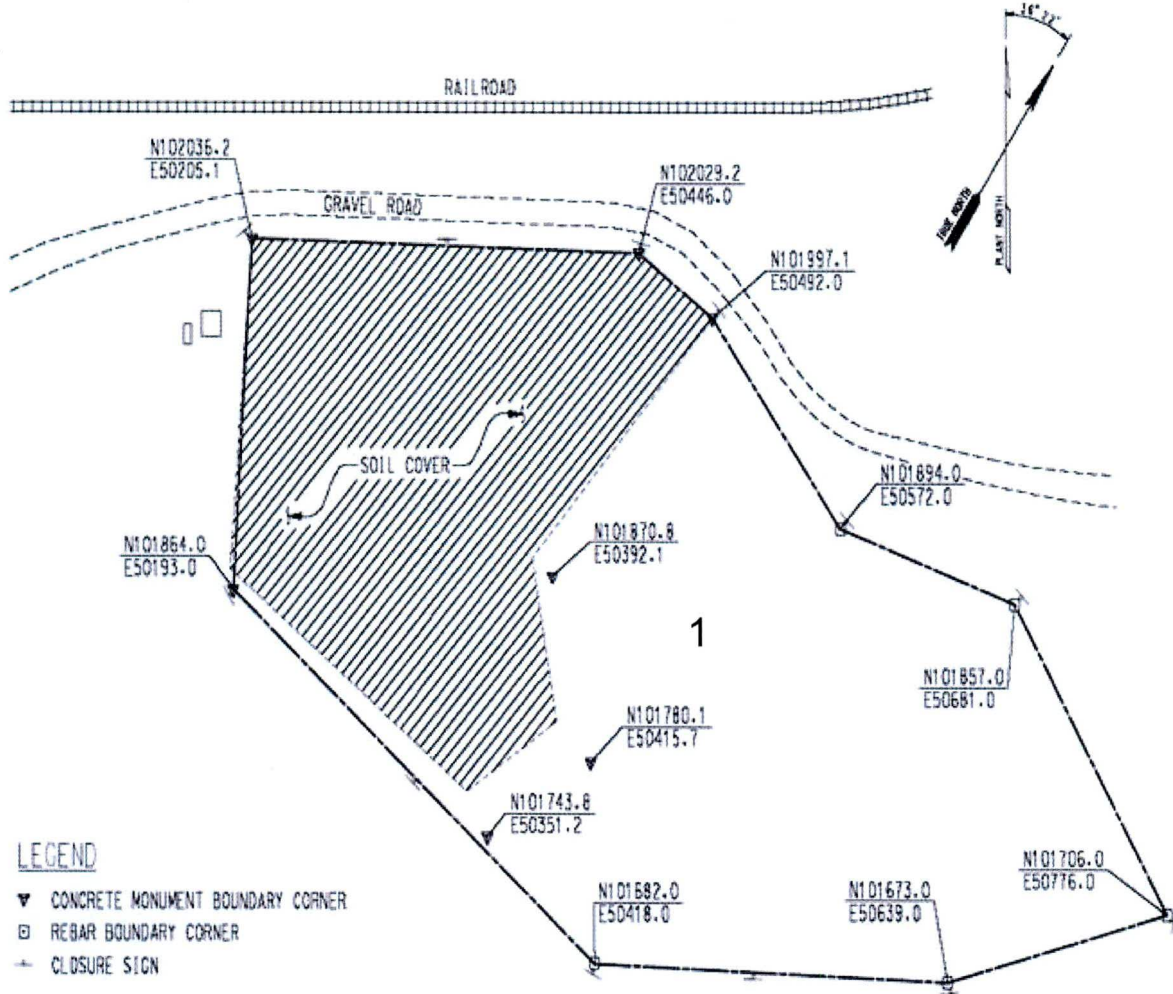
A = Satisfactory X = Unsatisfactory (Explanation required)		A or X	Observation/Corrective Action Taken
3.	Check site for general housekeeping. Remove debris as necessary.	A	
4.	Verify there is no unauthorized digging, excavation or construction activities on the soil cover.	A	
5.	Verify that no woody vegetation is growing on the soil cover. Remove or identify as needed.	A	
6.	Visually check vegetative cover for grass density with no bare spots more than 3 feet by 3 feet in area. The height of the vegetation should not impair the visual inspection of the soil cover. This will be determined by the Inspector.	A	
7.	Check the soil cover for signs of erosion or depressions (subsidence).	A	
8.	Check for signs of burrowing animals.	X	Active ant mounds on soil cover. See map note: 1 Reference Maintenance Register PC-2020-00001
9.	Other	NO FURTHER ENTRIES	

CPC 01/02/2020

Inspected By		
Charles P. Carter <i>(Print Name)</i>	<i>Charles P. Carter</i> <i>(Signature)</i>	01/02/2020 <i>(Date)</i>

Review By Post-Closure Manager		
George W. Joyner <i>(Print Name)</i>	<i>George W. Joyner</i> <i>(Signature)</i>	1/7/2020 <i>(Date)</i>

MAP A-AREA MISCELLANEOUS RUBBLE PILE OPERABLE UNIT (731-6A)



LEGEND

- ▼ CONCRETE MONUMENT BOUNDARY CORNER
- REBAR BOUNDARY CORNER
- CLOSURE SIGN

NOTES: 1=Active ant mounds on soil cover. Applied 1.5 lbs. of Extinguish ant bait.

NO FURTHER ENTRIES

POST CLOSURE MAINTENANCE REGISTER

Index Number

Unit Name

48 A-AREA MISCELLANEOUS RUBBLE PILE - 731-6A

Watershed UPPER THREE RUNS

AHA # NA
Work Order # N/A
Work Group POST CLOSURE MAINTENANCE
Priority Medium
RCRA NO

Maintenance Number PC-2020-00001

Maintenance Status Complete

Inspection Date 1/2/2020

Chemical Type Pesticide

Completion Date 1/2/2020

Chemical Name Extinguish

Amount Used 1.5 Pounds

Description Of Maintenance Item

Active ant mounds on waste unit

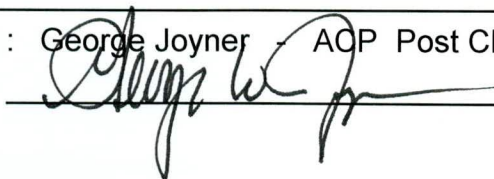
Maintenance Item Corrected

Applied Extinguish pesticide

Notes New observation.

Approved by : George Joyner ACP Post Closure Manager

Signature



Approval date :

1/7/2020