

**ENVIRONMENTAL COMPLIANCE & AREA COMPLETION PROJECTS (EC&ACP) STANDARD
OPERATING PROCEDURES, VOL. I**
Manual: C3
Procedure: ER-IDS-019-036
Revision: 3
Effective Date: 06/01/2016
Type-Class: Form
Page: 1 of 3
**R-AREA BURNING RUBBLE PITS AND RUBBLE PILE OPERABLE PIT REMEDIATION FIELD
INSPECTION CHECKLIST**
WORKING COPY

This document is a Working Copy. Prior to start of work, verify this is the latest revision per the Procedure Index.



Verified By

10/14/2020

Date

CAUTION

The Inspector shall IMMEDIATELY notify the Post-Closure Manager and Environmental Compliance Authority if there has been a breach or compromise of the institutional controls of this waste unit. This notification shall be in accordance with Savannah River Site post-closure inspection procedures.

NOTE

1. Manual C3, ER-SOP-019, *Waste Unit Inspection and Maintenance*, shall be referred to for inspection details.
2. Monitoring wells associated with this waste unit are maintained in accordance with EC&ACP monitoring well procedures.
3. Steps in this checklist may be completed concurrently or in any order.

 SCHEDULED
 UNSCHEDULED

A = Satisfactory		A or X	Observation/Corrective Action Taken
X = Unsatisfactory (Explanation required)			
1.	Verify roads are accessible.	A	
2.	Verify waste unit signs (4) are in acceptable condition, have correct information, and are legible from a distance of 25 feet.	A	

R-Area Burning Rubble Pits and Rubble Pile Operable Pit Remediation Field Inspection Checklist

Manual: C3
 Procedure: ER-IDS-019-036
 Revision: 3
 Page: 2 of 3

 SCHEDULED UNSCHEDULED

A = Satisfactory X = Unsatisfactory (Explanation required)		A or X	Observation/Corrective Action Taken
3.	Verify there is no unauthorized digging, excavation, or construction activities on soil cover.	A	
4.	Check integrity of drainage ditches for presence of excessive erosion, sediment buildup, and any debris restricting water flow.	A	
5.	Verify no woody vegetation is growing on soil cover. Remove or identify as needed.	A	
6.	Visually check vegetative cover for grass density with no bare spots more than 3 feet by 3 feet in area. The height of vegetation should not impair visual inspection of soil cover. This will be determined by the Inspector.	A	
7.	Check closure cover for signs of erosion or depressions (subsidence).	A	
8.	Check for signs of burrowing animals.	X	Active Ant Mounds on soil cover See Map Note:1 Reference Maintenance register: PC-2020-00080
9.	Visually perform a condition check of survey benchmarks for damage and visibility.	A	
10.	Other NO FURTHER ENTRIES		

CPC 10/14/2020

Inspected By

Charles P. Carter
(Print Name)*Charles P. Carter*
(Signature)10/14/2020
(Date)

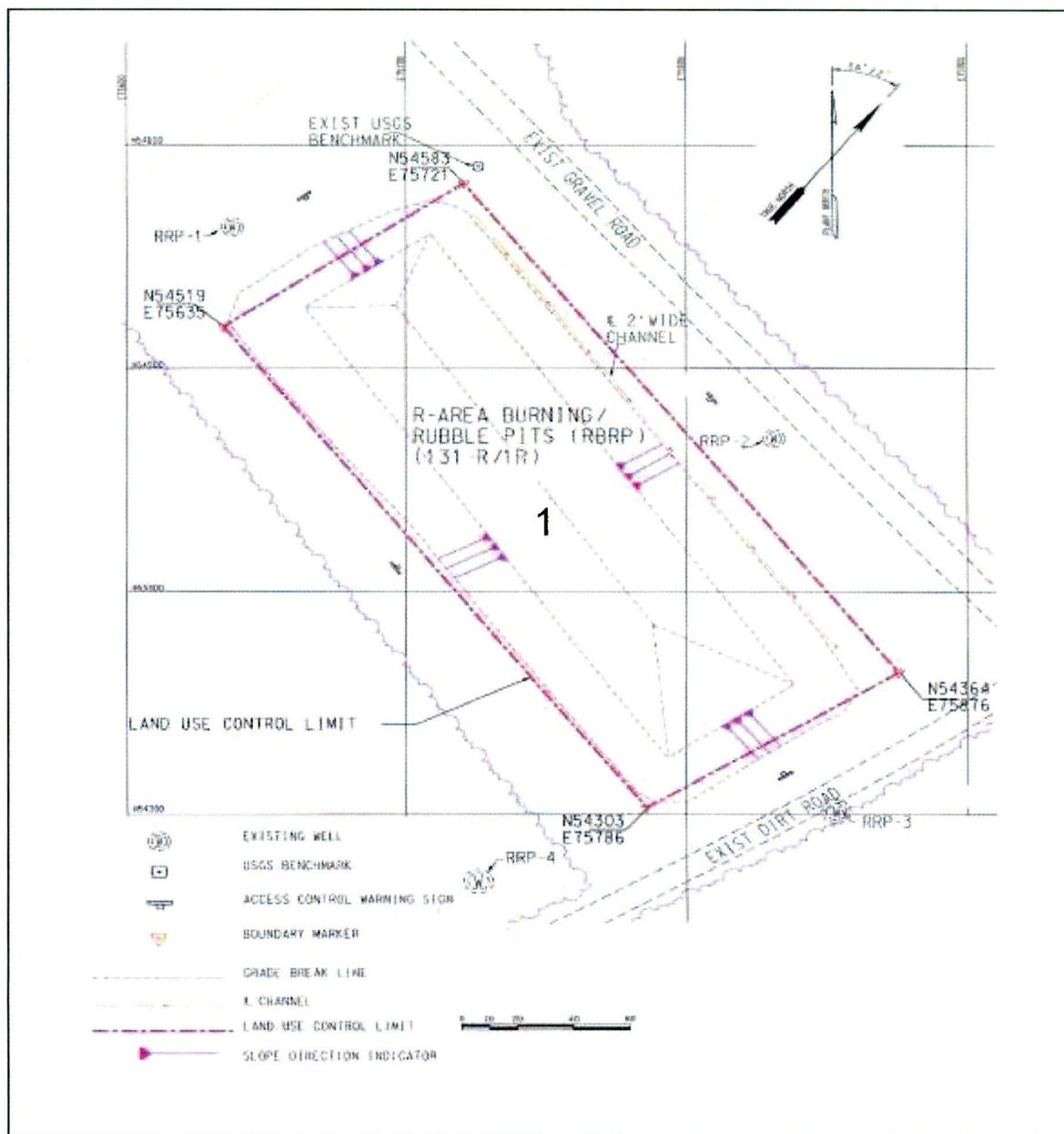
Review By Post-Closure Manager

George W. Joyner
(Print Name)*George W. Joyner*
(Signature)10/14/2020
(Date)

R-Area Burning Rubble Pits and Rubble Pile Operable Pit Remediation Field Inspection Checklist

Manual: C3
Procedure: ER-IDS-019-036
Revision: 3
Page: 3 of 3

R-Area Burning Rubble Pits and Rubble Pile Operable Pit Remediation



NOTES: 1=Active Ant Mounds on soil cover. Applied 1.0 lb. of Extinguish Ant Bait.

NO FURTHER ENTRIES

