

ARF-022678

ENVIRONMENTAL COMPLIANCE & AREA COMPLETION PROJECTS (EC&ACP) STANDARD OPERATING PROCEDURES, VOL. I

Manual: C3
Procedure: ER-IDS-019-036
Revision: 3
Effective Date: 06/01/2016
Type-Class: Form
Page: 1 of 3

R-AREA BURNING RUBBLE PITS AND RUBBLE PILE OPERABLE PIT REMEDIATION FIELD INSPECTION CHECKLIST

WORKING COPY

This document is a Working Copy. Prior to start of work, verify this is the latest revision per the Procedure Index.

Charles P. Carter
Verified By

10/31/2019
Date

CAUTION

The Inspector shall IMMEDIATELY notify the Post-Closure Manager and Environmental Compliance Authority if there has been a breach or compromise of the institutional controls of this waste unit. This notification shall be in accordance with Savannah River Site post-closure inspection procedures.

NOTE

1. Manual C3, ER-SOP-019, *Waste Unit Inspection and Maintenance*, shall be referred to for inspection details.
2. Monitoring wells associated with this waste unit are maintained in accordance with EC&ACP monitoring well procedures.
3. Steps in this checklist may be completed concurrently or in any order.

SCHEDULED

UNSCHEDULED

| A = Satisfactory | | A or X | Observation/Corrective Action Taken |
|-------------------------------------------|--------------------------------------------------------------------------------------------------------------------------------|--------|-------------------------------------|
| X = Unsatisfactory (Explanation required) | | | |
| 1. | Verify roads are accessible. | A | |
| 2. | Verify waste unit signs (4) are in acceptable condition, have correct information, and are legible from a distance of 25 feet. | A | |

R-Area Burning Rubble Pits and Rubble Pile Operable Pit Remediation Field Inspection Checklist

Manual: C3
 Procedure: ER-IDS-019-036
 Revision: 3
 Page: 2 of 3

SCHEDULED UNSCHEDULED

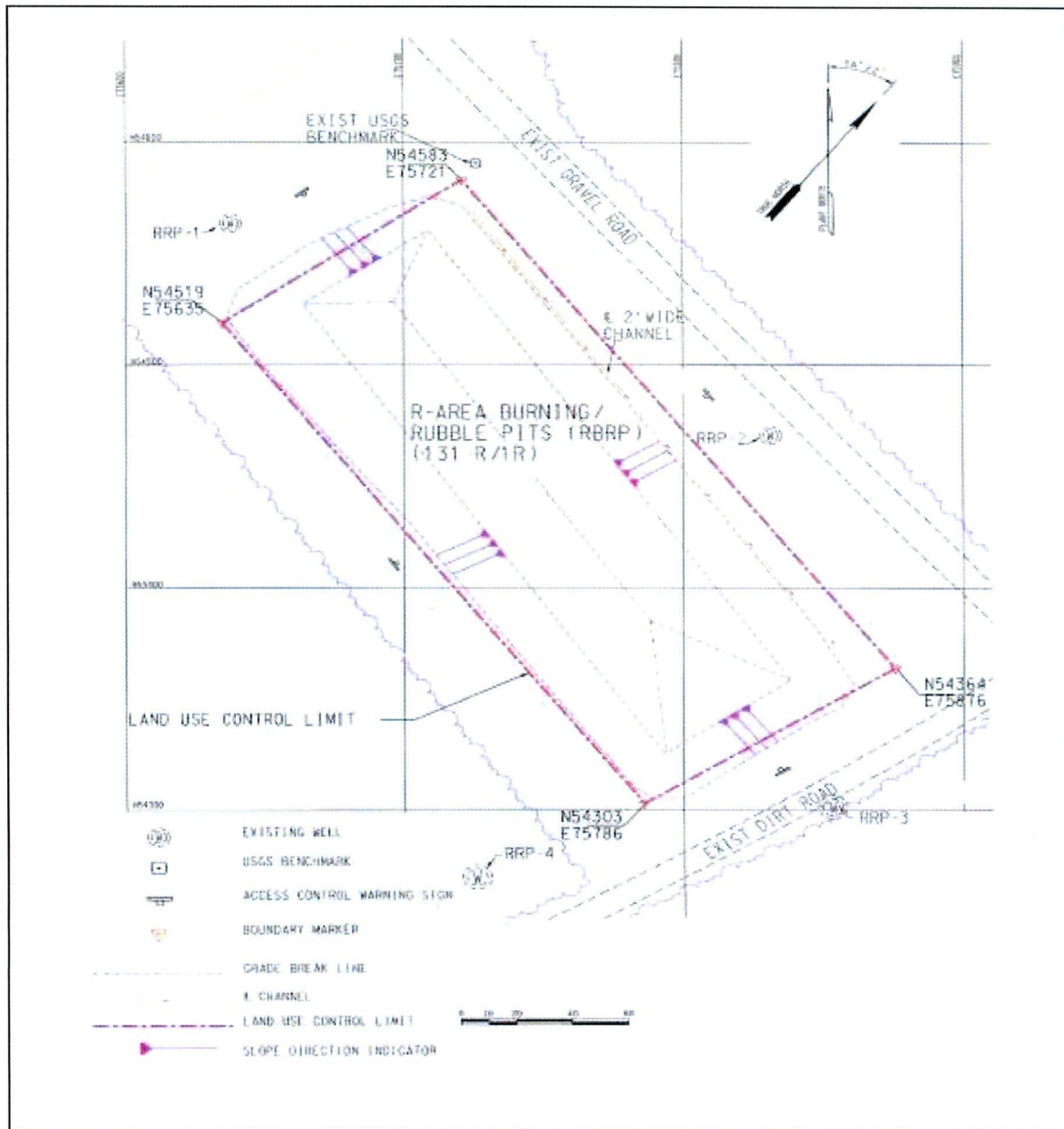
| A = Satisfactory X = Unsatisfactory (Explanation required) | | A or X | Observation/Corrective Action Taken |
|---------------------------------------------------------------|--------------------------------------------------------------------------------------------------------------------------------------------------------------------------------------------------------------------------------|---------------------------|-------------------------------------|
| 3. | Verify there is no unauthorized digging, excavation, or construction activities on soil cover. | A | |
| 4. | Check integrity of drainage ditches for presence of excessive erosion, sediment buildup, and any debris restricting water flow. | A | |
| 5. | Verify no woody vegetation is growing on soil cover. Remove or identify as needed. | A | |
| 6. | Visually check vegetative cover for grass density with no bare spots more than 3 feet by 3 feet in area. The height of vegetation should not impair visual inspection of soil cover. This will be determined by the Inspector. | A | |
| 7. | Check closure cover for signs of erosion or depressions (subsidence). | A | |
| 8. | Check for signs of burrowing animals. | A | |
| 9. | Visually perform a condition check of survey benchmarks for damage and visibility. | A | |
| 10. | Other | NO FURTHER ENTRIES | |

CPC 10/31/2019

| Inspected By | | |
|------------------------------------------|------------------------------------------------|-----------------------------|
| Charles P. Carter <i>(Print Name)</i> | <i>Charles P. Carter</i> <i>(Signature)</i> | 10/31/2019 <i>(Date)</i> |

| Review By Post-Closure Manager | | |
|-----------------------------------------|-----------------------------------------------|--------------------------|
| George W. Joyner <i>(Print Name)</i> | <i>George W. Joyner</i> <i>(Signature)</i> | 11/4/19 <i>(Date)</i> |

R-Area Burning Rubble Pits and Rubble Pile Operable Pit Remediation



NOTES: _____

~~NO ENTRIES THIS PAGE~~