

**ENVIRONMENTAL COMPLIANCE & AREA COMPLETION PROJECTS (EC&ACP) STANDARD  
OPERATING PROCEDURES, VOL. I**
**Manual: C3**  
**Procedure: ER-IDS-019-024**  
**Revision: 6**  
**Effective Date: 01/22/2019**  
**Type-Class: Checklist**  
**Page: 1 of 3**
**FORD BUILDING SEEPAGE BASIN OPERABLE UNIT (BLDG. 904-91G) FIELD INSPECTION  
CHECKLIST**
**WORKING COPY**

This document is a Working Copy. Prior to start of work, verify this is the latest revision per the Procedure Index.



Verified By

12/07/2022

Date

**CAUTION**

The Inspector shall IMMEDIATELY notify the Post-Closure Manager and Environmental Compliance Authority if there has been a breach or compromise of the institutional controls of this waste unit. This notification shall be in accordance with Savannah River Site post-closure inspection procedures.

**NOTE**

1. Manual C3, Vol. I, ER-SOP-019, Waste Unit Inspection and Maintenance, shall be referred to for inspection details.
2. Monitoring wells associated with this waste unit are maintained in accordance with EC&ACP monitoring well procedures.
3. Steps in this checklist may be completed concurrently or in any order.

 **SCHEDULED**
 **UNSCHEDULED**

<b>A = Satisfactory</b> <b>X = Unsatisfactory (Explanation required)</b>		A or X	Observation/Corrective Action Taken
1.	Verify roads are accessible.	A	
2.	Verify waste unit signs (4) are in acceptable condition, have correct information and are legible from a distance of 25 feet.	A	
3.	Verify there is <b>no</b> excavating, digging, or construction activity on soil cover.	A	

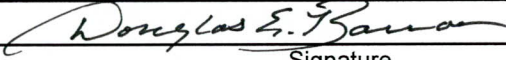
Ford Building Seepage Basin Operable Unit (Bldg. 904-91G) Field Inspection Checklist

Manual: C3  
 Procedure: ER-IDS-019-024  
 Revision: 6  
 Page: 2 of 3

SCHEDULED  UNSCHEDULED

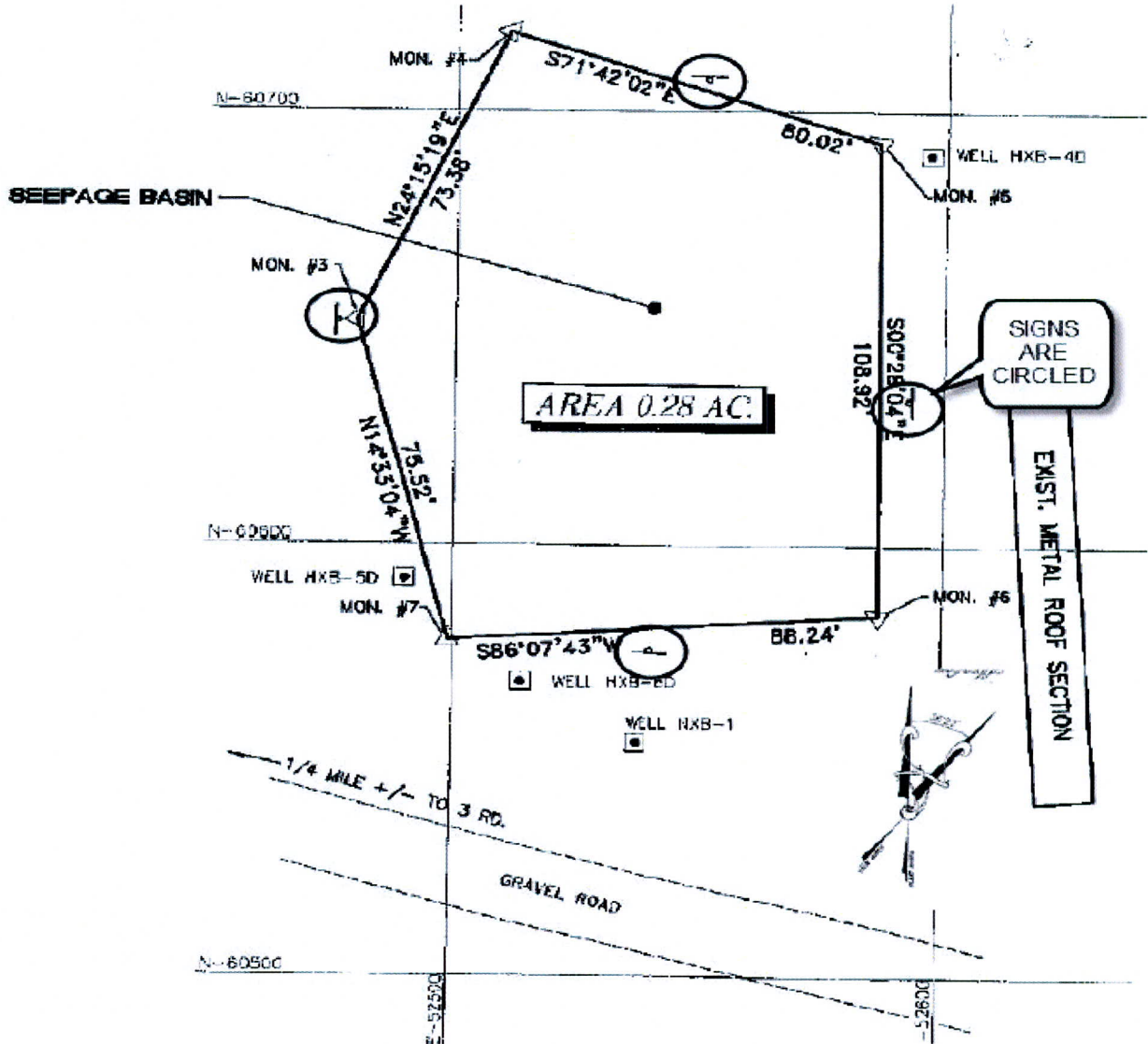
A = Satisfactory X = Unsatisfactory (Explanation required)	A or X	Observation/Corrective Action Taken
4. Verify <b>no</b> woody vegetation is growing on the soil cover. Remove or identify as needed.	A	
5. Visually check vegetative cover for grass density with <b>no</b> bare spots more than 3 feet by 3 feet in the area. The height of vegetation should <b>not</b> impair visual inspection of the soil cover. This will be determined by the Inspector.	A	
6. Check soil cover for signs of erosion or depressions (subsidence).	A	
7. Check for signs of burrowing animals.	A	
8. Other	<div style="font-size: 2em; font-weight: bold;">NO FURTHER ENTRIES</div>	

DEC 12/07/2022

Inspected By		
Douglas E. Barron Print Name	 Signature	12/07/2022 Date

Review By Post-Closure Manager		
Brian Hanshew Print Name	 Signature	12-13-2022 Date

Map of Ford Building Seepage Basin Operable Unit (Bldg. 904-91G)



NOTES:

NO ENTRIES THIS PAGE

DEB 12/07/2022