

**ENVIRONMENTAL COMPLIANCE & AREA COMPLETION PROJECTS (EC&ACP) STANDARD  
OPERATING PROCEDURES, VOL. I**

 Manual: C3  
 Procedure: ER-IDS-019-002  
 Revision: 8  
 Effective Date: 06/01/2016  
 Type-Class: Form  
 Page: 1 of 3

**F-AREA BURNING/RUBBLE PITS 231-F, 231-1F AND 231-2F FIELD INSPECTION CHECKLIST**
**WORKING COPY**

This document is a Working Copy. Prior to start of work, verify this is the latest revision per the Procedure Index.

*Charles P. Carter*

Verified By

7-19-18

Date

**CAUTION**

The Inspector shall IMMEDIATELY notify the Post-Closure Manager and Environmental Compliance Authority if there has been a breach or compromise of the institutional controls of this waste unit. This notification shall be in accordance with Savannah River Site post-closure inspection procedures.

**NOTE**

1. Manual C3, ER-SOP-019, *Waste Unit Inspection and Maintenance*, may be referred to for inspection details.
2. Monitoring wells associated with this waste unit are maintained in accordance with EC&ACP monitoring well procedures.
3. Steps in this checklist may be completed concurrently or in any order.

 SCHEDULED

 UNSCHEDULED

<b>A = Satisfactory</b> <b>X = Unsatisfactory (Explanation required)</b>	<b>A or X</b>	<b>Observation/Corrective Action Taken</b>
1. Verify roads to waste unit are accessible.	A	
2. Verify waste unit signs (8) are in acceptable condition, have correct information, and are legible from a distance of 25 feet.  <b>REFER TO</b> Manual C1, ER-AP-127, <i>ACP Waste Unit Field Inspection and Maintenance</i> .	X	TWO (2) WASTE UNIT SIGNS ARE FADED AND NEED REPLACING. SEE MAP NOTE(D). REF. MAINT. Register PC-2018-00076

F-Area Burning/Rubble Pits 231-F, 231-1F And 231-2F Field Inspection Checklist

Manual: C3  
 Procedure: ER-IDS-019-002  
 Revision: 8  
 Page: 2 of 3

SCHEDULED

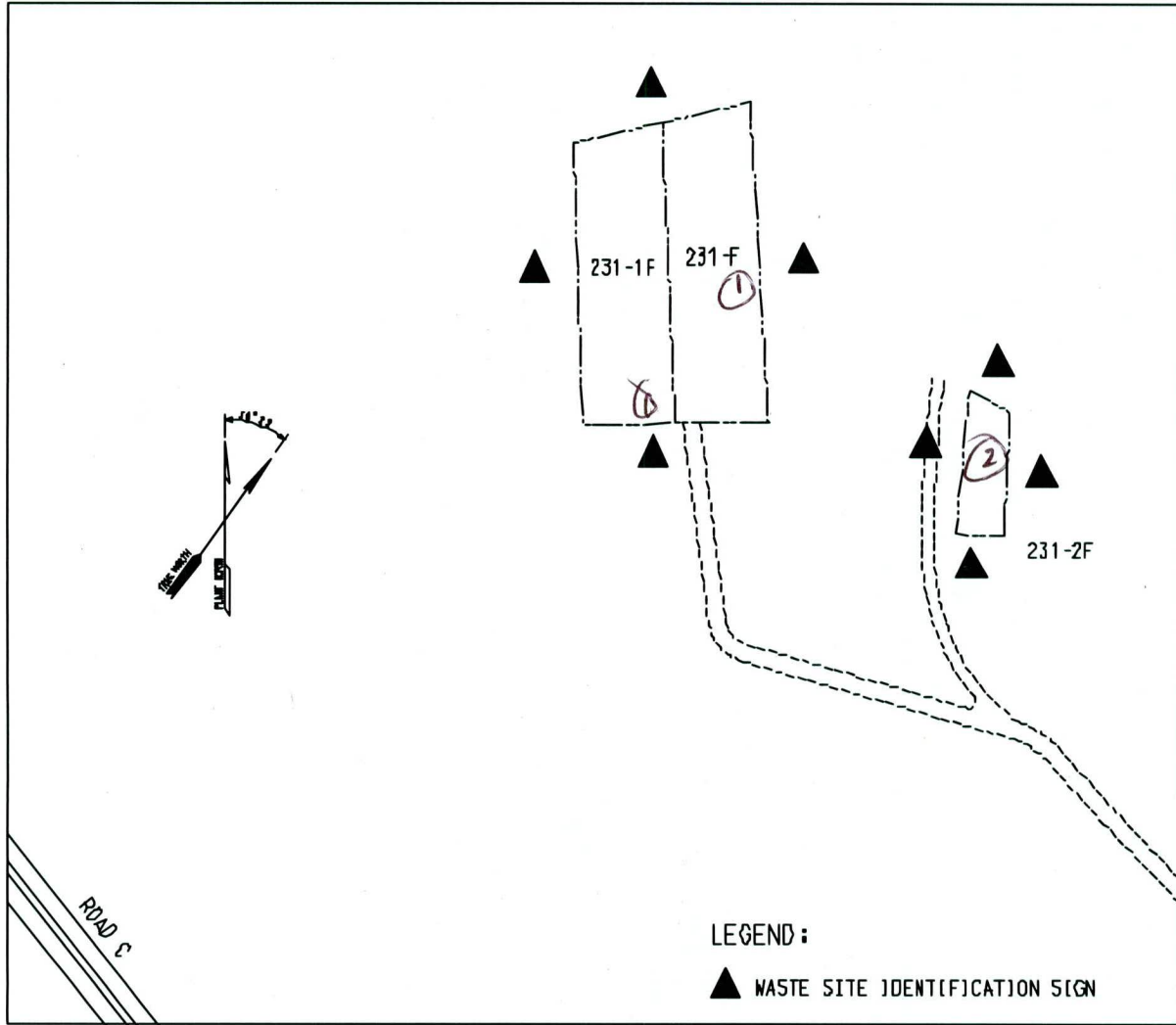
UNSCHEDULED

A = Satisfactory		A or X	Observation/Corrective Action Taken
X = Unsatisfactory (Explanation required)			
3.	Verify there is no excavating, digging, or construction activity on soil cover.	A	
4.	Verify no woody vegetation is growing on soil cover. Remove or identify as needed.	A	
5.	Visually check vegetative cover for grass density with no bare spots more than 3 feet by 3 feet in area. The height of vegetative cover should not impair visual inspection of soil cover. This will be determined by Inspector.	A	
6.	Check soil cover for signs of erosion or depressions (subsidence).	A	
7.	Check for signs of burrowing animals.	X	ACTIVE ANT MOUNDS ON SOIL COVER SEE MAP NOTE ②. REF. MAINT. REGISTER PL-2018-00077
8.	Other. <u>NO FURTHER ENTRIES</u>		CPL 7-19-18

Inspected By		
<u>CHARLES P. CARTER</u> (Print Name)	<u>Charles P. Carter</u> (Signature)	7-19-18 (Date)

Review By Post-Closure Manager		
<u>George Joyner</u> (Print Name)	<u>George W. Joyner</u> (Signature)	8/9/18 (Date)

Map of F-Area Burning/Rubble Pits



NOTES: (1) = TWO (2) WASTE UNIT SIGNS ARE FADED AND NEED REPLACING. SIGN SHOP WILL FABRICATE SIGNS + POST CLOSURE MAINT. WILL INSTALL (2) ACTIVE ANT MOUNDS IN SOIL COVER. APPLIED .5 LBS OF EXTINGUISH ANT BAIT. C.P.C. 7-19-18



