

**ENVIRONMENTAL COMPLIANCE & AREA COMPLETION PROJECTS (EC&ACP) STANDARD  
OPERATING PROCEDURES, VOL. I**
**Manual: C3**  
**Procedure: ER-IDS-019-012**  
**Revision: 7**  
**Effective Date: 09/14/2021**  
**Type-Class: Checklist**  
**Page: 1 of 4**
**K-AREA REACTOR SEEPAGE BASIN (BLDG. 904-65G) FIELD INSPECTION CHECKLIST**
**WORKING COPY**

This document is a Working Copy. Prior to start of work, verify this is the latest revision per the Procedure Index.

*Dylem Price* Verified By 12-6-24 Date

**CAUTION**

The Inspector will IMMEDIATELY notify the Post-Closure Manager and Environmental Compliance Authority if there has been a breach or compromise of the institutional controls of this waste unit. This notification will be in accordance with Savannah River Site post-closure inspection procedures.

**NOTE**

1. Manual C3, Volume 1, Procedure ER-SOP-019, Waste Unit and IOU Inspection and Maintenance, is used as a reference for inspection details.
2. Monitoring wells associated with this waste unit are maintained in accordance with Environmental Compliance and Area Completion Projects monitoring well procedures.
3. Steps in this checklist may be completed concurrently or in any order.

 SCHEDULED

 UNSCHEDULED

<b>A = Satisfactory</b> <b>X = Unsatisfactory (Explanation required)</b>		A or X	Observation/Corrective Action Taken
1.	VERIFY roads are accessible.	A	
2.	VERIFY waste unit signs (4) and subsurface process piping signs (5) are in acceptable condition, have correct information, and are legible from a distance of 25 feet.	A	

**K-Area Reactor Seepage Basin (Bldg. 904-65G) Field Inspection Checklist**

**Manual:** C3  
**Procedure:** ER-IDS-019-012  
**Revision:** 7  
**Page:** 2 of 4

 SCHEDULED

 UNSCHEDULED

<b>A = Satisfactory</b> <b>X = Unsatisfactory (Explanation required)</b>		A or X	Observation/Corrective Action Taken
3.	<b>VERIFY</b> there is no excavating, digging, or construction activity on soil cover or over the subsurface process piping (identified by signs).	A	
4.	<b>VERIFY</b> no woody vegetation is growing on the soil cover, <b>AND REMOVE OR IDENTIFY</b> as needed.	A	
5.	<b>VISUALLY CHECK</b> vegetative cover for grass density with no bare spots more than 3 feet by 3 feet in area. (The height of vegetation should not impair visual inspection of soil cover. This will be determined by the Inspector.)	A	
6.	<b>CHECK</b> soil cover for signs of erosion or depressions (subsidence).	A	
7.	<b>CHECK</b> for signs of burrowing animals.	A	
8.	<b>VISUALLY INSPECT</b> concrete markers at four corners of basin to ensure their integrity. The markers should be visible and free of damage.	A	
9.	Other	A	

**K-Area Reactor Seepage Basin (Bldg. 904-65G) Field Inspection Checklist****Manual:** C3  
**Procedure:** ER-IDS-019-012  
**Revision:** 7  
**Page:** 3 of 4**Inspected by**

<i>Dylan Price</i> (Print Name)	<i>Dylan Price</i> (Signature)	<i>12-6-24</i> (Date)
------------------------------------	-----------------------------------	--------------------------

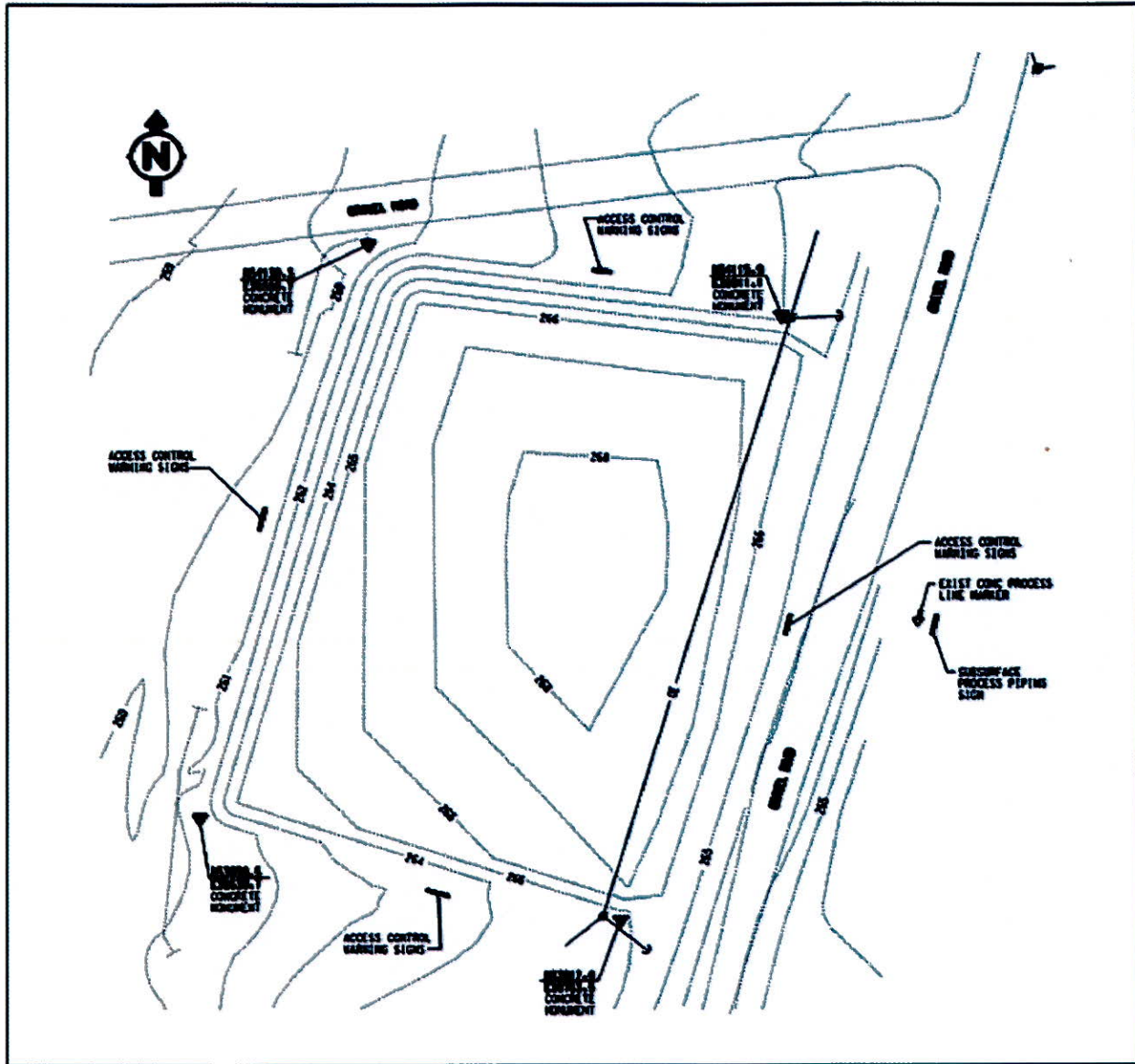
**Reviewed by Post-Closure Manager**

<i>BRIAN HANSKEW</i> (Print Name)	<i>BH</i> (Signature)	<i>12-10-24</i> (Date)
--------------------------------------	--------------------------	---------------------------

**K-Area Reactor Seepage Basin (Bldg. 904-65G) Field  
Inspection Checklist**

**Manual:** C3  
**Procedure:** ER-IDS-019-012  
**Revision:** 7  
**Page:** 4 of 4

**Map of K-Area Reactor Seepage Basin (Bldg. 904-65G)**



NOTES: None

---

---

---

---