


**ENVIRONMENTAL COMPLIANCE & AREA COMPLETION PROJECTS (EC&ACP) STANDARD OPERATING PROCEDURES, VOL. I**

Manual: C3  
 Procedure: ER-IDS-019-020  
 Revision: 6  
 Effective Date: 11/23/2020  
 Type-Class: Checklist  
 Page: 1 of 4

**METALLURGICAL LABORATORY HAZARDOUS WASTE MANAGEMENT FACILITY (HWMF) POST CLOSURE FIELD INSPECTION CHECKLIST**

**WORKING COPY**

This document is a Working Copy. Prior to start of work, verify this is the latest revision per the Procedure Index.


10/18/2024  
 Verified By \_\_\_\_\_ Date \_\_\_\_\_

**CAUTION**

The Inspector will IMMEDIATELY notify the Post-Closure Manager and Environmental Compliance Authority if there has been a breach or compromise of the institutional controls of this waste unit. This notification will be in accordance with Savannah River Site post-closure inspection procedures.

**NOTE**

1. Manual C3, Volume 1, Procedure ER-SOP-019, Waste Unit and IOU Inspection and Maintenance, will be referred to for inspection details.
2. Monitoring wells associated with this waste unit are maintained in accordance with EC&ACP monitoring well procedures located at ACP Homepage.
3. Steps in this checklist may be completed concurrently or in any order.

SCHEDULED
  UNSCHEDULED

A = Satisfactory X = Unsatisfactory (Explanation required)	A or X	Observation/Corrective Action Taken
1. <b>VERIFY</b> roads to waste unit are accessible.	A	
2. <b>VERIFY</b> signs on the fence are in acceptable condition and are legible from a distance of 25 feet. Signs must include "Danger Unauthorized Personnel Keep Out" and include Post Closure Manager and Savannah River Site Operations Center contact information.	X	New signs have been ordered with Post Closure Manager info on them. SEE Map note 1: Reference Maintenance Register: PC-2024-00030

**Metallurgical Laboratory Hazardous Waste Management Facility (HWMF) Post Closure Field Inspection Checklist**

Manual: C3  
 Procedure: ER-IDS-019-020  
 Revision: 6  
 Page: 2 of 4

SCHEDULED                       UNSCHEDULED

A = Satisfactory X = Unsatisfactory (Explanation required)	A or X	Observation/Corrective Action Taken
3. VERIFY fence is in good condition (e.g., shows no signs of serious wear, no vegetative growth) and unattended gates are locked.	A	
4. CHECK the soil cover and side slopes for signs of erosion, depression (subsidence) and evidence of burrowing animals.	A	
5. CHECK the integrity of drainage ditches for the presence of excessive erosion, sediment buildup, and any debris restricting water flow.	X	Removed Thatch/Debris restricting water flow into the drains. See Map note: 2 Reference Maintenance Register: PC-2024-00082 Vegetation needs herbicide applied in A-008 Diversion Ditch. See map note:3 reference maintenance register:PC-2024-00083
6. VERIFY that no woody vegetation is growing on the soil cover, AND REMOVE OR IDENTIFY as needed.	A	
7. VISUALLY CHECK vegetative cover for grass density with no bare spots more than 3 feet by 3 feet in area. The height of the vegetation should not impair visual inspection of the soil cover. This will be determined by the Inspector.	A	
8. VISUALLY PERFORM a condition check of the survey benchmarks for damage and visibility.	A	
9. VERIFY annual topographic/subsidence survey has been performed by end of June for current year, AND VERIFY copies of survey results are in EC&ACP Document Control Center.	A	Completed 06/11/2024  SRNS-J2000-2024-00657


**Metallurgical Laboratory Hazardous Waste Management Facility (HWMF) Post Closure Field Inspection Checklist**

Manual: C3  
 Procedure: ER-IDS-019-020  
 Revision: 6  
 Page: 3 of 4

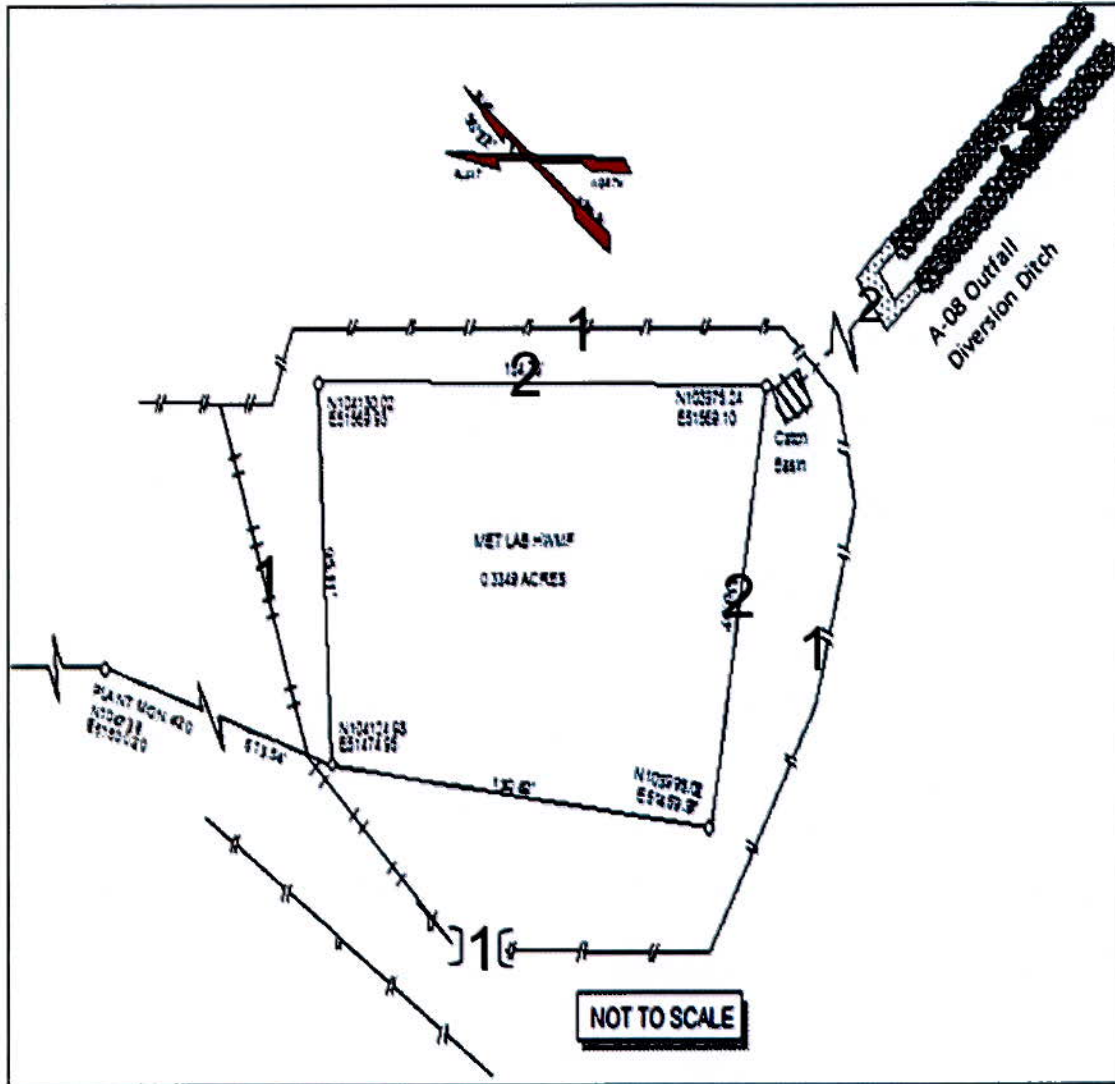
SCHEDULED                       UNSCHEDULED

A = Satisfactory X = Unsatisfactory (Explanation required)		A or X	Observation/Corrective Action Taken
10.	INSPECT A-08 Outfall Diversion Ditch for the presence of erosion and debris restricting water flow.	A	
11.	Other None	A	

Inspected By		
Dylan Price (Print Name)	 (Signature)	10/18/2024 (Date)

Reviewed By Post-Closure Manager		
Brian Hanshew (Print Name)	 (Signature)	10/31/24 (Date)

Map of Metallurgical Laboratory HWMF



**NOTES:** NOTE 1: Ordered new Waste site signs with proper info on it. Maintenance register PC-2024-00030

NOTE 2: Post Closure Maintenance removed thatch/debris restricting water flow into the drains. Maintenance register PC-2024-00082

Note 3: Vegetation needs herbicide applied in A-008 Diversion Ditch. Maintenance register: PC-2024-00083

**Referenced Procedure: ER-SOP-019, 5.1 to perform an unscheduled inspection.**

# POST CLOSURE MAINTENANCE REGISTER

**Index Number**

**Unit Name**

15 METALLURGICAL LABORATORY HAZARDOUS WASTE MANAGEMENT FACILITY - 904-110G

**Watershed** UPPER THREE RUNS

**AHA #** AHA-ER-5534

**Work Order #** N/A

**Work Group** POST CLOSURE MAINTENANCE

**Priority** Medium

**RCRA** YES

**Maintenance Number** PC-2024-00082

**Maintenance Status** Complete

**Inspection Date** 10/18/2024

**Chemical Type** NA

**Completion Date** 10/18/2024

**Chemical Name**

**Amount Used**

**Description Of Maintenance Item**

Thatch / Debris restricting water flow into the drains.

**Maintenance Item Corrected**

Post Closure Maintenance Remved Thatch / Debris restricting water flow into ditches.

**Notes** ER-IDS-019-020

---

Approved by : Brian Hanshaw - ACP Post Closure Manager

Signature



Approval date :

10/31/2024