

ENVIRONMENTAL COMPLIANCE & AREA COMPLETION PROJECTS (EC&ACP) STANDARD OPERATING PROCEDURES, VOL. I

Manual: C3
Procedure: ER-IDS-019-008
Revision: 6
Effective Date: 02/10/2022
Type-Class: Checklist
Page: 1 of 3

OLD F-AREA SEEPAGE BASIN (BLDG. 904-49G) FIELD INSPECTION CHECKLIST

WORKING COPY

This document is a Working Copy. Prior to start of work, verify this is the latest revision per the Procedure Index.

Dylan Price Verified By 08/14/2024 Date

CAUTION

The Inspector is required to IMMEDIATELY notify the Post-Closure Manager and Environmental Compliance Authority if there has been a breach or compromise of the institutional controls of this waste unit. This notification is made in accordance with Savannah River Site post-closure inspection procedures.

NOTE

1. Manual C3, Volume 1, Procedure ER-SOP-019, Waste Unit and IOU Inspection and Maintenance, is referenced for inspection details.
2. Monitoring wells associated with this waste unit are maintained in accordance with Environmental Compliance and Area Completion Projects monitoring well procedures.
3. Steps in this checklist may be completed concurrently or in any order.

SCHEDULED

UNSCHEDULED

A = Satisfactory X = Unsatisfactory (Explanation required)		A or X	Observation/Corrective Action Taken
1.	VERIFY roads are accessible.	A	
2.	VERIFY waste unit signs (4) and underground piping signs (10) are in acceptable condition, have the correct information, and are legible from a distance of 25 feet.	A	

Old F-Area Seepage Basin (Bldg. 904-49G) Field Inspection Checklist

Manual: C3
 Procedure: ER-IDS-019-008
 Revision: 6
 Page: 2 of 3

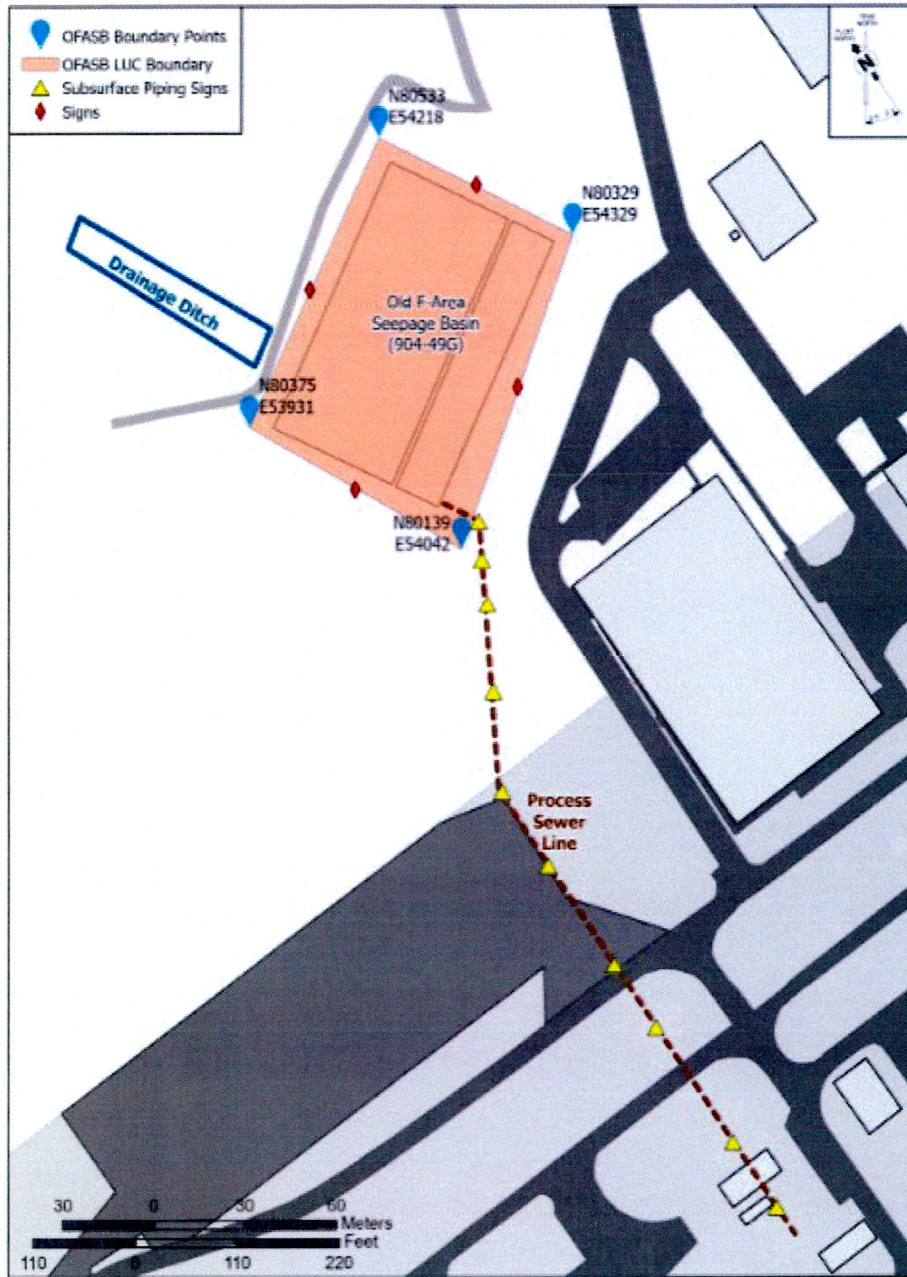
SCHEDULED UNSCHEDULED

A = Satisfactory X = Unsatisfactory (Explanation required)		A or X	Observation/Corrective Action Taken
3.	VERIFY there is no excavating, digging, or construction activity on the soil cover or over the subsurface process piping (identified by signs).	A	
4.	VERIFY no woody vegetation is growing on the soil cover, AND REMOVE OR IDENTIFY as needed.	A	
5.	VISUALLY CHECK vegetative cover for grass density with no bare spots more than 3 feet by 3 feet in area. (The height of the vegetation should not impair the visual inspection of the soil cover. This will be determined by the Inspector.)	A	
6.	CHECK soil cover for signs of erosion or depressions (subsidence).	A	
7.	CHECK for signs of burrowing animals.	A	
8.	VISUALLY INSPECT the concrete markers (benchmarks) to ensure they are visible and not damaged.	A	
9.	CHECK integrity of the drainage ditch for presence of excessive erosion, sediment buildup, and any debris restricting water flow.	A	
10.	Other. None	A	

Inspected By		
Dylan Price <i>(Print Name)</i>	<i>Dylan Price</i> <i>(Signature)</i>	08/14/2024 <i>(Date)</i>

Reviewed By Post-Closure Manager		
Brian Hanshew <i>(Print Name)</i>	<i>Brian Hanshew</i> <i>(Signature)</i>	9/9/2024 <i>(Date)</i>

MAP OF OLD F-AREA SEEPAGE BASIN (904-49G)



NOTES: None
