

**Minor
OPERATION AND MAINTENANCE
Activity Plan**

**Installation of WSB Parking Lot Access Road
Site Evaluation Area 276**

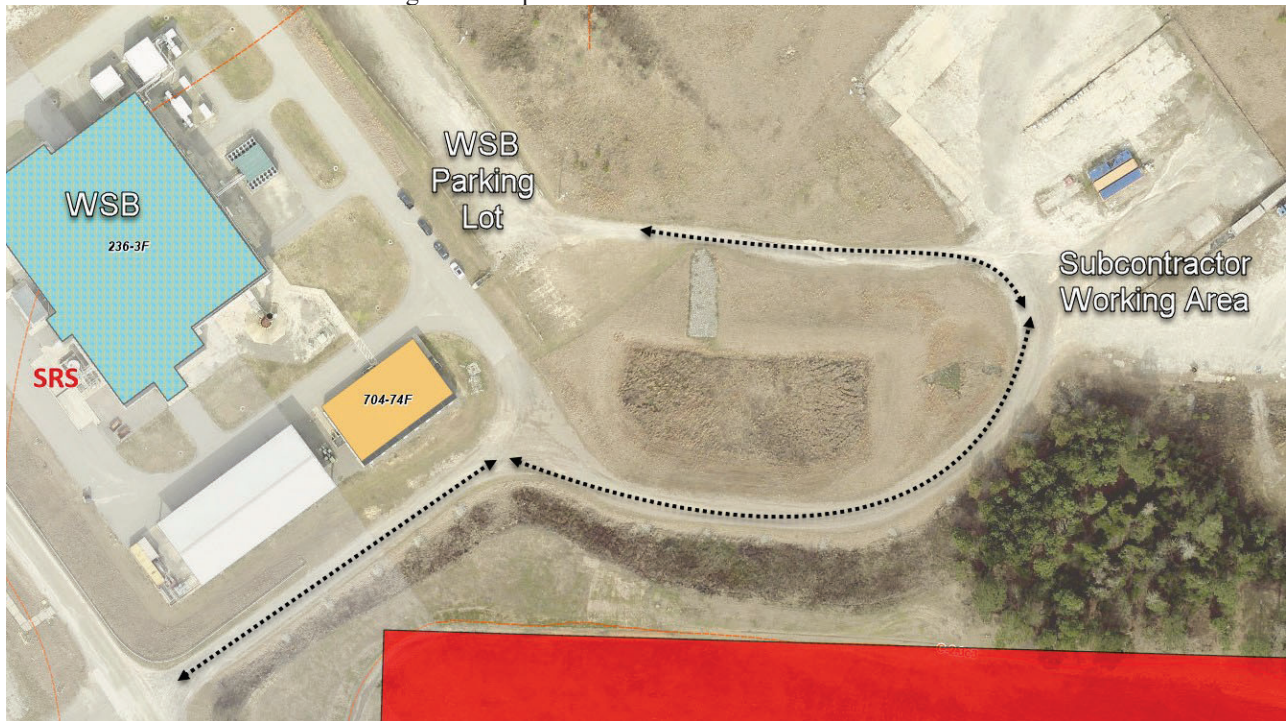
| | | |
|---|--|--------|
| Prepared by: <u>CASSANDRA MCNEACE (Affiliate)</u> | Digitally signed by CASSANDRA MCNEACE (Affiliate) Date: 2025.08.06 09:46:45 -04'00' | 8/6/25 |
| <i>Cassandra McNeace, Environmental Compliance Authority, SRPPF</i> | | Date |
| Approved by: <u>EVAN CROY (Affiliate)</u> | Digitally signed by EVAN CROY (Affiliate) Date: 2025.08.06 11:39:23 -04'00' | 8/6/25 |
| <i>Evan Croy, Radiological Protection, SRPPF</i> | | Date |
| Approved by: <u>WILLIAM KWIATKOWSKI (Affiliate)</u> | Digitally signed by WILLIAM KWIATKOWSKI (Affiliate) Date: 2025.08.06 13:40:26 -04'00' | 8/6/25 |
| <i>William Kwiatkowski, PPOP Operations, WSB</i> | | Date |

1. INTRODUCTION

This Operation and Maintenance (O&M) Plan for installing the Weapons Support Building (WSB) parking lot access road will provide a means by which soil/media disturbance can commence within 200 feet of Site Evaluation Area (SEA) 276 while protecting human health and the environment and minimizing impacts to long term characterization and remediation efforts.

The current access road into the WSB parking lot goes past an area where subcontractors are working with large equipment (see figure 1 below). The traffic from the subcontractors in the area and personnel working in the WSB often hinder each other's ingress/egress.

Figure 1. Map of current road into the WSB



To separate the traffic from WSB personnel and subcontractors, a new roadway will be installed, connecting the entrance to the WSB directly to the WSB parking lot. See planned area of disturbance below

Figure 2. Map of Planned Area of Disturbance



This O&M Plan is characterized as “minor intrusive” because less than 10 percent of the Site Evaluation Area (SEA) will be disturbed.

2. AREA DESCRIPTION AND CONDITIONS

The planned disturbance is within 200 feet of the F-Area Ash Basin (SEA 276, 288-0F). The F-Area Ash Basin historically received sluiced water/ash from the 284-F powerhouse, which ceased operation in the 1980s. As ash settled, it was allowed to dry and then removed from the basin and placed around the perimeter to make room for more wet ash. The 284-F powerhouse was shut down and the 784-A powerhouse continued to dispose of dry coal ash in the ash basin. The basin has the primary contaminants of toxic metals. Safety and health concerns are primarily from personnel exposure to toxic metals.

3. O&M ACTIVITY

A. O&M Activity Description

The planned soil disturbing activity in the buffer zone of SEA 276 involves minor disturbance to install a new roadway. Activities include clearing and grubbing, topsoil removal, vegetation removal, excavation and leveling of ground, and placement of dirt and crusher

run. A depth of 6 inches will be disturbed in order to remove grass and roots.

This activity is expected to begin in August 2025 and complete by October 2025. If this work scope requires significant change for any reason, the SRNS On-Scene Coordinator (OSC) will be contacted to determine if modifications to this O&M Plan are required.

B. O&M Activity Sampling and Monitoring for Health and Safety

Radiological Protection (RP) will monitor the water and/or soil removal activities for radioactive contamination per their standard procedures. If radiological contamination is encountered, RP will determine if protective equipment and personnel access restrictions are required.

The work area will be barricaded with rope or rigid handrail to ensure that access is controlled. This is due to personnel safety around the work area.

Worker health and safety will be described and controlled, as required, in the work package, and the Assisted Hazards Analysis (AHA).

C. Health and Safety Plan

The health and safety concern for this O & M Plan primarily involves worker exposure to metal contamination. RP shall be available for any questions or oversight requested during the land disturbance process.

The Work Order and/or AHA for these activities will contain instructions to comply with this plan.

The safety requirements and personal protective equipment described in these documents is appropriate for the potential hazards of the waste units

D. Characterization and Sampling Plan for the Affected Area within SEA 105

No characterization or sampling plan will be required.

E. Contaminated Materials Management and/or Disposal

If all SEA soil/media are determined to be “clean” by RP, normal waste disposal practices may be applied, as determined by SRPPF ECA. If soil/media are determined to be contaminated, contact SRPPF ECA for further guidance.

F. Environmental Plans and Permit Modification Requests

The soil disturbing aspect of this task is not expected to involve environmental plans/permits or other required maintenance and inspections.

The Site Use/Site Clearance Permit process has been completed for this activity.

4. CONTINGENCY PLAN

If at any time during the implementation of the activity, the conditions change, such that the activity is no longer considered “minor” (is greater than 10% of a waste unit area impacted or disturbed) or any other unanticipated event occurs, the Facility Operations Manager or the ECA shall:

- Immediately notify the SRNS-OSC. The SRNS-OSC will notify the DOE-OSC.
- Contain and stabilize the area, investigate as necessary to determine the necessary change in the activity plan, secure the area and stop work.
- Update the SRNS-OSC as to the findings and the requested path forward. The SRNS-OSC will communicate the information to the DOE-OSC and obtain concurrence on the path forward.

5. DOCUMENTATION & REPORTING

The SRPPF ECA will transmit the following close-out documentation to the SRNS-OSC by the 20th day of the month following the month that the land disturbing activity was completed:

- the signed O&M Plan,
- any sampling and characterization data collected,
- quantity of contaminated materials generated, and
- treatment, storage, and disposal location of contaminated material.

References

WSRC-RP-96-45, Savannah River Site Plan for Performing Maintenance in Federal Facility Agreement Area (O&M) Plan (U), December 15, 1996.

WSRC-OS-94-42, Federal Facility Agreement for the Savannah River Site, August 16, 1993.